

NYBORG – MAWENT

WEATHER LOUVERS

1. APPLICATION

Weather louvers are designed and prepared for use in marine as well as off-shore conditions. The main purpose is operation at inlets and outlets of HVAC systems. Many variations give possibility to use in special applications such as spark-proof or sanitary conditions.

The louver is used where weather tight closing is not needed, primarily for exhaust, but also for supply if some ingress of rain is acceptable. The **SSVENT** is mainly used as shut off damper, but can also be used as a regulating damper for air volume control.

2. CONSTRUCTION

SR-F/SR-G is a single stage weather louver designed to protect the ventilation duct from rain and light sea spray. The louver is primarily used as exhaust louver where weather tight closing is not needed, but it can also be used for supply where some ingress of water is acceptable. **SR-F** is a louver with flange. **SR-G** is a louver without flange, it must be welded to bulkhead.

SRL-F/SRL-G is a single stage weather louver designed to protect the ventilation duct from rain and light sea spray. The louver is primarily used as exhaust louver where weather tight closing is not needed, but it can also be used for supply where some ingress of water is acceptable. **SRL-F** is a louver with flange. **SRL-G** is a louver without flange, it must be welded to bulkhead. This louver includes hinged watertight door (opening left, right, top, bottom to be selected) equipped with heavy duty neoprene gasket. The largest recommended size of the louver with hatch is approx. 3-3,5 m², for bigger sizes the hatch should be divided in two pieces.

SSVENT is heavy duty, rectangular, parallel louver and can be used for the control of the amount of flowing air using the blades or as cutting-off throttle. Throttle blades and blades' rotation shafts are made of **AISI 316L** or **AISI304**. The position of throttle's blades can be controlled manually, automatically, electrically or with compressed air.

SSVENT is a louver with flange.

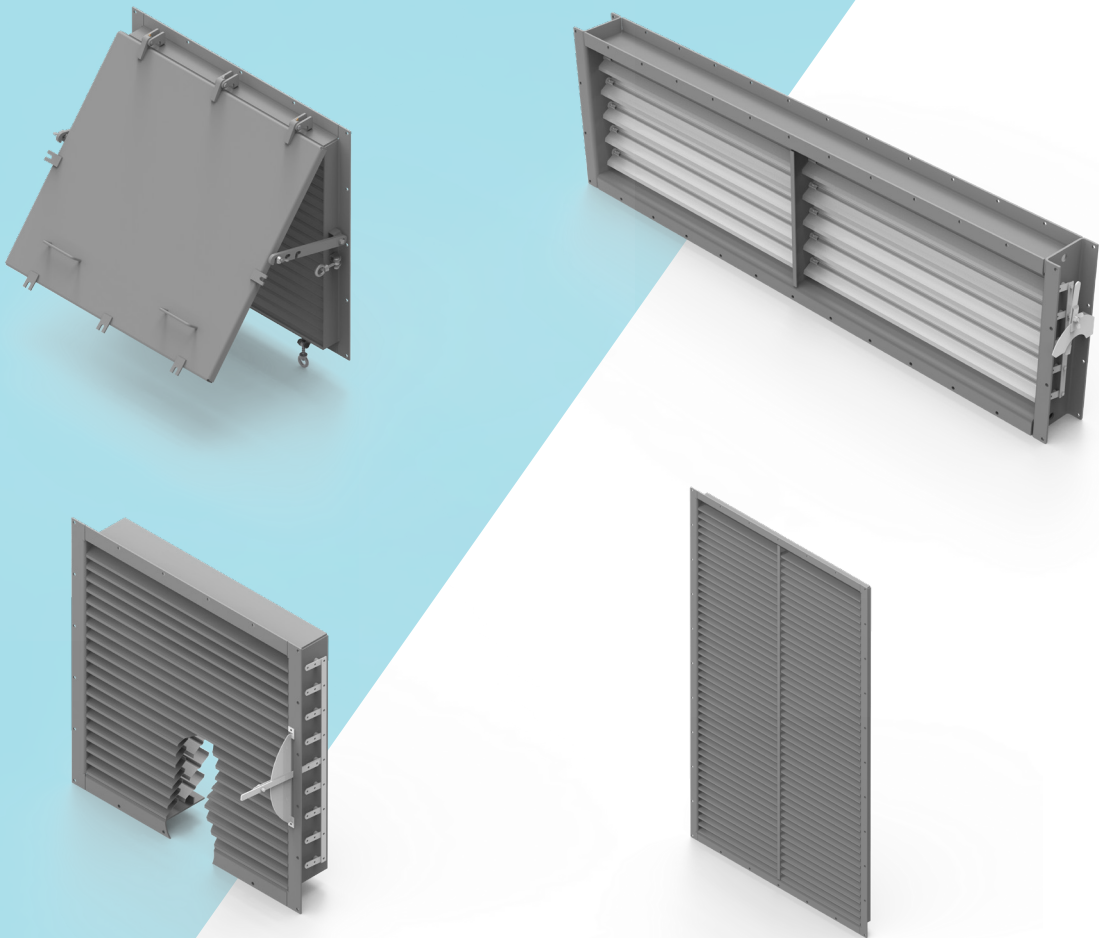
SSVENT FS is a combined rectangular single stage weather louver with an integrated closing damper. Throttle blades and blades' rotation shafts are made of **AISI 316L** or **AISI304**. In front part, the throttle is equipped with fixed single blades (louver). The position of throttle's blades can be controlled manually, automatically, electrically or with compressed air. **SSVENT FS** is a louver with flange.

Drilling of flanges to be selected:

- Nyborg-Mawent standard (as on drawings),
- according to ISO 15138.

Special drilling is available on request.

For Anti-spark execution earthing bolt is added as well as selection of materials is considered. This execution must be agreed with the factory prior to production.



Options, optional accessories:

- wire mesh (standard 12x12) made of HDG steel, stainless steel AISI 304/316L,
- counter flange,
- sand filter in front thk.20mm bolted to the flange,
- filter,
- locking items to be welded to the bulkhead/deck to keep louver in open position (delivered loose),
- locking arm to keep louver in open position normally up to 45° (value to be agreed with the factory),
- special shape design (e.g. triangular, equipped with hatch).

3. SURFACE TREATMENT

SR-F, SR-G, SRL-F, SRL-G:

Standard treatment is carbon steel hot dip galvanized.

Optional treatment:

- carbon steel marine painted,
- stainless steel including AISI 304/316L - acid treated,
- sea water resistant aluminium alloy - acid treated.

SSVENT, SSVENT-FS:

Standard treatment is hot dip galvanized carbon steel . Blades and rotation shafts are made of AISI 304/316L.

Optional treatment:

- carbon steel marine painted,
- stainless steel including AISI 304/316L - acid treated,
- sea water resistant aluminium alloy - acid treated.

4. OPERATING CONDITIONS

Recommended face air velocity is:

Supply: $v = 5,5 \text{ m/s}$

Exhaust: $v = 6-6,5 \text{ m/s}$

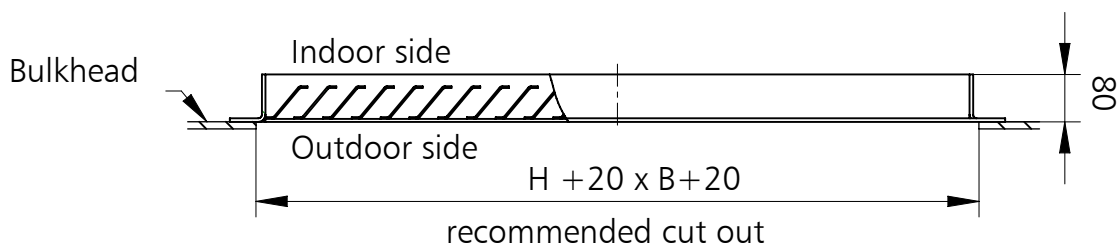
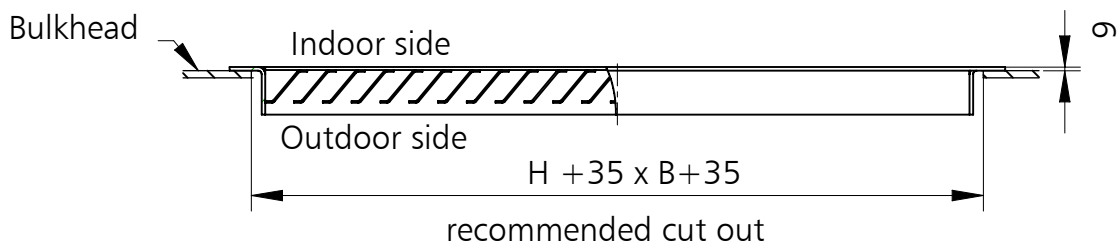
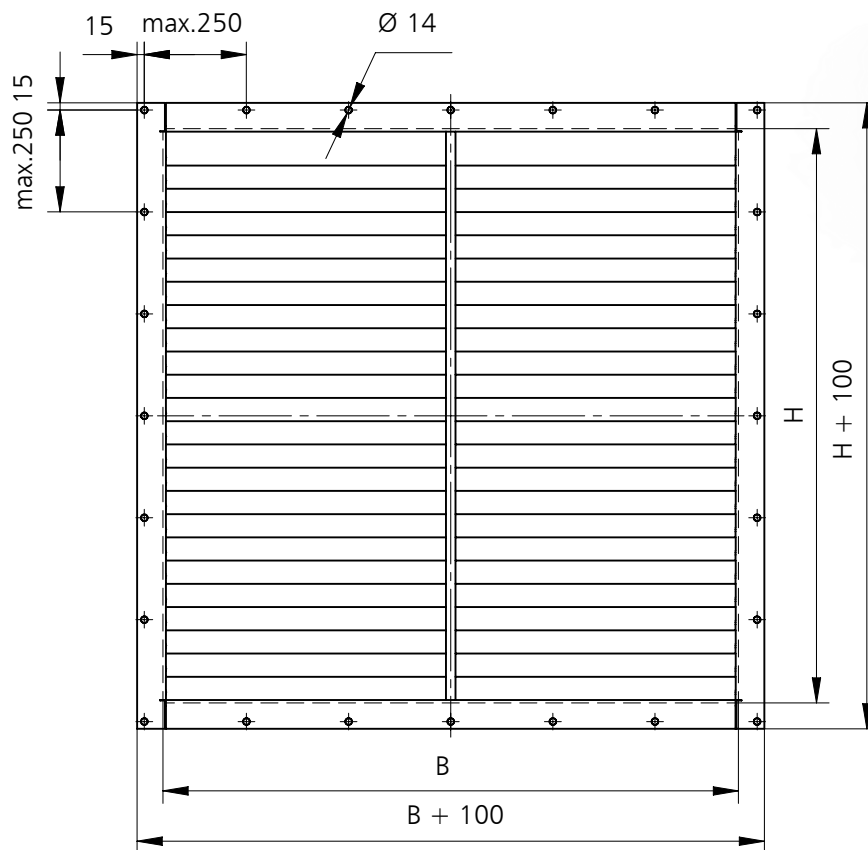
5. SIZES

Louvers are made in customer's dimensions (BxH) according to sample drawings presented in this catalogue. However each size will be considered by the factory and produced with proper reinforcement.

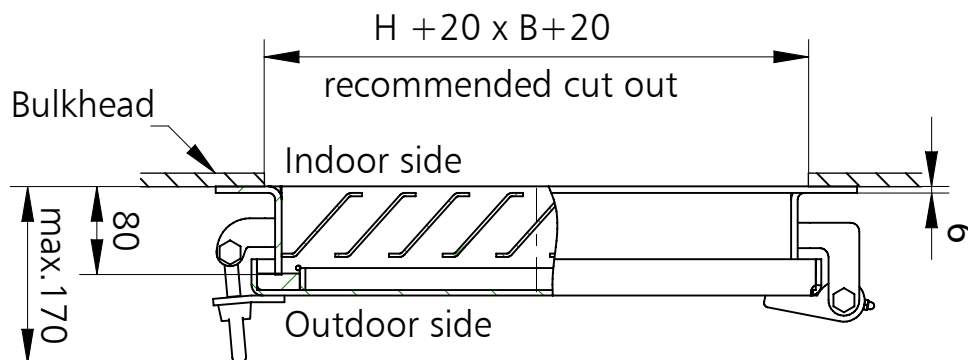
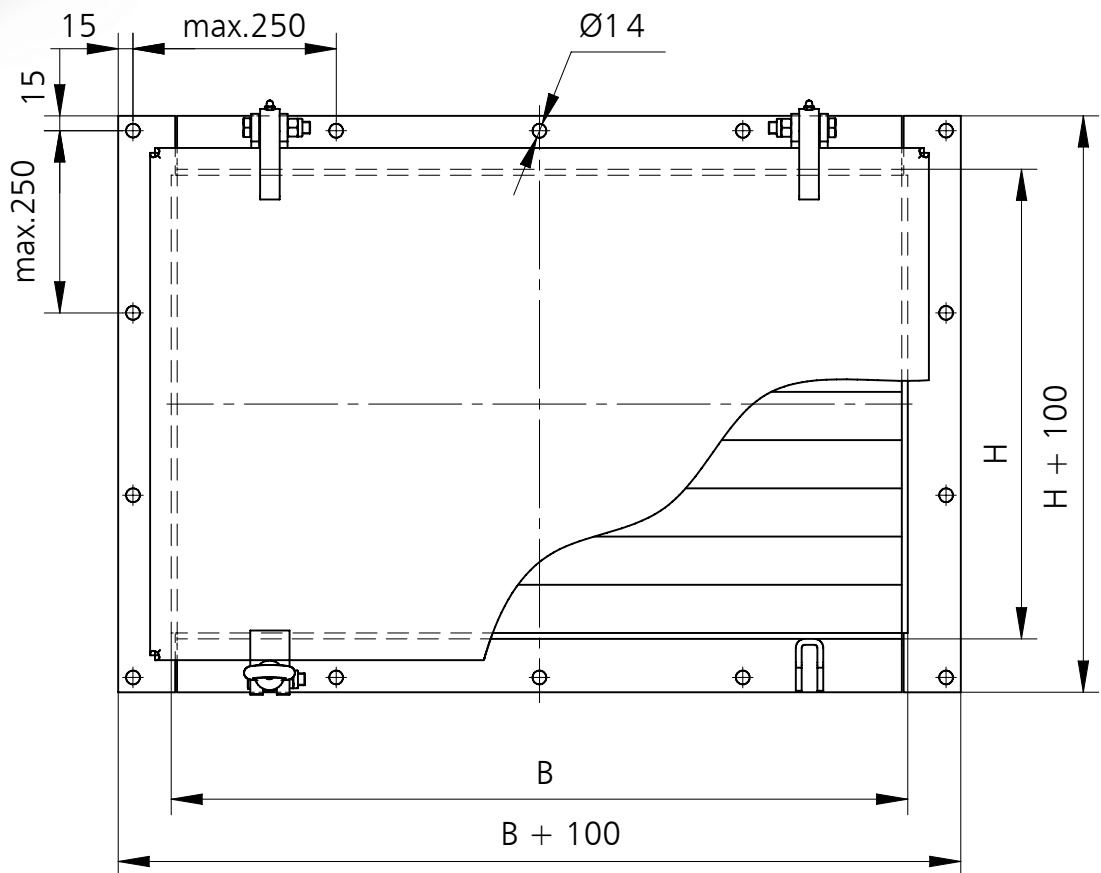
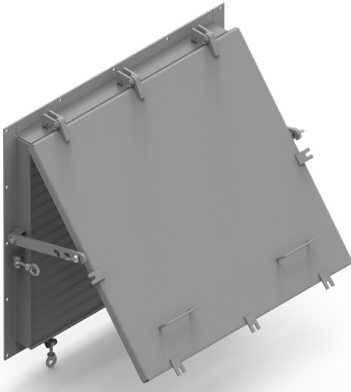
Notice that nominal dimensions BxH are external dimensions of louver casing.

Notice if louver penetrates bulkhead, radius of cut out must be considered as conflict may occur.

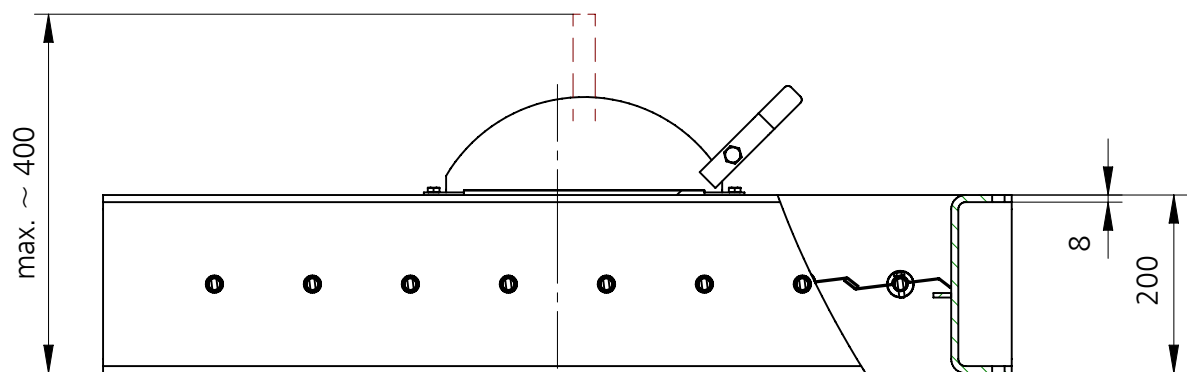
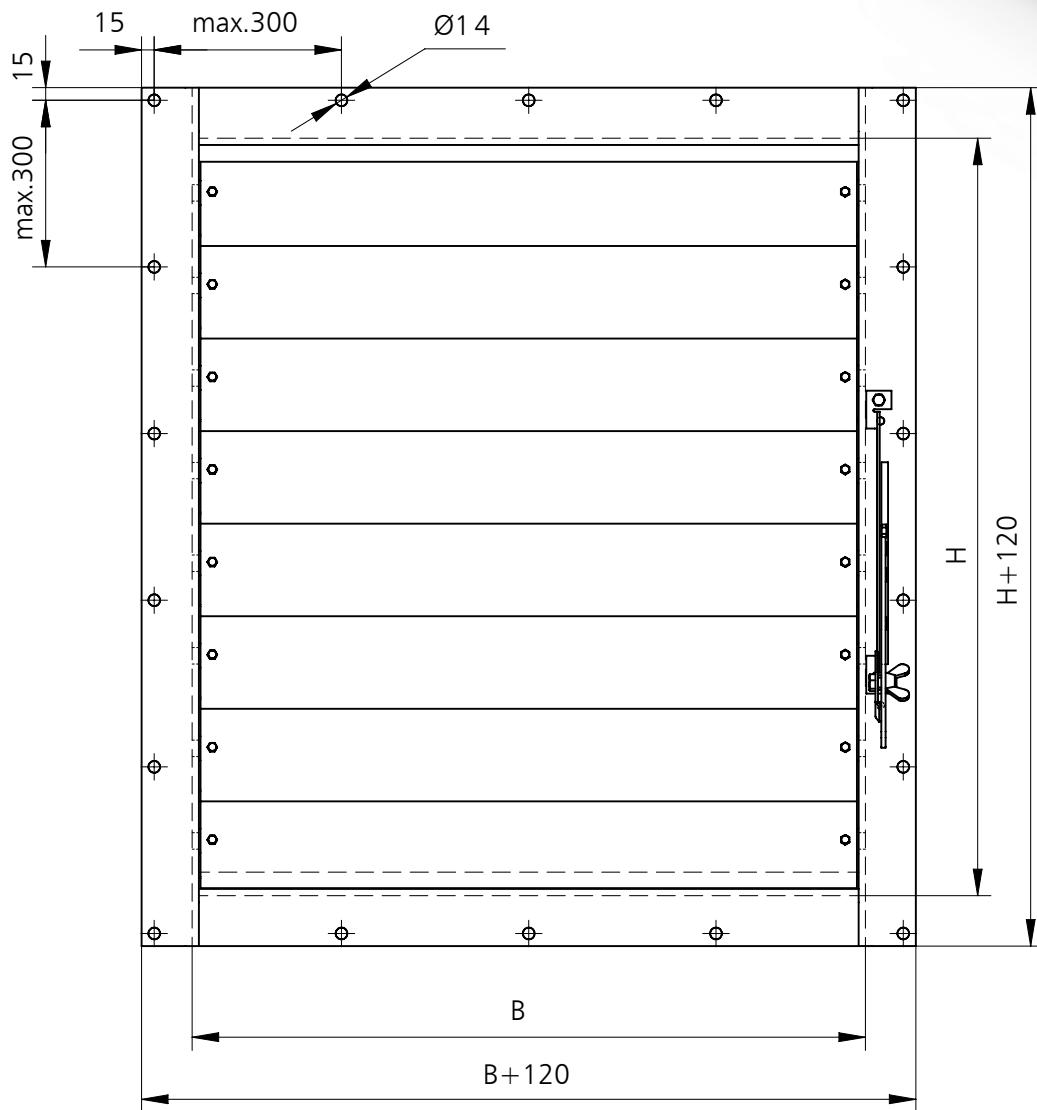
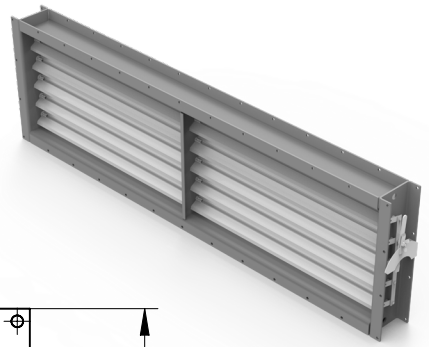
SR-F dimensions



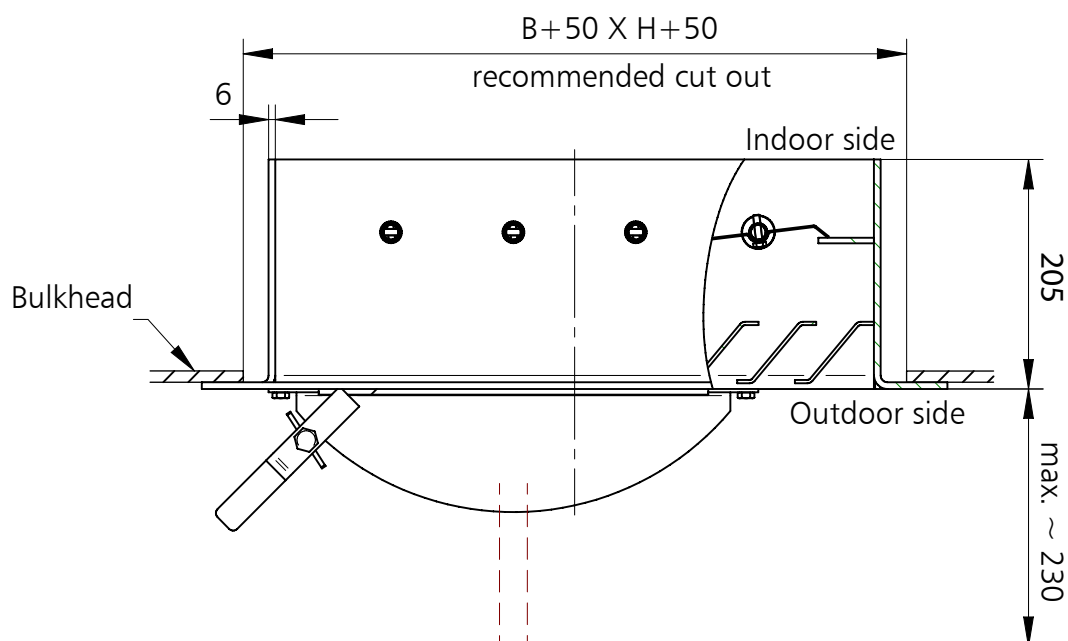
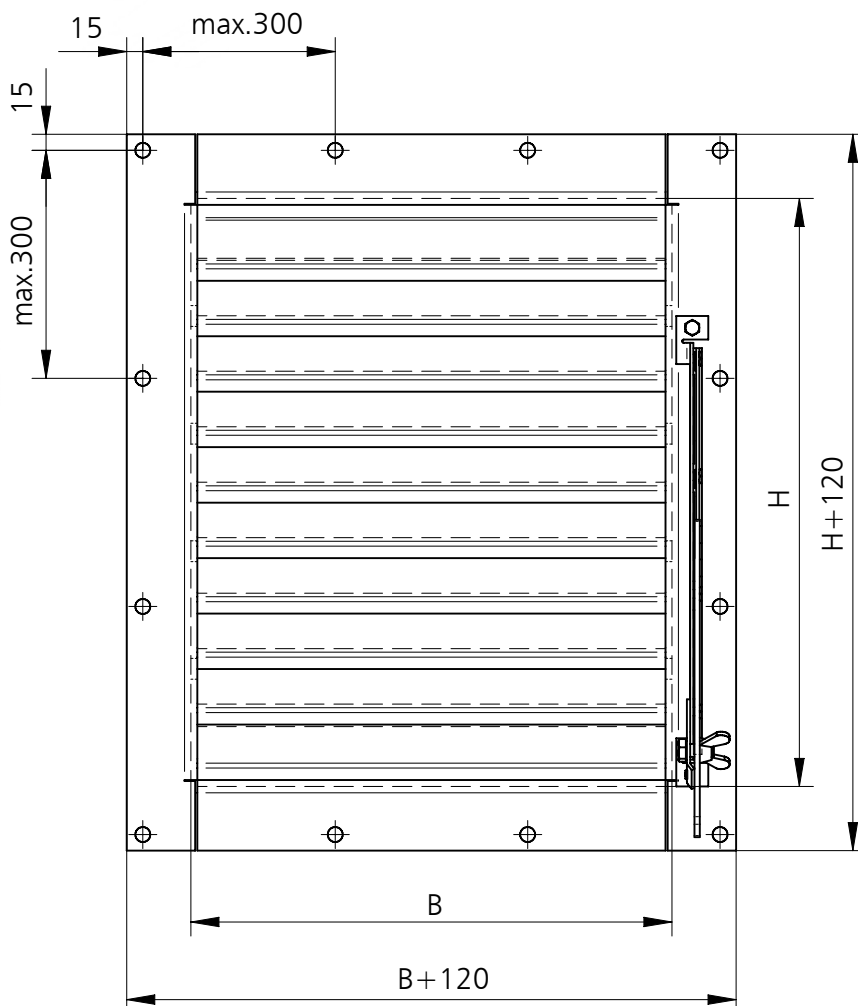
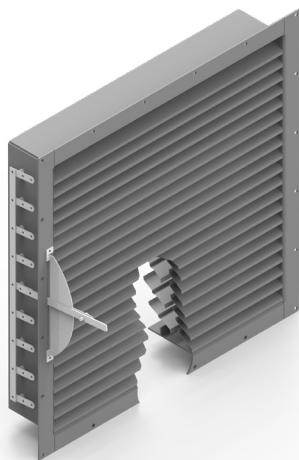
SRL-F dimensions



SSVENT Dimensions



SSVENT-FS Dimensions



6. MARKING

An example of marking for for louver, size:

- **SRL-F 700x700 (BxH)** open to the left, made of hot dip galvanized carbon steel, drilling acc. to ISO 15138.

Nyborg-Mawent S.A.

Ciepła Street 6, 82-200 Malbork, POLAND

T +48 55 646 63 00

F +48 55 646 63 09

office@nyborg-mawent.com

www.nyborg-mawent.com

