



# NYBORG – MAWENT

## VENTILATION HOODS

# 1. APPLICATION

**Ventilation hoods** are destined for installation in ventilation systems at ships or offshore objects. The cowls are used for protection against seawater spray and rain. Some hoods have closing device. They are designed for installation on open decks for supply and exhaust of air.

# 2. CONSTRUCTION

**Guide of Nyborg-Mawent ventilation hoods:**

**KH-R10** is a ventilation cowl for protection against seawater spray and rain.

**KH-R1F** is a fixed ventilation cowl.

**KHE-R1F** is a jet cowl for upward discharge of exhaust air.

**KHR** is a shutable ventilation cowl for protection of incoming seas and spray, and total weather tight design. Cowl to be upturned for easy maintenance and inspection.

**KHS** is a shutable ventilation cowl for protection of incoming seas and spray, and total weather tight design. Cowl to be upturned for easy maintenance and inspection.

**B1K** is a shutable ventilation cowl for protection of incoming seas and spray, and total weather tight design. Cowl to be upturned for easy maintenance and inspection.

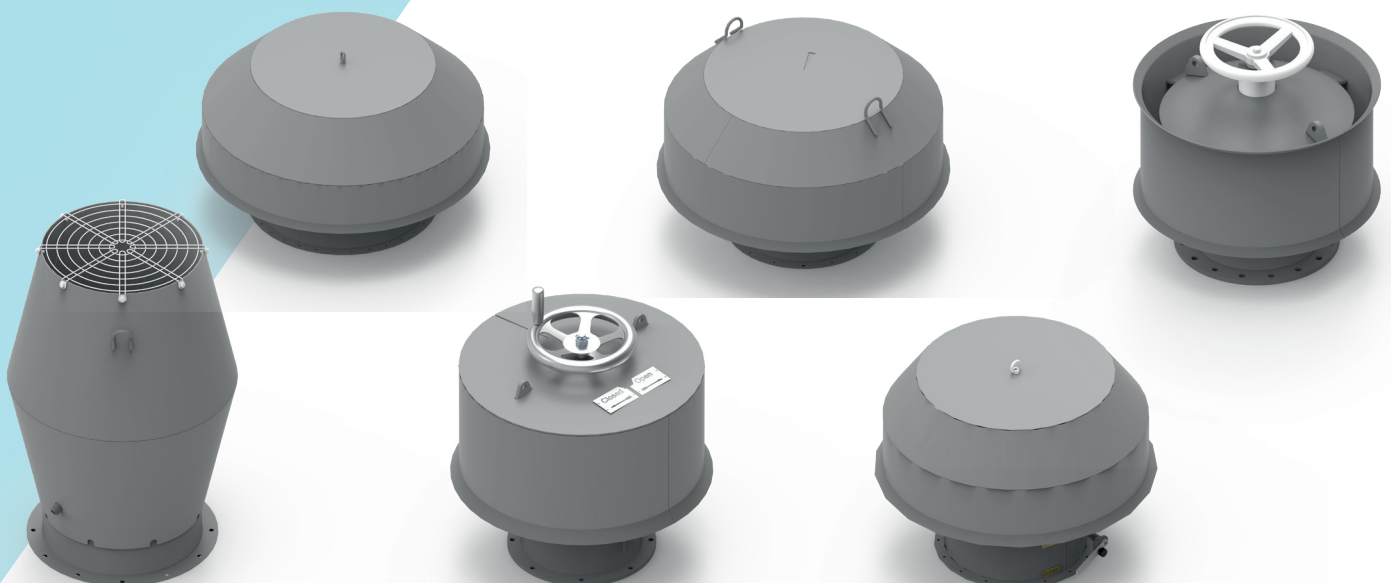
**Drilling of flanges in the ventilation hoods to be selected:**

- Nyborg-Mawent standard,
- according to ISO 15138.

Special drilling is available on request.

**Options, optional accessories for ventilation hoods:**

- wire mesh made of HDG steel, stainless steel AISI 304/316L.



# 3. SURFACE TREATMENT

KH-R10, KH-R1F, KHE-R1F, KHR, KHS, B1K:

Standard treatment for casing is hot dip galvanized. All fasteners are made of stainless steel.

Optional treatment:

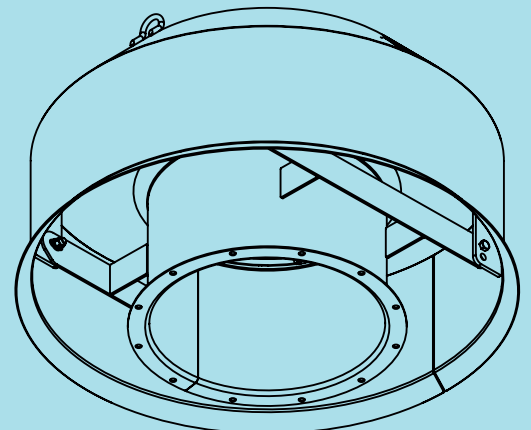
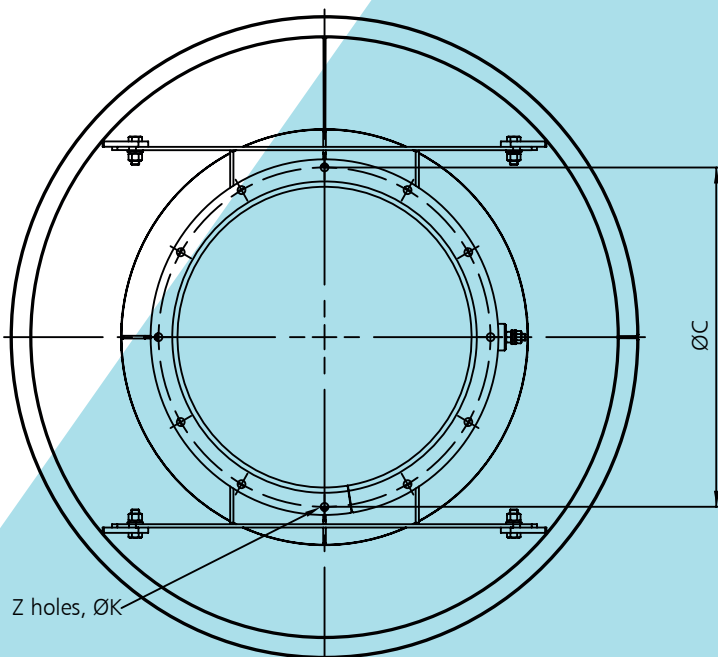
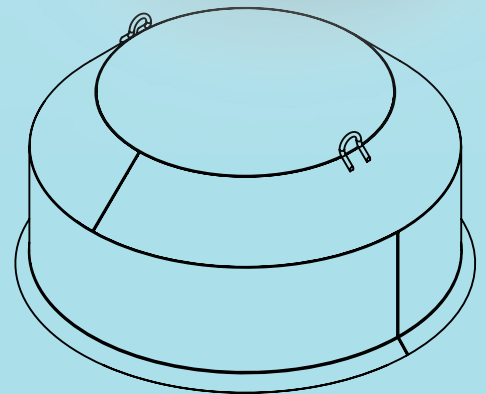
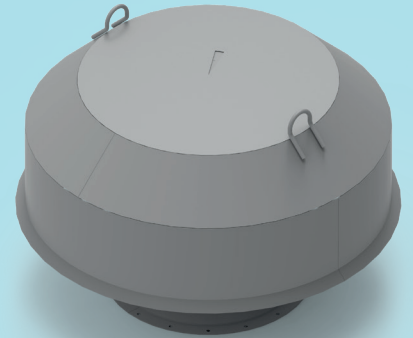
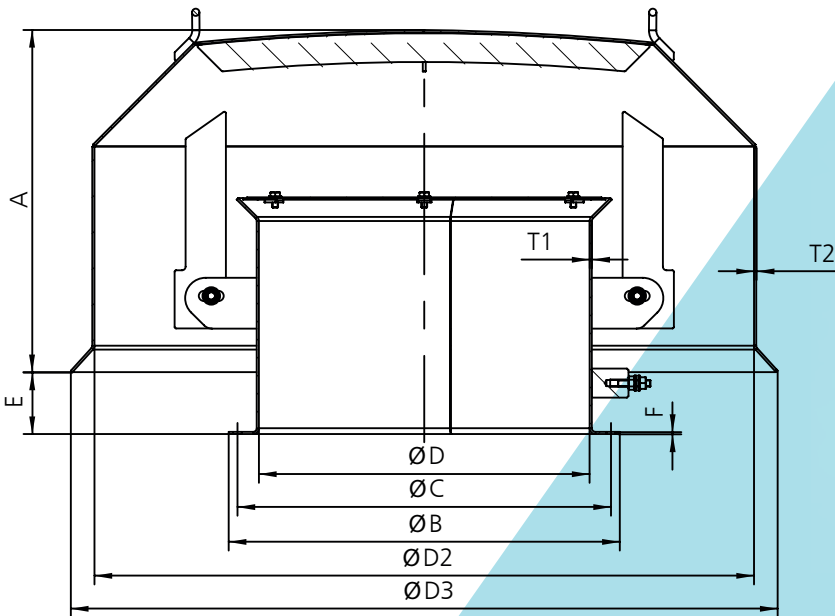
- Casing: stainless steel including AISI 304/316L and sea water resistant aluminium - acid treated.

# 4. SIZES

Basic types of ventilation hoods.

Nominal diameters (inner) is according to table below.

# KH-R10

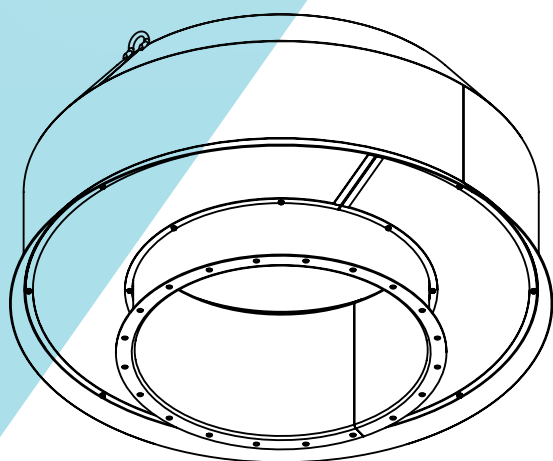
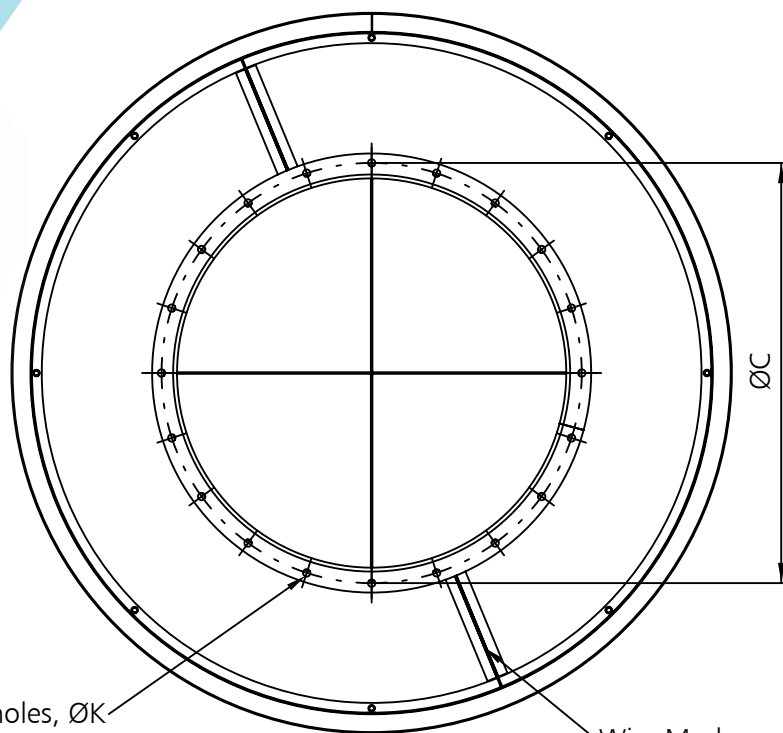
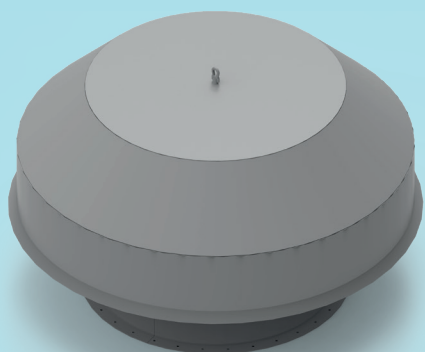


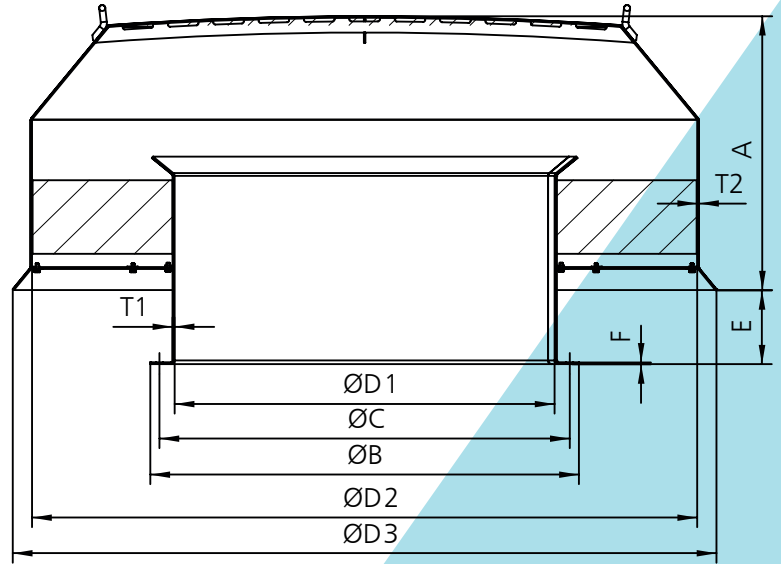
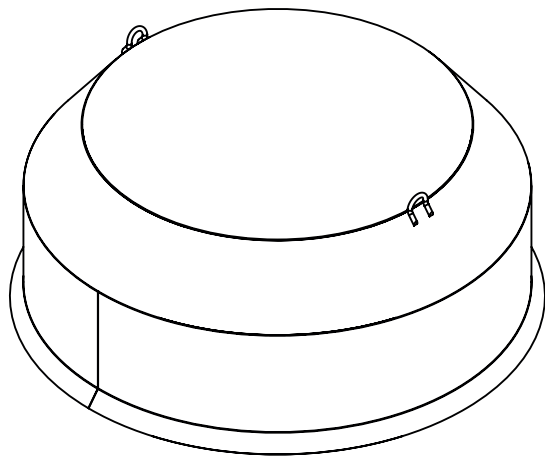
## KH - R10

Size	A [mm]	B* [mm]	C* [mm]	ØD1 [mm]	ØD2 [mm]	ØD3 [mm]	E [mm]	F/T1 [mm]	T2 [mm]	Z x K [pcs x mm]	Weight [kg]
250	305	344	310	250	650	700	75	3	2	8x12	~38
315	305	400	360	315	650	700	75	3	2	8x14	~39
355	305	440	405	355	650	700	75	3	2	8x14	~39
400	470	484	460	400	900	960	85	3	3	12x14	~68
450	470	534	510	450	900	960	85	3	3	12x14	~68
500	470	584	560	500	900	960	85	3	3	12x14	~68
630	550	733	698	630	1300	1380	115	4	3	16x14	~125
710	550	816	775	710	1300	1380	115	4	3	16x14	~130
800	650	906	870	800	1650	1740	200	4	4	16x19	~247
900	650	1028	980	900	1650	1740	200	5	4	16x19	~265
1000	870	1128	1080	1000	1850	1940	130	5	4	20x19	~318

\* standard Nyborg-Mawent drilling, other available on request

# KH-R1F



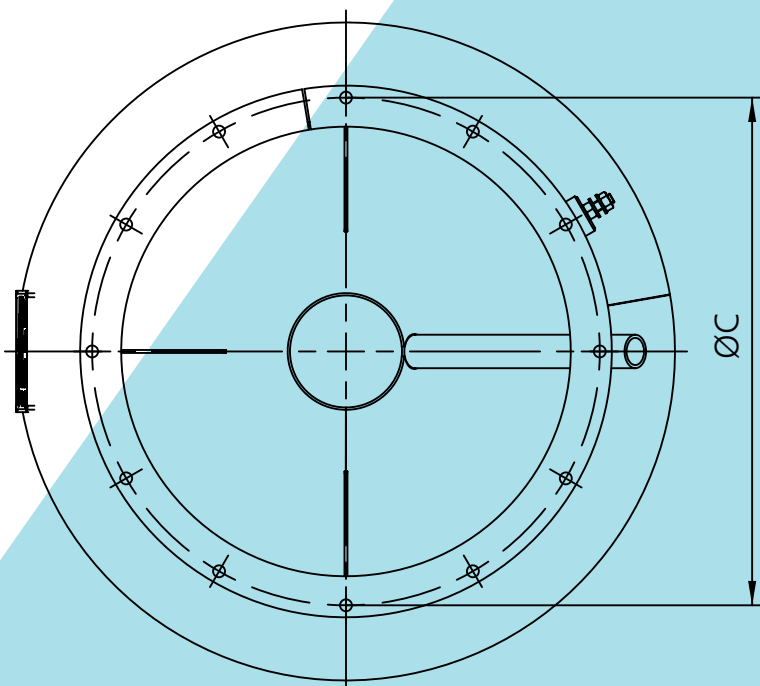


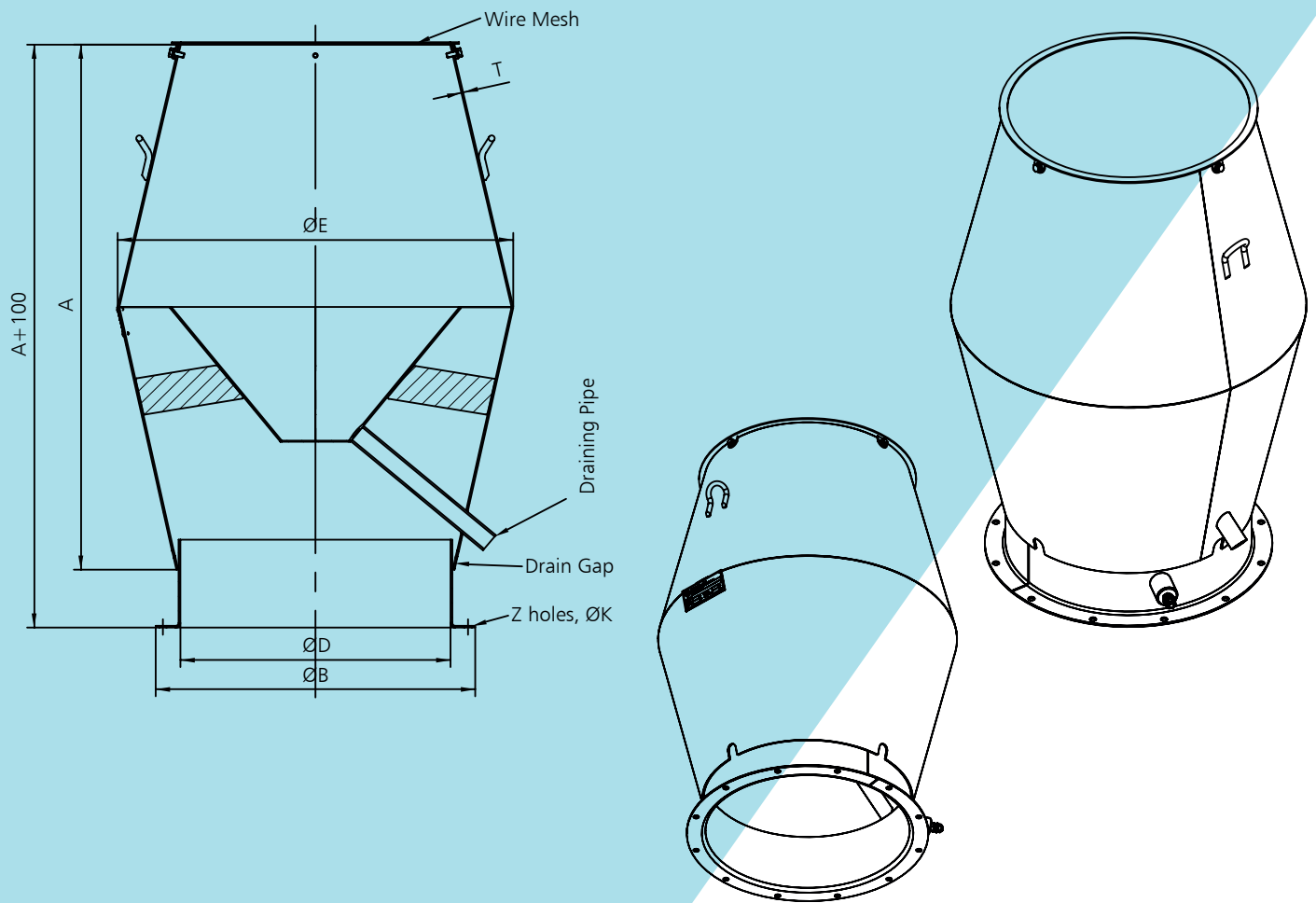
## KH - R1F

Size	A [mm]	B* [mm]	C* [mm]	ØD1 [mm]	ØD2 [mm]	ØD3 [mm]	E [mm]	F/T1 [mm]	T2 [mm]	Z x K [pcs x mm]	Weight [kg]
1000	740	1128	1080	1000	1750	1850	200	5	4	20x19	~266
1100	760	1228	1200	1120	1850	1950	200	5	4	20x19	~340
1120	760	1228	1200	1120	1850	1950	200	5	4	20x19	~342
1250	770	1380	1320	1250	2050	2150	250	6	5	24x14	~650
1400	900	1530	1490	1400	2400	2510	250	6	5	32x19	~780

\* standard Nyborg-Mawent drilling, other available on request

# KHE-R1F



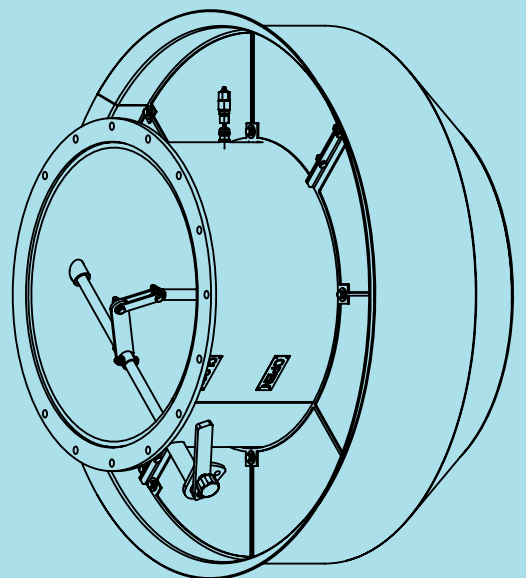
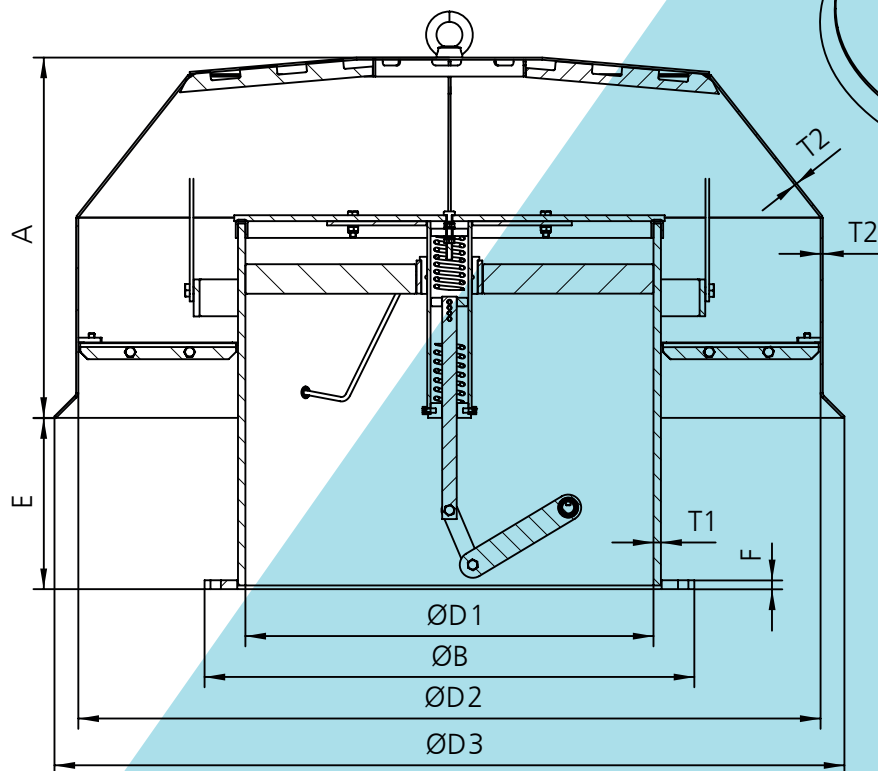
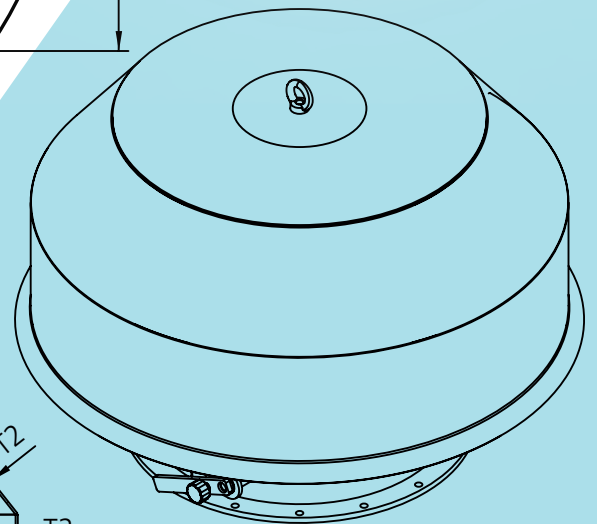
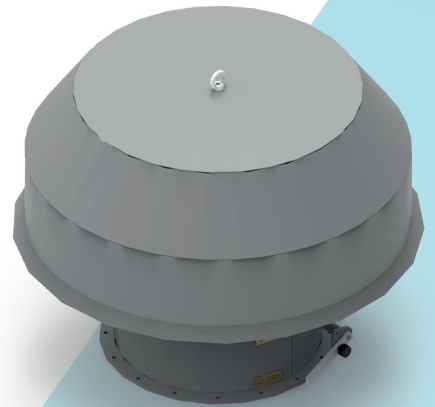
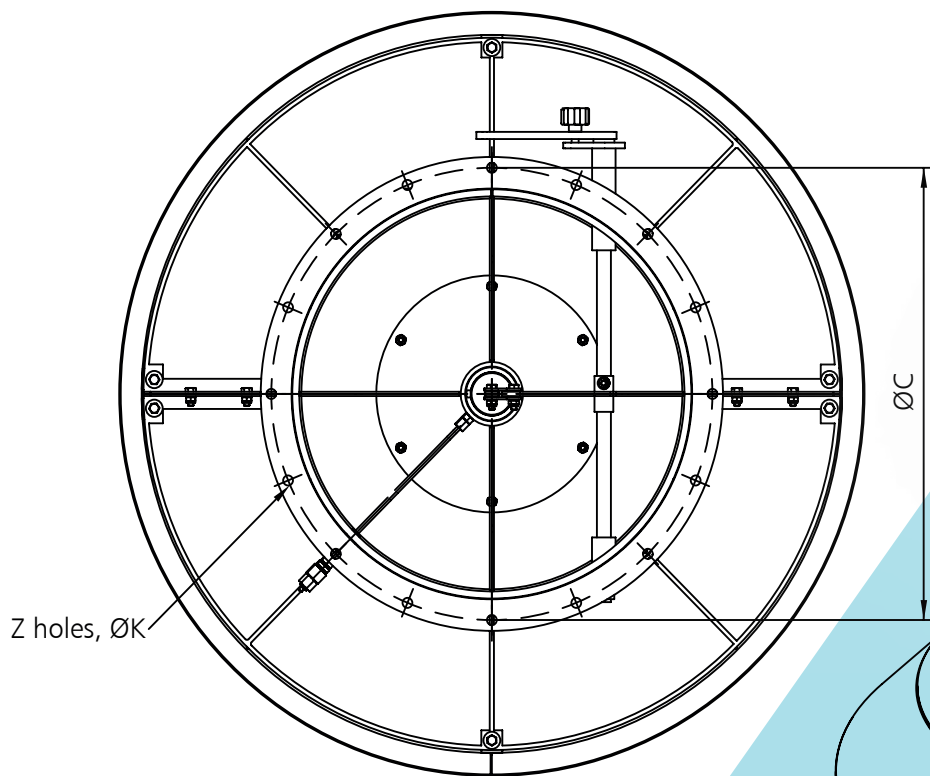


## KHE - R1F

Size	A [mm]	B* [mm]	C* [mm]	D [mm]	E [mm]	T [mm]	Z x K [pcs x mm]	Weight [kg]
200	405	290	260	200	405	3	8x12	~17
250	410	334	310	250	405	3	8x12	~20
315	550	384	360	315	470	3	8x14	~27
355	770	434	405	355	520	3	8x14	~28
400	820	484	460	400	575	3	12x14	~47
450	890	534	510	450	660	3	12x14	~57
500	980	584	560	500	730	3	12x14	~70
600	1180	697	660	600	900	3	12x14	~100
630	1220	736	698	630	930	3	16x14	~120
710	1380	806	775	710	1045	3	16x14	~140
800	1530	906	870	800	1155	3	16x19	~161
900	1700	1028	980	900	1305	3	16x19	~197
1000	1880	1128	1080	1000	1455	3	20x19	~238
1120	2060	1248	1200	1120	1640	4	20x19	~385
1250	2260	1380	1320	1250	1850	4	24x14	~472

\* standard Nyborg-Mawent drilling, other available on request

# KHS-R10V

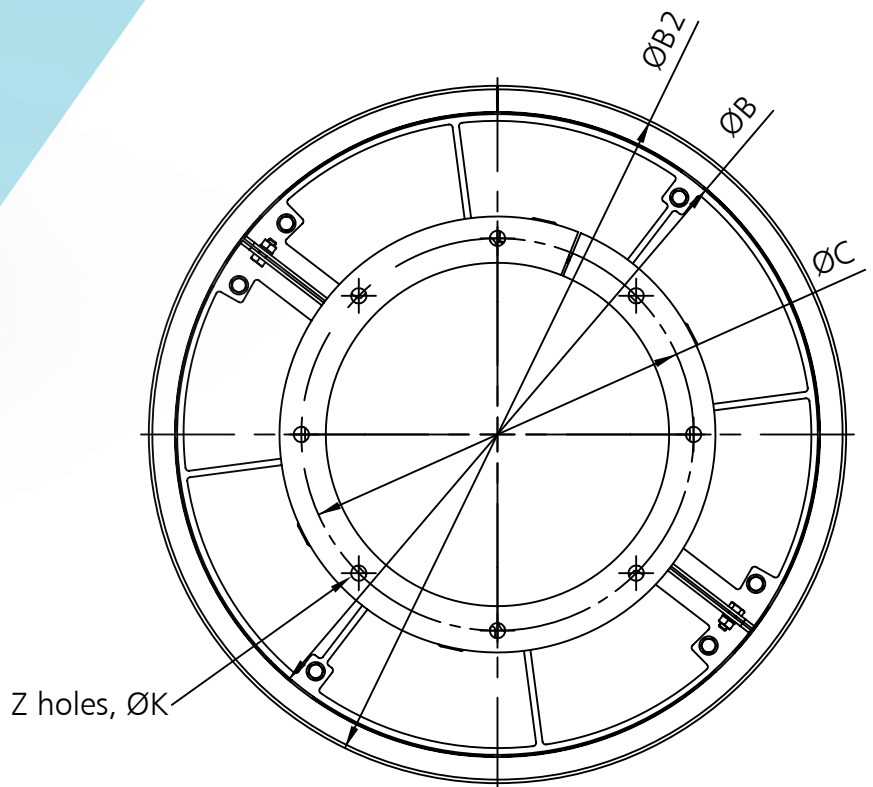
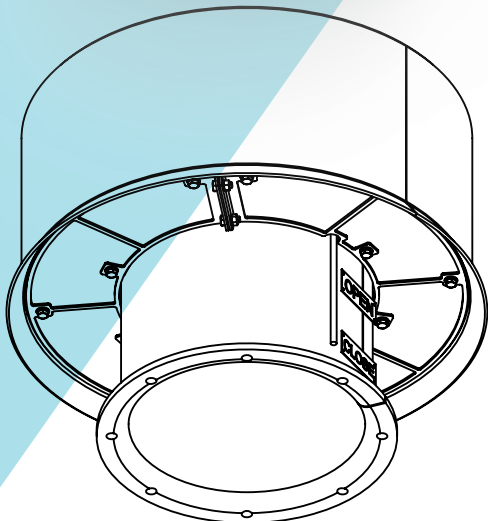
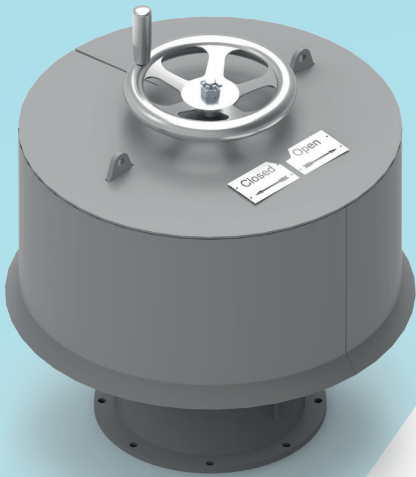


## KHS - R10V

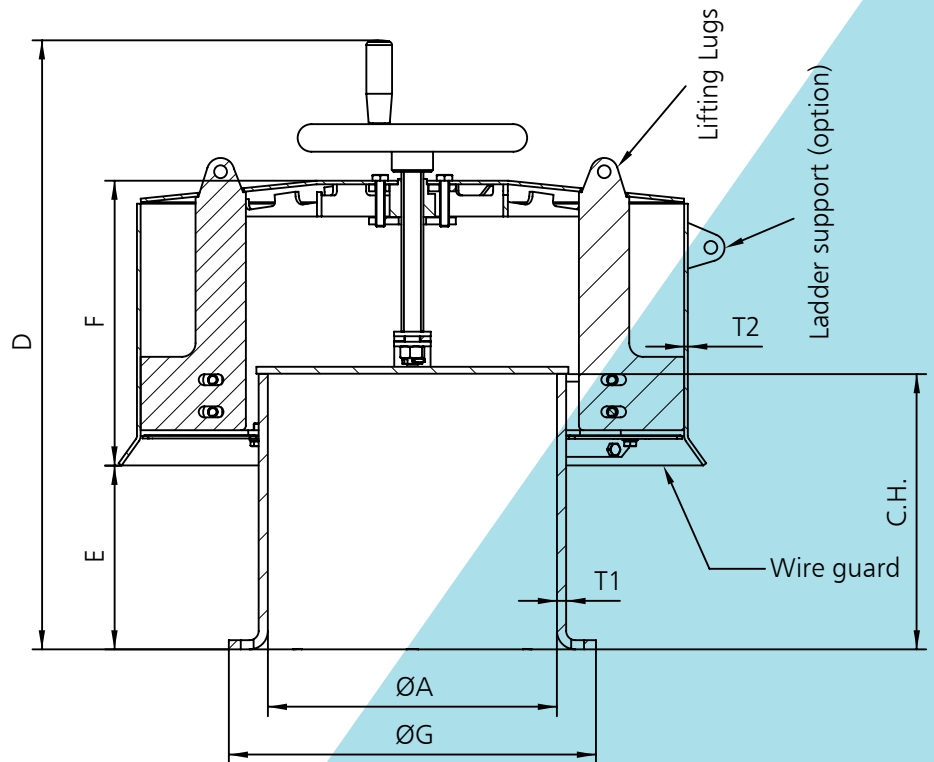
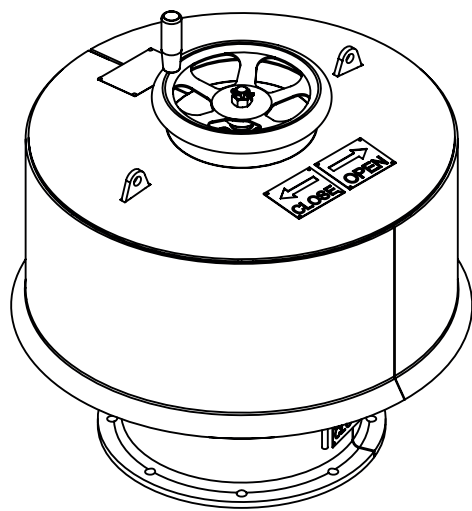
Size	A [mm]	B* [mm]	C* [mm]	ØD1 [mm]	ØD2 [mm]	ØD3 [mm]	E [mm]	F [mm]	T1 [mm]	T2 [mm]	Z x K [pcs x mm]	Weight [kg]
250	290	329	292	251	550	590	140	8	8 (10)	2	8x12	~42
300	305	387	360	304	600	640	140	10	10	3	8x14	~56
350	305	437	405	530	650	700	140	10	10	3	8x14	~68
400	320	488	460	400	750	800	180	10	10	3	12x14	~85
450	360	550	510	450	800	850	190	12	10	3	12x14	~110
500	420	600	560	500	900	950	200	12	10	3	12x14	~130
550	486	660	630	550	1000	1060	230	12	10	3	16x14	~152
630	520	740	698	630	1200	1280	230	12	10	3	16x14	~190
700	555	810	775	700	1300	1375	240	12	10	3	16x14	~215
800	600	912	870	800	1500	1600	430	12	10	3	16x19	~260

\* standard Nyborg-Mawent drilling, other available on request

# KHR





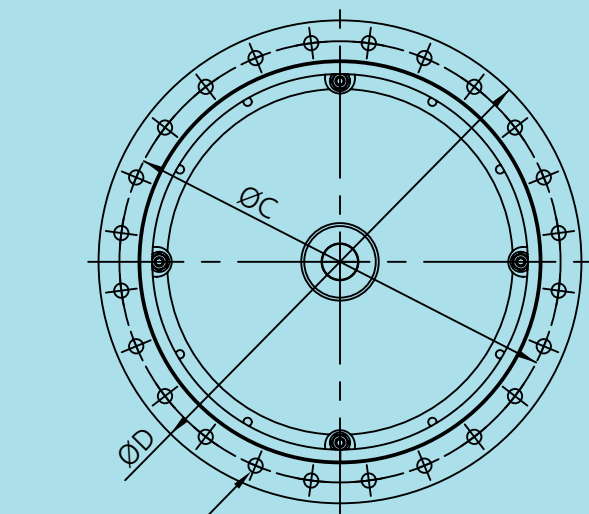


## KHR

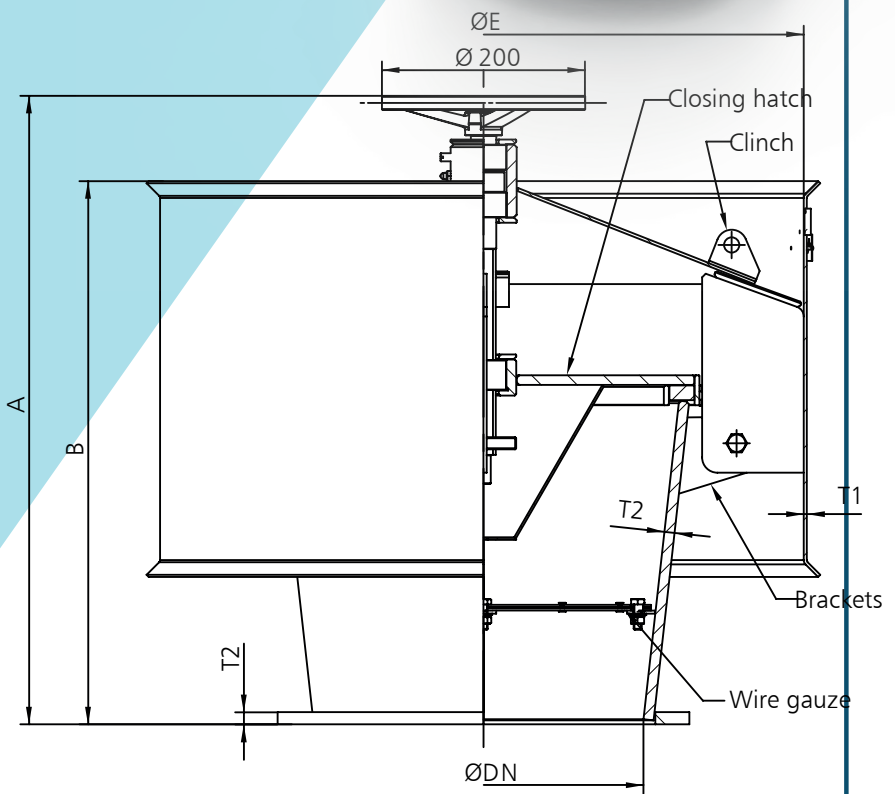
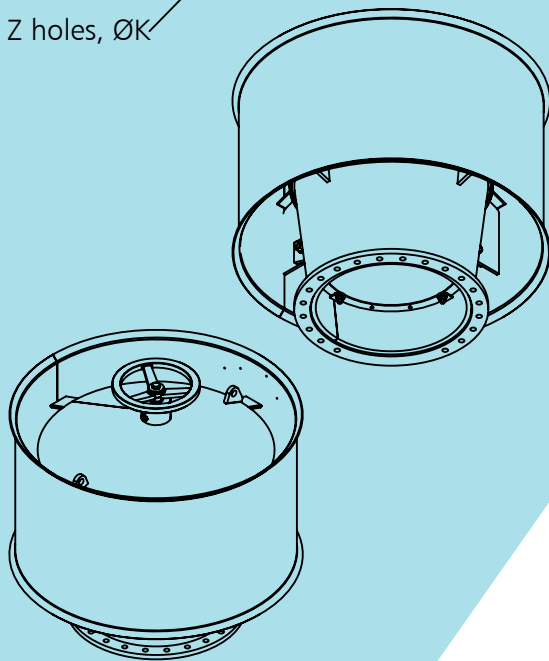
Size	A [mm]	B [mm]	B2 [mm]	C* [mm]	D [mm]	E [mm]	F [mm]	G* [mm]	C.H	T1 [mm]	T2 [mm]	Z x K [pcs x mm]	Weight [kg]
150	150	312	-	220	613	219	236	250	300	10	4	8x12	~36
200	200	392	-	260	613	215	245	290	300	10	4	8x12	~46
250	250	542	590	310	~643	200	310	334	300	10	4	8x12	~65
315	315	592	640	360	~663	200	310	400	300	10	4	8x14	~73
355	355	644	690	405	~682	200	310	440	300	10	4	8x14	~75
400	400	700	740	460	~699	200	310	484	300	10	4	12x14	~90
450	450	800	840	510	~721	200	310	534	300	10	4	12x14	~95
500	500	900	940	560	~736	200	310	584	300	10	4	12x14	~121
550	550	1000	1040	630	~785	200	310	634	300	10	4	16x14	~150
630	630	1100	1140	698	~835	230	385	736	350	10	5	16x14	~210
710	710	1250	1290	775	~865	230	435	816	350	10	5	16x14	~260
800	800	1400	1440	870	~899	230	435	906	350	10	5	16x19	~290
900	900	1600	1640	980	~936	230	460	1028	350	10	5	16x19	~310
1000	1000	1800	1840	1080	~1025	230	550	1128	350	10	5	20x19	~375
1120	1120	2000	2040	1200	~1065	240	600	1248	375	10	5	20x19	~440
1250	1250	2250	2290	1320	~1105	240	625	1380	375	10	5	24x14	~495

\* standard Nyborg-Mawent drilling, other available on request

# B1K



Z holes, ØK



## B1K

Size	A [mm]	B* [mm]	C* [mm]	D* [mm]	E [mm]	T1 [mm]	T2 [mm]	Z x K [psc x mm]	Weight [kg]
200	405	290	260	200	405	3		8x12	~17
250	410	334	310	250	405	3		8x12	~20
315	550	384	360	315	470	3		8x14	~27
355	770	434	405	355	520	3		8x14	~28
400	820	484	460	400	575	3		12x14	~47
450	890	534	510	450	660	3		12x14	~57
500	980	584	560	500	730	3		12x14	~70

\* standard Nyborg-Mawent drilling, other available on request

# 6. MARKING

An example of marking for ventilation hood, size

- **KHR 400**, made of carbon steel hot dip galvanized, drilling ac. to **ISO 15138**, with additional wire mesh.

**Nyborg-Mawent S.A.**

Ciepła Street 6, 82-200 Malbork, POLAND

T +48 55 646 63 00

F +48 55 646 63 09

office@nyborg-mawent.com

www.nyborg-mawent.com

