

## APPLICATIONS

Centrifugal fans are classified into three main groups; low, medium and high pressure.

## DESIGN

The design is based on three main groups, low, medium and high pressure.

The fan impeller is designed and shaped in accordance with its application, conditioned by the required air volume and pressure drop.

The impellers are classified into four main groups. Also tailor made solutions are available like spark proof design.

## EXECUTION

LSV and MSV are manufactured in sea water resistant aluminium and painted.

Stainless steel / Aisi 316 execution or steel, galvanized or painted are delivered on request.

The impeller is made of salt- and ammonia resistant aluminium, aerodynamically shaped and balanced. In four main groups:

Type B: Backward, convex curved blades

Type F: Forward curved blades, Sciroccio wheel

Type Z: Backward, concave curved blades, self cleaning

Type R: Radial blades, for transportation fan

The air capacities vary **from 1000 to 240 000 m<sup>3</sup>/h.**

## ELECTRIC MOTOR

The fans are usually supplied with standard squirrel caged inductive electric motor. They may also be supplied with other types of electric motors, like explosion proof or 2-speed motors.

## ACCESSORIES

- Vibration dampers
- Flexible connections inlet/outlet
- Motor pedestal (required for heavy motors)
- Flanged inlet
- Contra flange inlet/outlet
- Protection grid inlet/outlet
- Base frame (belt driven execution only)
- Inspection hatch
- Ex – execution with anti-spark track

## SPECIAL DESIGNS

- Belt driven execution



NYBORG - MAWENT

NYBORG-MAWENT S.A.  
ul. Ciepła 6, 82-200 Malbork  
tel.: +48 55 646 63 00  
fax: +48 55 646 63 09  
office@nyborg-mawent.com  
www.nyborg-mawent.com

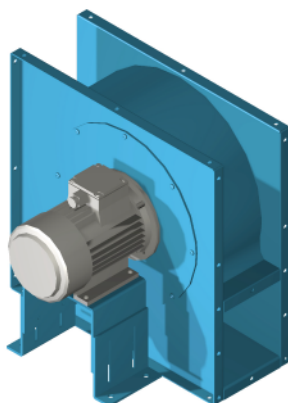


NYBORG AS  
N-6230 Sykkylven, Norway  
tel.: +47 70 25 40 80  
fax: +47 70 25 29 08  
office@nyborgfan.com  
www.nyborgfan.com

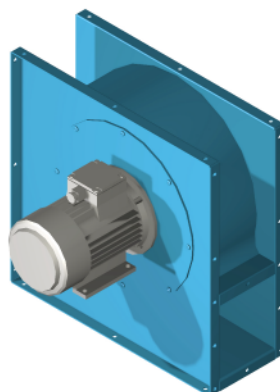


# CENTRIFUGAL FANS

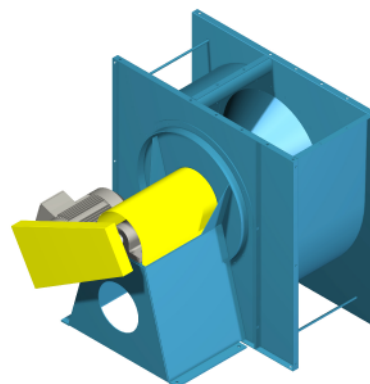
LSV - B1



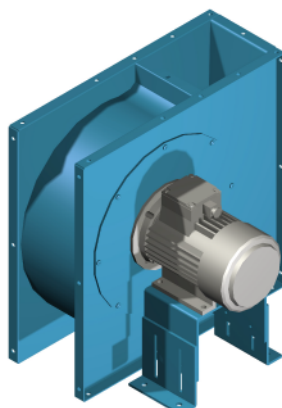
LSV - B1



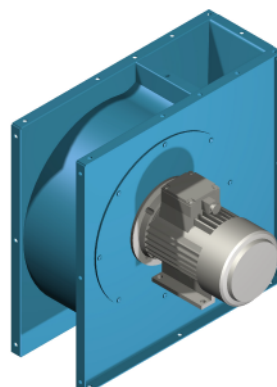
LSV - B3



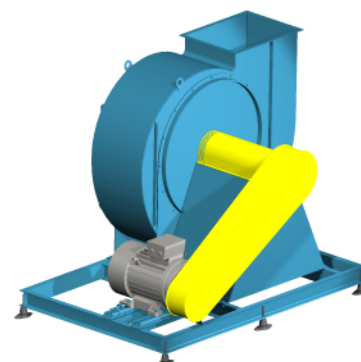
MSV - B1



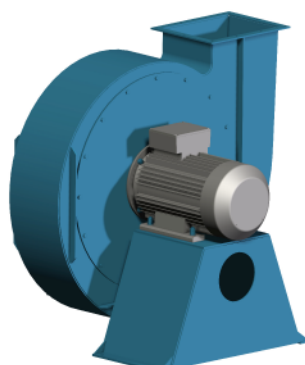
MSV - B1



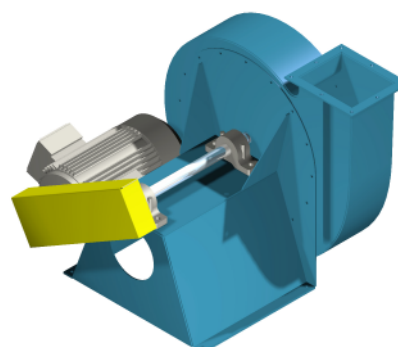
MSV - B2



HSV - B1



HSV - B3



**NYBORG-MAWENT S.A.**  
ul. Ciepła 6, 82-200 Malbork  
tel.: +48 55 646 63 00  
fax: +48 55 646 63 09  
office@nyborg-mawent.com  
www.nyborg-mawent.com



**NYBORG AS**  
N-6230 Sykkylven, Norway  
tel.: +47 70 25 40 80  
fax: +47 70 25 29 08  
office@nyborgfan.com  
www.nyborgfan.com

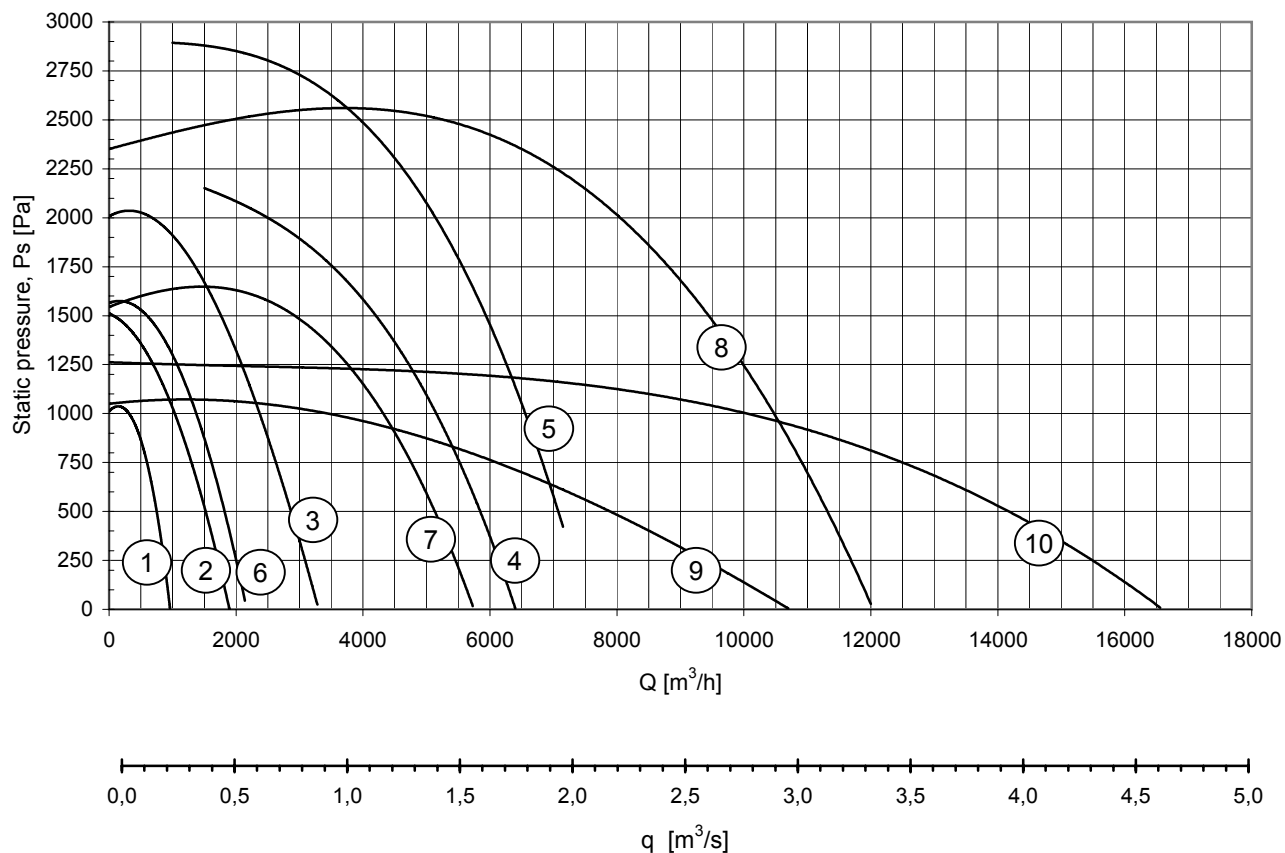


# CENTRIFUGAL FANS

## selection curves

### (50Hz)

## LSV and MSV



Curve	Fan	rpm	Fan power cons. [kW]	Sound press. [dBA] 1m	Motor	Motor power [kW]	Current [A] (400V)	Current [A] (230V)
1	MSV 125 B1	2900	0,34	70	71M02K	0,37	1,05	1,9
2	MSV 160 B1	2900	0,58	75	80M02K	0,86	1,85	3,35
3	MSV 200 B1	2900	1,18	79	90S02	1,5	3,5	6,1
4	MSV 250 B1	2900	3,4	85	112M02	4	8,2	14,2
5	MSV 315 B1	2900	5,5	88	132S02K	5,5	11,7	19,6
6	LSV 250 B1	2900	0,88	75	80M02	1,1	2,55	4,4
7	LSV 315 B1	2900	1,92	81	90L02	2,2	4,8	8,4
8	LSV 400 B1	2900	7,5	88	132S02	7,5	15	25,5
9	LSV 500 B1	1450	2,4	76	100L04	3	7	12
10	LSV 600 B1	1450	3,8	81	112M04	4	9,3	16

nybmw\_06-01  
01.mar.06



**NYBORG-MAWENT S.A.**  
ul. Ciepła 6, 82-200 Malbork  
tel.: +48 55 646 63 00  
fax: +48 55 646 63 09  
office@nyborg-mawent.com  
www.nyborg-mawent.com



**NYBORG AS**  
N-6230 Sykkylven, Norway  
tel.: +47 70 25 40 80  
fax: +47 70 25 29 08  
office@nyborgfan.com  
www.nyborgfan.com

## LSV and MSV

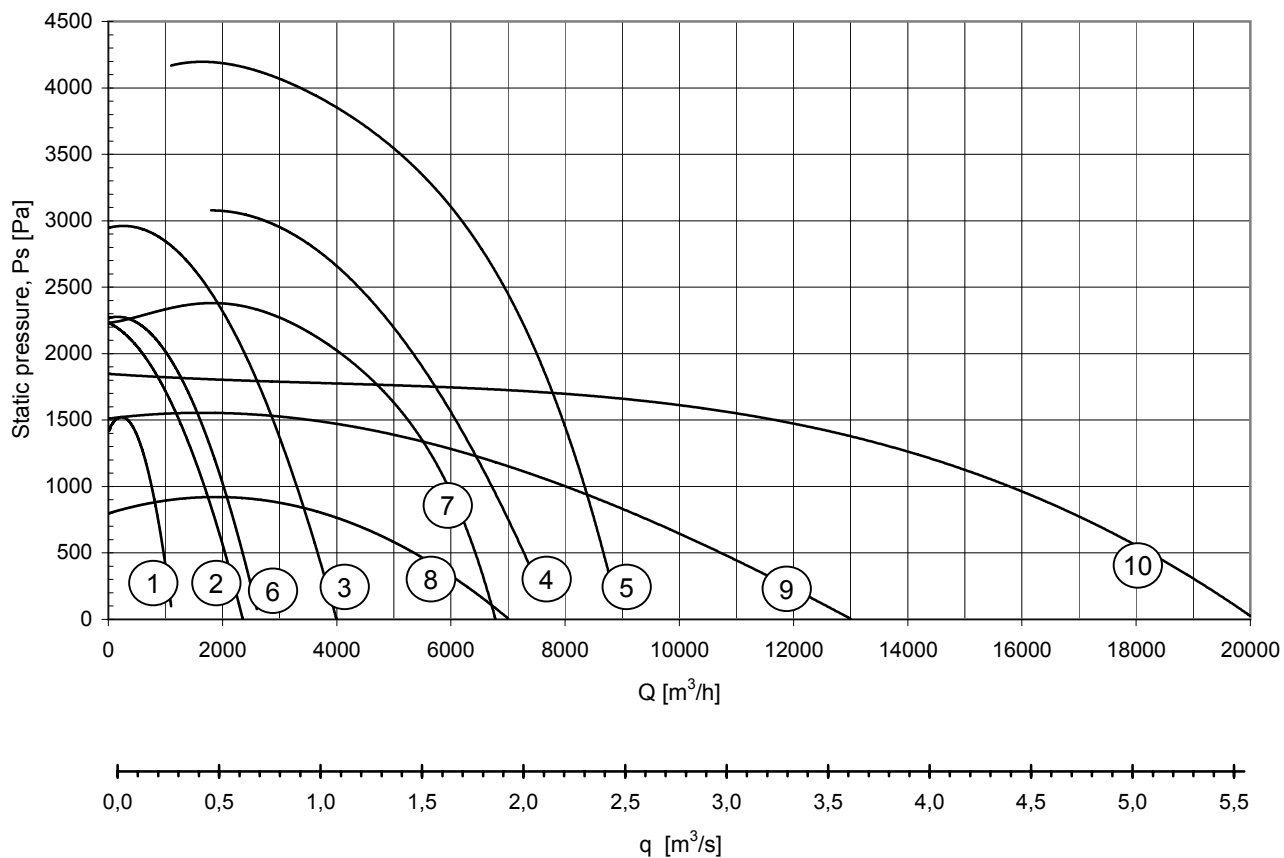


# CENTRIFUGAL FANS

## selection curves

### (60Hz)

**LSV and MSV**



Curve	Fan	rpm	Fan power cons. [kW]	Sound press. [dBA] 1m	Motor	Motor power [kW]	Current [A] (440V)
1	MSV 125 B1	3500	0,58	75	71M02	0,63	1,4
2	MSV 160 B1	3500	1,02	80	80M02	1,3	2,5
3	MSV 200 B1	3500	2,08	83	90L02	2,55	4,8
4	MSV 250 B1	3500	6,1	89	112M02	6,3	11
5	MSV 315 B1	3500	9,6	93	132M02	12,6	20,6
6	LSV 250 B1	3500	1,55	82	90S02	1,75	3,4
7	LSV 315 B1	3500	3,4	85	100L02	3,45	6,3
8	LSV 400 B1	1750	1,55	72	90L04	1,75	3,6
9	LSV 500 B1	1750	4,2	79	112M04	4,6	8,8
10	LSV 600 B1	1750	6,7	84	132M04	8,6	16

nybmw\_06-02  
01.mar.06



**NYBORG-MAWENT S.A.**  
ul. Ciepła 6, 82-200 Malbork  
tel.: +48 55 646 63 00  
fax: +48 55 646 63 09  
office@nyborg-mawent.com  
www.nyborg-mawent.com

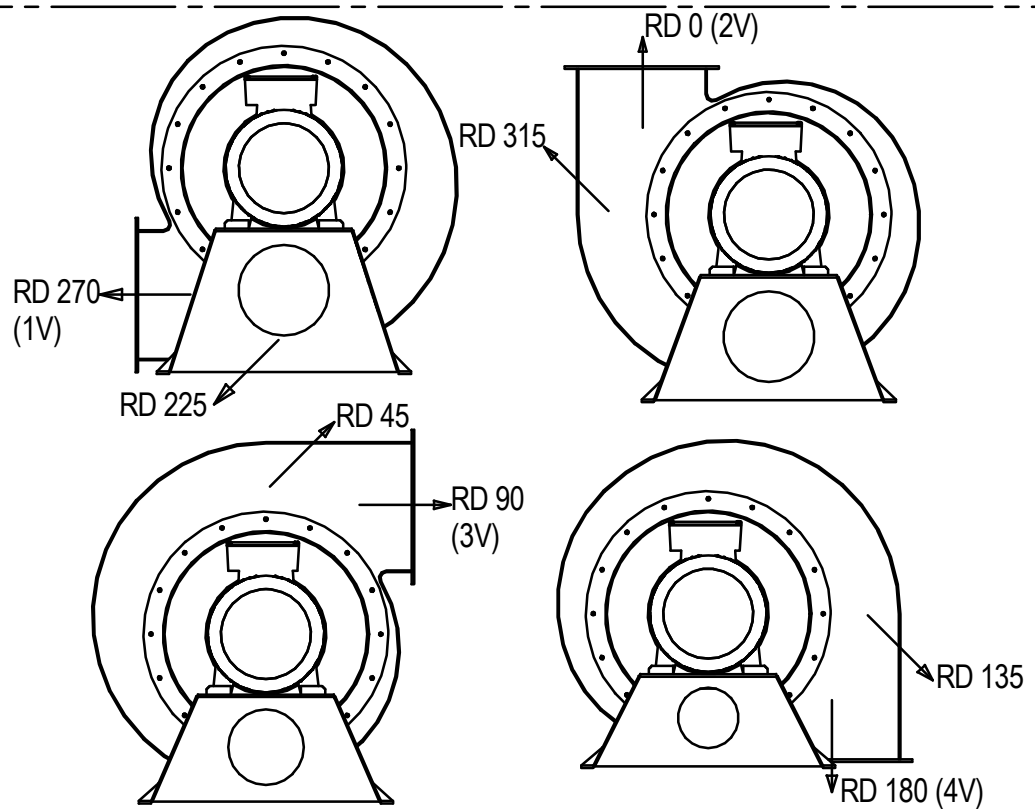
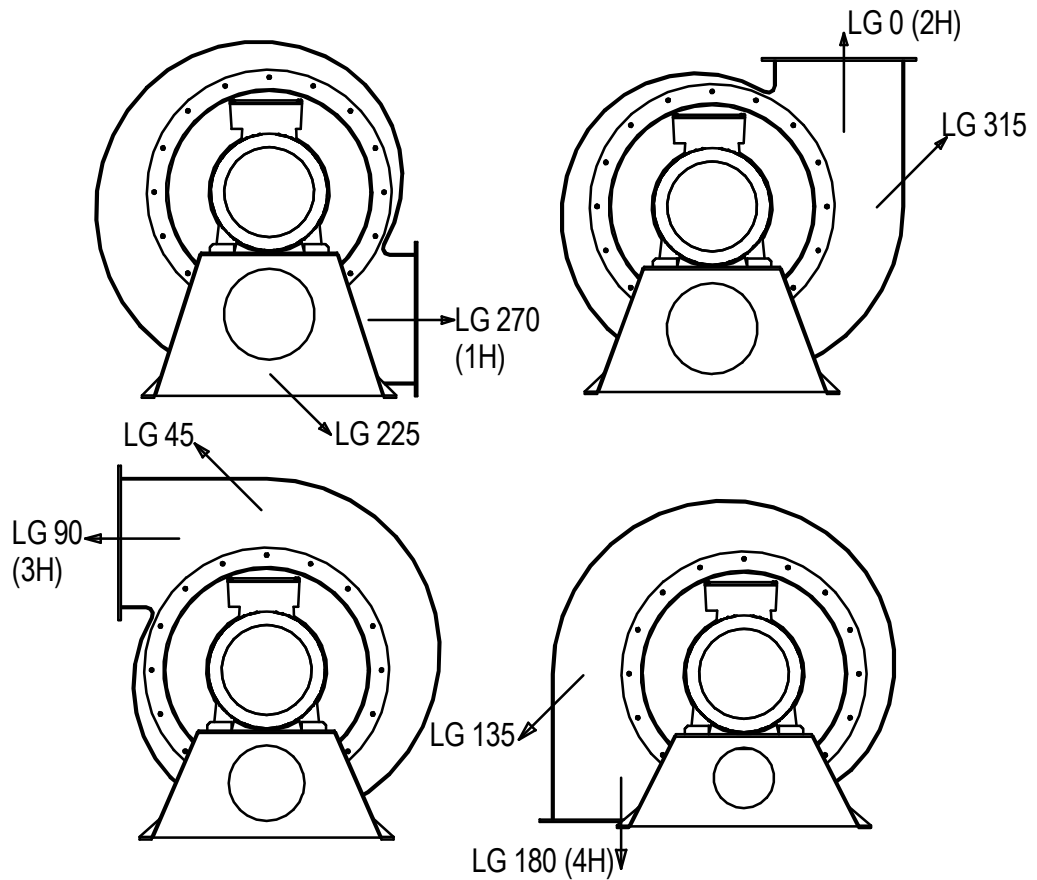


**NYBORG AS**  
N-6230 Sykkylven, Norway  
tel.: +47 70 25 40 80  
fax: +47 70 25 29 08  
office@nyborgfan.com  
www.nyborgfan.com

**LSV and MSV**



# MOUNTING POSITIONS IN ACCORDANCE TO EUROVENT CENTRIFUGAL FANS



06.12.00

F. Østro  
4-2013-1



**NYBORG - MAWENT**

**NYBORG-MAWENT S.A.**  
ul. Ciepła 6, 82-200 Malbork  
tel.: +48 55 646 63 00  
fax: +48 55 646 63 09  
office@nyborg-mawent.com  
www.nyborg-mawent.com



**NYBORG AS**  
N-6230 Sykkylven, Norway  
tel.: +47 70 25 40 80  
fax: +47 70 25 29 08  
office@nyborgfan.com  
www.nyborgfan.com



# Centrifugal Fans

## Explanation of Fan Model Number

---

Fan model number is stated in the following way: Centrifugal Fan model MSV 160 B1.

MSV	160	B	1
figure no 1-3	Figure no 4-6	7	8

### 1. - 3. figure:

LSV : Low pressure centrifugal fan  
MSV : Medium pressure centrifugal fan  
HSV, HZV, HRV : High pressure centrifugal fan

### 4. -6. figure:

The size of the fan.

The numbers refers to nominal diameter (mm) on the fan's suction flange.

### 8.figure

- 1: Direct driven. impeller mounted on motor shaft
- 2: Belt driven. motor placed alongside the fan
- 3: Belt driven. motor mounted on the fan, belt screened



**NYBORG-MAWENT S.A.**  
ul. Ciepła 6, 82-200 Malbork  
tel.: +48 55 646 63 00  
fax: +48 55 646 63 09  
office@nyborg-mawent.com  
www.nyborg-mawent.com



**NYBORG AS**  
N-6230 Sykkylven, Norway  
tel.: +47 70 25 40 80  
fax: +47 70 25 29 08  
office@nyborgfan.com  
www.nyborgfan.com



## SOUND POWER LEVELS (SWL) CALC. NYBORG CENTRIFUGAL FANS

FAN DATA			dB values at centre Hz								Theor
FAN MODEL	Rpm	Impeller	63	125	250	500	1000	2000	4000	8000	dB A
LSV 250 B	1450	B12x300x80	80	72	70	62	62	57	54	52	57
LSV 250 B	2900	B12x300x80	90	93	85	84	76	75	71	67	75
LSV 315 B	1450	B12x350x100	84	76	74	66	66	61	58	56	61
LSV 315 B	2900	B12x350x100	96	99	91	90	82	81	77	73	81
LSV 400 B	1450	B6x450x100	92	84	82	74	74	69	66	64	70
LSV 500 B	1450	B7x550x125	98	90	88	80	80	75	72	70	76
LSV 600 B	1450	B7x650x140	103	95	93	85	85	80	77	75	81
MSV 125 B	2900	B9x250x50	85	88	80	79	71	70	66	62	70
MSV 160 B	2900	B12x300x60	89	92	84	83	75	74	70	66	75
MSV 200 B	1450	B12x350x70	83	75	73	65	66	60	57	55	60
MSV 200 B	2900	B12x350x70	97	100	92	91	83	82	78	74	79
MSV 250 B	1450	B12x400x80	88	80	78	70	70	65	63	60	65
MSV 250 B	2900	B12x400x80	100	103	95	94	86	85	81	77	85
MSV 315 B	1450	B12x450x90	91	83	81	73	73	68	65	63	69
MSV 315 B	2900	B12x450x90	103	106	98	97	89	88	84	80	88

- Sound power levels in dB. ref. 10<sup>-12</sup> W, internal values in fan openings.
- dBA values applies to 1 m. distance based on a theoretical free field environment.
- The sound power level values above are only intended as a guide, and may be used for calculations for sound pressure levels. (heard by the human ear).



**NYBORG - MAWENT**

**NYBORG-MAWENT S.A.**  
ul. Ciepła 6, 82-200 Malbork  
tel.: +48 55 646 63 00  
fax: +48 55 646 63 09  
office@nyborg-mawent.com  
www.nyborg-mawent.com



**NYBORG AS**  
N-6230 Sykkylven, Norway  
tel.: +47 70 25 40 80  
fax: +47 70 25 29 08  
office@nyborgfan.com  
www.nyborgfan.com



## SOUND POWER LEVELS (SWL) CALC. NYBORG CENTRIFUGAL FANS

FAN DATA			dB values at centre Hz								Theor
FAN MODEL	Rpm	Impeller	63	125	250	500	1000	2000	4000	8000	dBa
LSV 250 B	1750	B12x300x80	82	76	74	67	65	61	58	55	61
LSV 250 B	3500	B12x300x80	95	98	93	90	84	81	77	74	82
LSV 315 B	1750	B12x350x100	85	79	77	70	68	64	61	58	64
LSV 315 B	3500	B12x350x100	98	101	96	93	87	84	80	77	85
LSV 400 B	1750	B6x450x100	93	87	85	78	76	72	69	66	72
LSV 500 B	1750	B7x550x125	99	93	91	84	82	78	75	72	79
LSV 600 B	1750	B7x650x140	104	98	96	89	87	83	80	77	84
MSV 125 B	3500	B9x250x50	89	92	87	84	78	75	71	68	75
MSV 160 B	3500	B12x300x60	94	97	92	89	83	80	76	63	80
MSV 200 B	1750	B12x350x70	84	78	76	69	67	63	60	57	63
MSV 200 B	3500	B12x350x70	97	100	95	93	86	83	79	76	83
MSV 250 B	1750	B12x400x80	90	84	82	75	73	69	66	63	70
MSV 250 B	3500	B12x400x80	102	105	100	97	91	88	84	81	89
MSV 315 B	1750	B12x450x90	94	88	86	79	77	73	70	67	73
MSV 315 B	3500	B12x450x90	106	109	104	101	95	92	88	85	93

- Sound power levels in dB. ref. 10<sup>-12</sup> W, internal values in fan openings.
- dBA values applies to 1 m. distance based on a theoretical free field environment.
- The sound power level values above are only intended as a guide, and may be used for calculations for sound pressure levels. (heard by the human ear).



**NYBORG - MAWENT**

**NYBORG-MAWENT S.A.**  
ul. Ciepła 6, 82-200 Malbork  
tel.: +48 55 646 63 00  
fax: +48 55 646 63 09  
office@nyborg-mawent.com  
www.nyborg-mawent.com



**NYBORG AS**  
N-6230 Sykkylven, Norway  
tel.: +47 70 25 40 80  
fax: +47 70 25 29 08  
office@nyborgfan.com  
www.nyborgfan.com





## PAINTING SPECIFICATION ALUMINIUM FANS

### Surface preparation:

Step No	Description	Thickness	Type	Manufacturer
1	Washing	-	Aluminate (acid)	Alu-Nor
2	Cleaning	-	Water	-

### Painting : Color RAL 5012

Step No	Description	Thickness	Type	Manufacturer
1	Primer	30 my	Joton Washprimer	Jotun
2	Topcoat	40 my	Jotun Ultra Topcoat	Jotun

## GALVANIZE SPECIFICATION STEEL FANS

### Surface preparation:

Step No	Description	Thickness	Type	Manufacturer
1	Cleaning	-	Nitric acid	-
2	Galvanizing	80my	Zn	-



**NYBORG - MAWENT**

**NYBORG-MAWENT S.A.**  
ul. Ciepła 6, 82-200 Malbork  
tel.: +48 55 646 63 00  
fax: +48 55 646 63 09  
office@nyborg-mawent.com  
www.nyborg-mawent.com



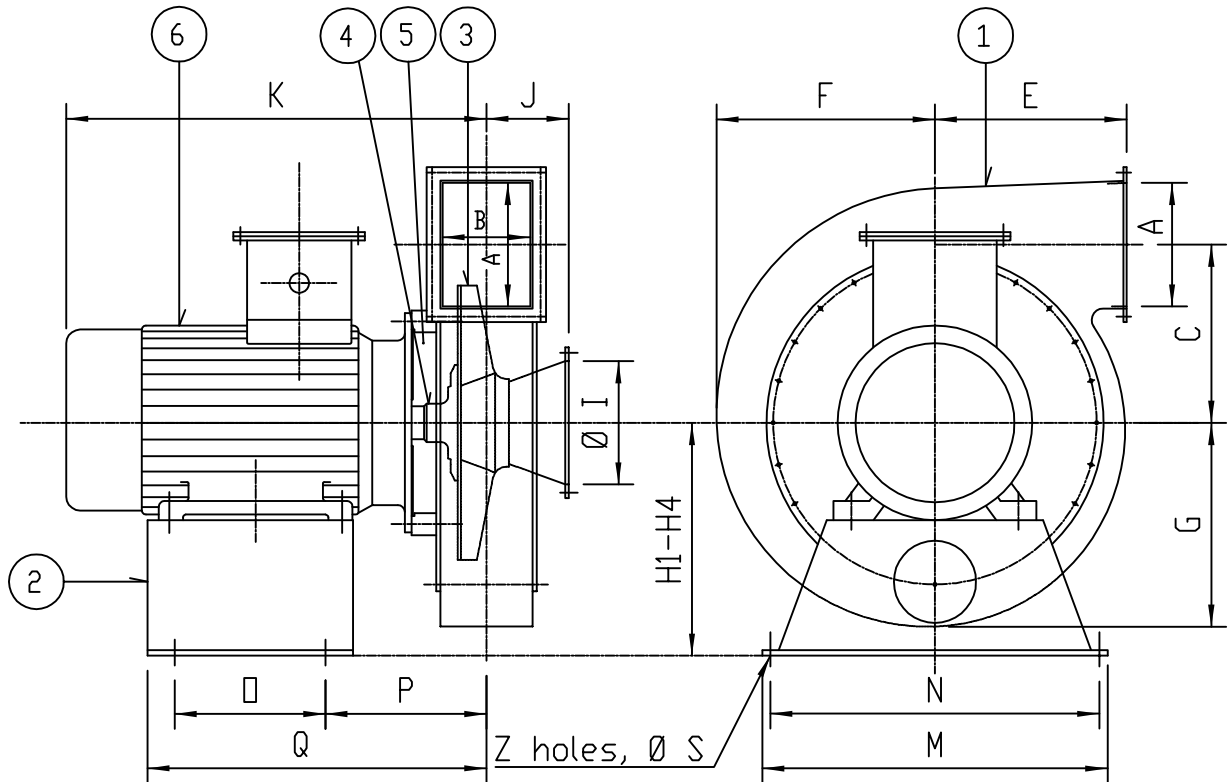
**NYBORG AS**  
N-6230 Sykkylven, Norway  
tel.: +47 70 25 40 80  
fax: +47 70 25 29 08  
office@nyborgfan.com  
www.nyborgfan.com



# HIGH PRESSURE CENTR. FAN

## HSV - B1

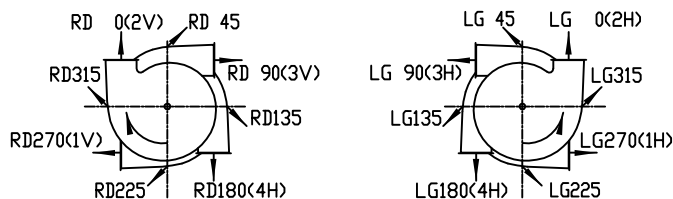
### DIMENSION DRAWING



FAN SIZE	A= Ø I	B	C	E	F	G	H1	H2	H3	H4	J	K	M	N	O	P	Q	Z	S	weight ex cl motor [kg]
150	150	120	280	300	326	297	400	350	350		120		540	500						15
180	180	140	300	325	365	330	450	400	350		120		580	500						21
210	210	170	350	350	400	365	500	450	400		130		610	560						26
250	250	200	375	375	440	400	550	450	450		150		700	650						72
300	300	240	450	450	530	480	675	550	500		170		800	750						97
350	350	240	500	500	605	540	750	650	550		210		800	750						
400	400	300	550	550	660	660	800	700	650		250		1000	900						
450	450	350	625	600	740	680	900	800	700		235		1100	1000						
500	500	400	700	700	830	740	1030	900	800		270		1200	1100						
600	600	460	750	750	900	820	1150	950	850		320		1300	1200						
700	700	640	880	880	1065	950	1300	1150	1000		350		1500	1420						

Mounting Positions in accordance to "Eurovent"

Configurations to be seen from shaft side.



- ① FAN HOUSING.  
Matl.:
- ② MOTOR PEDESTAL.  
Matl.:
- ③ FAN IMPELLER.  
Matl.: Salt and amoniaresistive aluminium alloy.
- ④ SHAFT SEAL OR GASTIGHT ASSEMBLY.  
If Applicable
- ⑤ AIR GAP BETWEEN MOTOR AND SEAL.  
If Applicable
- ⑥ EL.MOTOR: Model:                    V:                    Hz:  
kW:                    Rpm:                    V:                    Hz:

Date: 11.10.96

4-1154-m

Drawn: M.Berge



**NYBORG-MAWENT S.A.**  
 ul. Ciepla 6, 82-200 Malbork  
 tel.: +48 55 646 63 00  
 fax: +48 55 646 63 09  
 office@nyborg-mawent.com  
 www.nyborg-mawent.com



**NYBORG AS**  
 N-6230 Sykkylven, Norway  
 tel.: +47 70 25 40 80  
 fax: +47 70 25 29 08  
 office@nyborgfan.com  
 www.nyborgfan.com

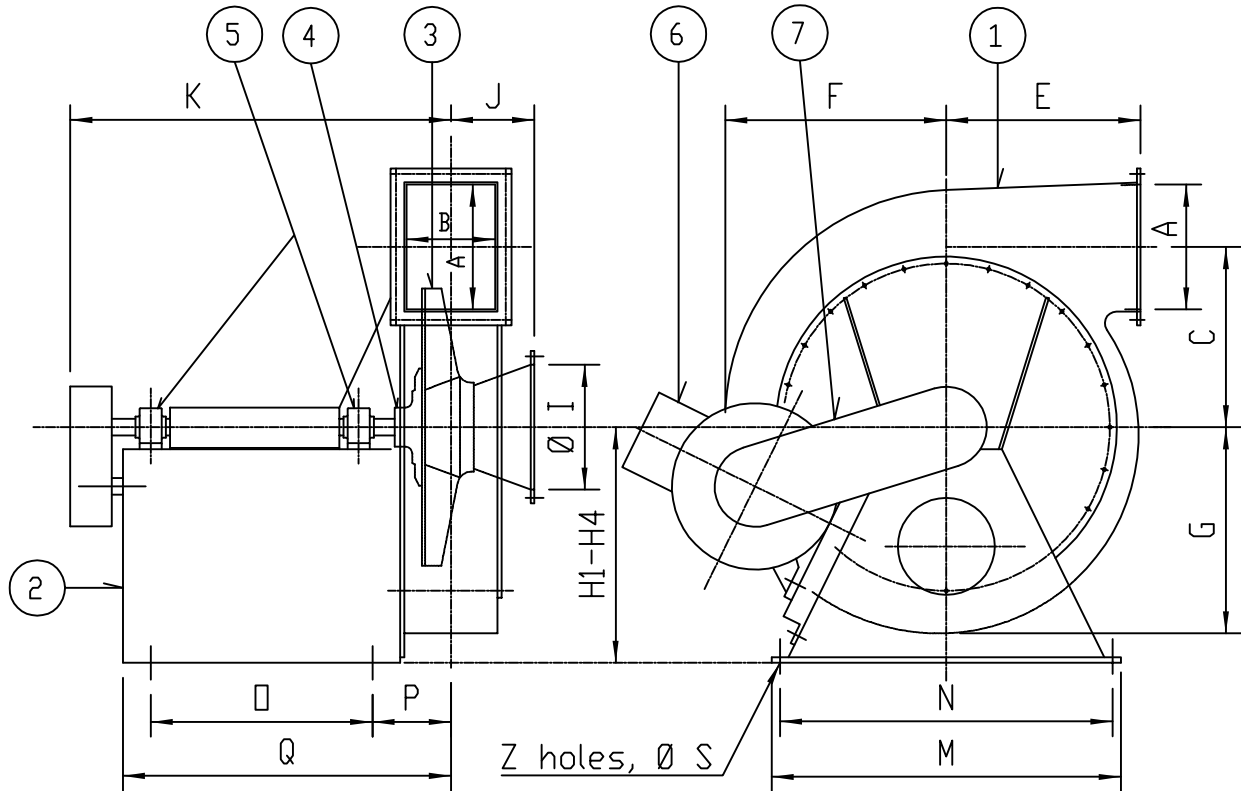
## HSV - B1



# HIGH PRESSURE CENTR. FAN

## Dimensional Sketch

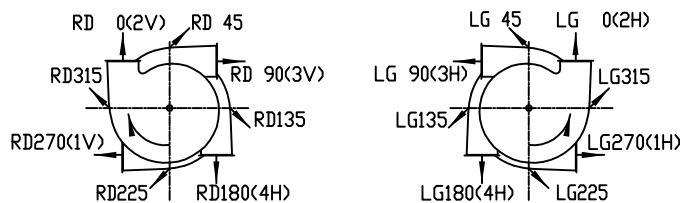
### HSV - B3



SIZE NO	A= Ø I	B	C	E	F	G	H1	H2	H3	H4	J	K	M	N	Ø	P	Q	Z	S
150	150	120	280	300	326	297	400	350	350		120		540	500					
180	180	140	300	325	365	330	450	400	350		120		580	500					
210	210	170	350	350	400	365	500	450	400		130		610	560					
250	250	200	375	375	440	400	550	450	450		150		700	650					
300	300	240	450	450	530	480	675	550	500		170	690	800	750	330	150	520	4	14
350	350	240	500	500	605	540	750	650	550		210		800	750					
400	400	300	550	550	660	660	800	700	650		250		1000	900					
450	450	350	625	600	740	680	900	800	700		235		1100	1000					
500	500	400	700	700	830	740	1030	900	800		270		1200	1100					

Mounting Positions in accordance to "Eurovent"

Configurations to be seen against motor (Drive end)



- ① FAN HOUSING.  
Matl.:
- ② MOTOR and BEARING PEDESTAL.  
Matl.:
- ③ FAN IMPELLER.  
Matl.: Salt and amoniaresistive aluminium alloy.
- ④ SHAFT SEAL OR GASTIGHT ASSEMBLY.  
If Applicable
- ⑤ 2 OFF BALLBEARINGS, type
- ⑥ EL.MOTOR: Model:  
kW: Rpm: V: Hz:
- ⑦ V-BELT TRANSMISSION, c/w Belt Guard

Date: 09/02-95

Revision: 01 4-1155

Drawn: R.Berge



NYBORG - MAWENT

**NYBORG-MAWENT S.A.**  
 ul. Ciepla 6, 82-200 Malbork  
 tel.: +48 55 646 63 00  
 fax: +48 55 646 63 09  
 office@nyborg-mawent.com  
 www.nyborg-mawent.com



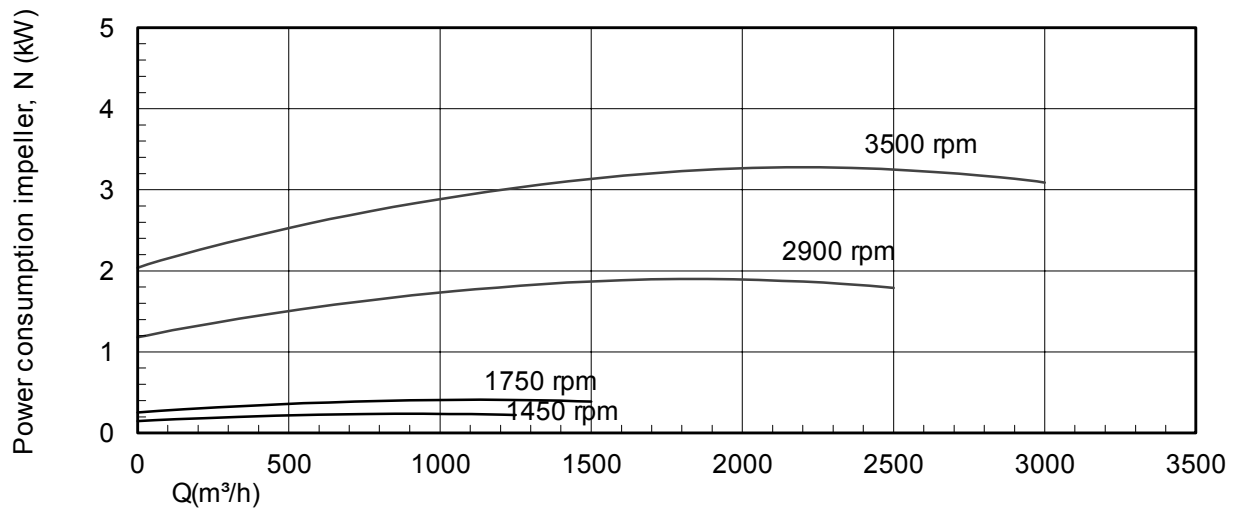
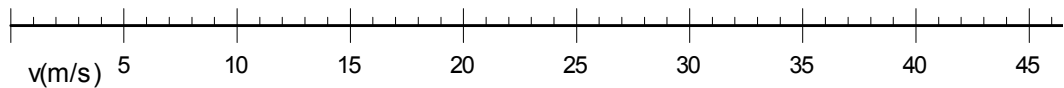
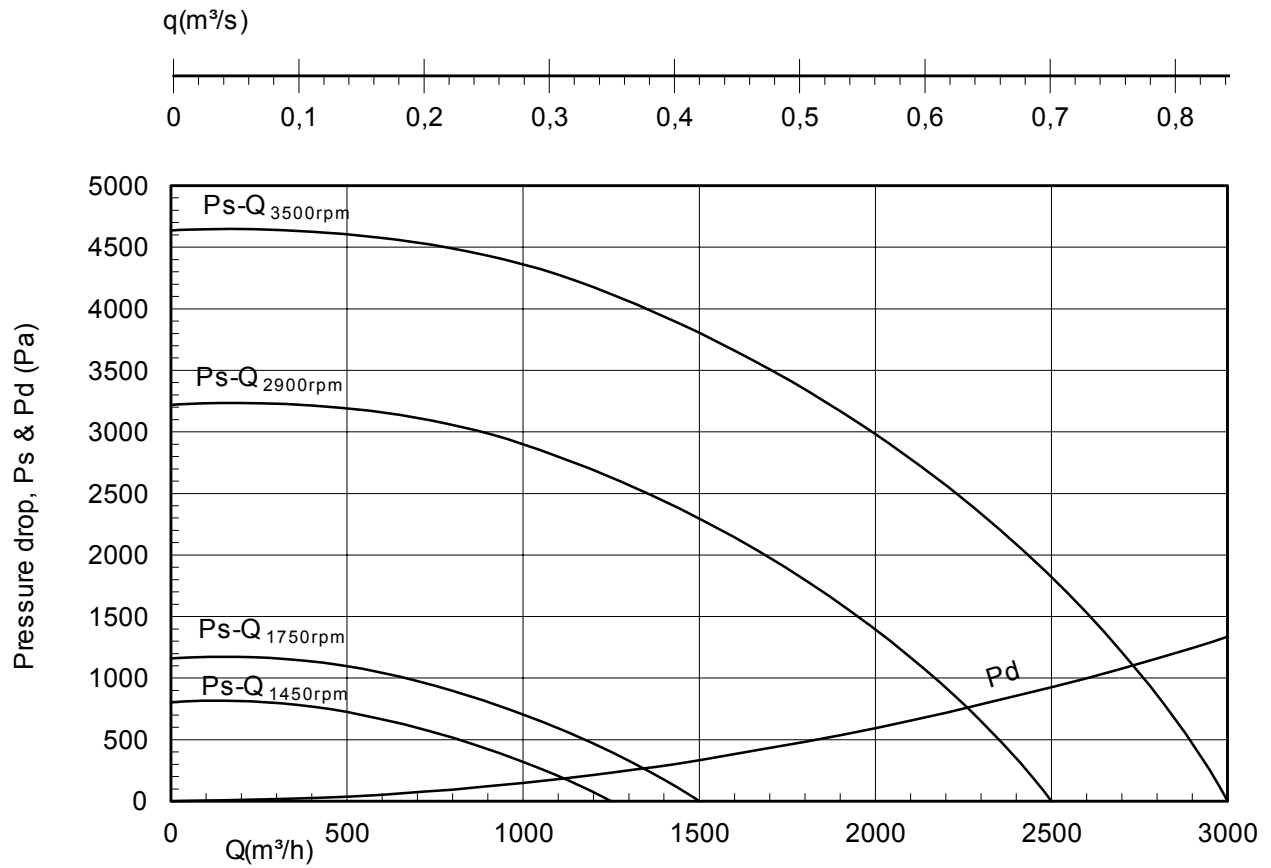
**NYBORG AS**  
 N-6230 Sykkylven, Norway  
 tel.: +47 70 25 40 80  
 fax: +47 70 25 29 08  
 office@nyborgfan.com  
 www.nyborgfan.com

### HSV - B3



# HIGH PRESSURE CENTR. FAN PERFORMANCE DATA

**HSV 150 B**  
Imp: B9x450x25



Hsv01-01



**NYBORG - MAWENT**

**NYBORG-MAWENT S.A.**  
ul. Ciepła 6, 82-200 Malbork  
tel.: +48 55 646 63 00  
fax: +48 55 646 63 09  
office@nyborg-mawent.com  
www.nyborg-mawent.com



**NYBORG AS**  
N-6230 Sykkylven, Norway  
tel.: +47 70 25 40 80  
fax: +47 70 25 29 08  
office@nyborgfan.com  
www.nyborgfan.com

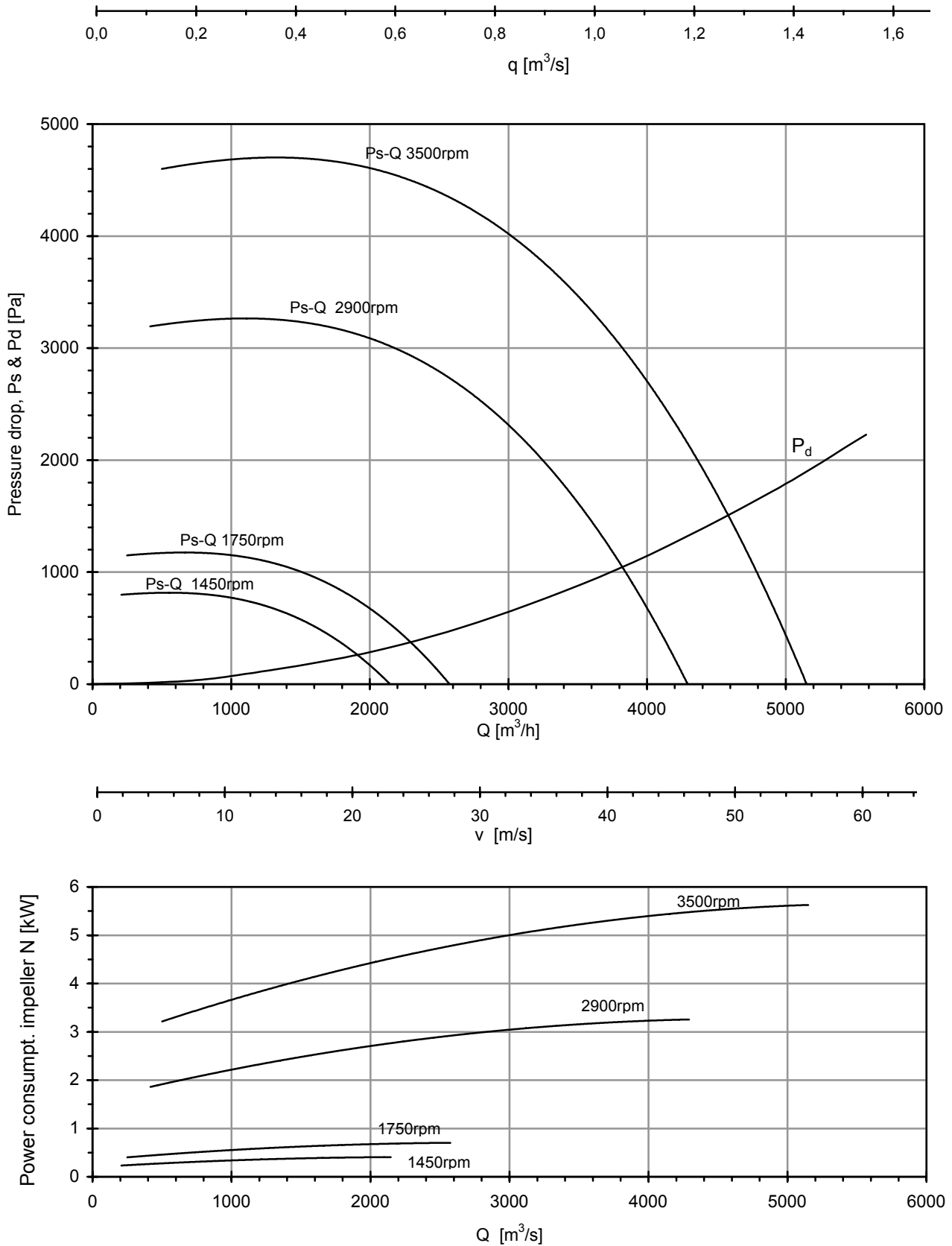
**HSV 150 B**



# NYBORG HIGH PRESS.CENTR. FAN PERFORMANCE DATA

**HSV 180 B**

Imp:B9x450x50



hsv01\_xls-7



**NYBORG - MAWENT**

**NYBORG-MAWENT S.A.**  
ul. Ciepla 6, 82-200 Malbork  
tel.: +48 55 646 63 00  
fax: +48 55 646 63 09  
office@nyborg-mawent.com  
www.nyborg-mawent.com



**NYBORG AS**  
N-6230 Sykkylven, Norway  
tel.: +47 70 25 40 80  
fax: +47 70 25 29 08  
office@nyborgfan.com  
www.nyborgfan.com

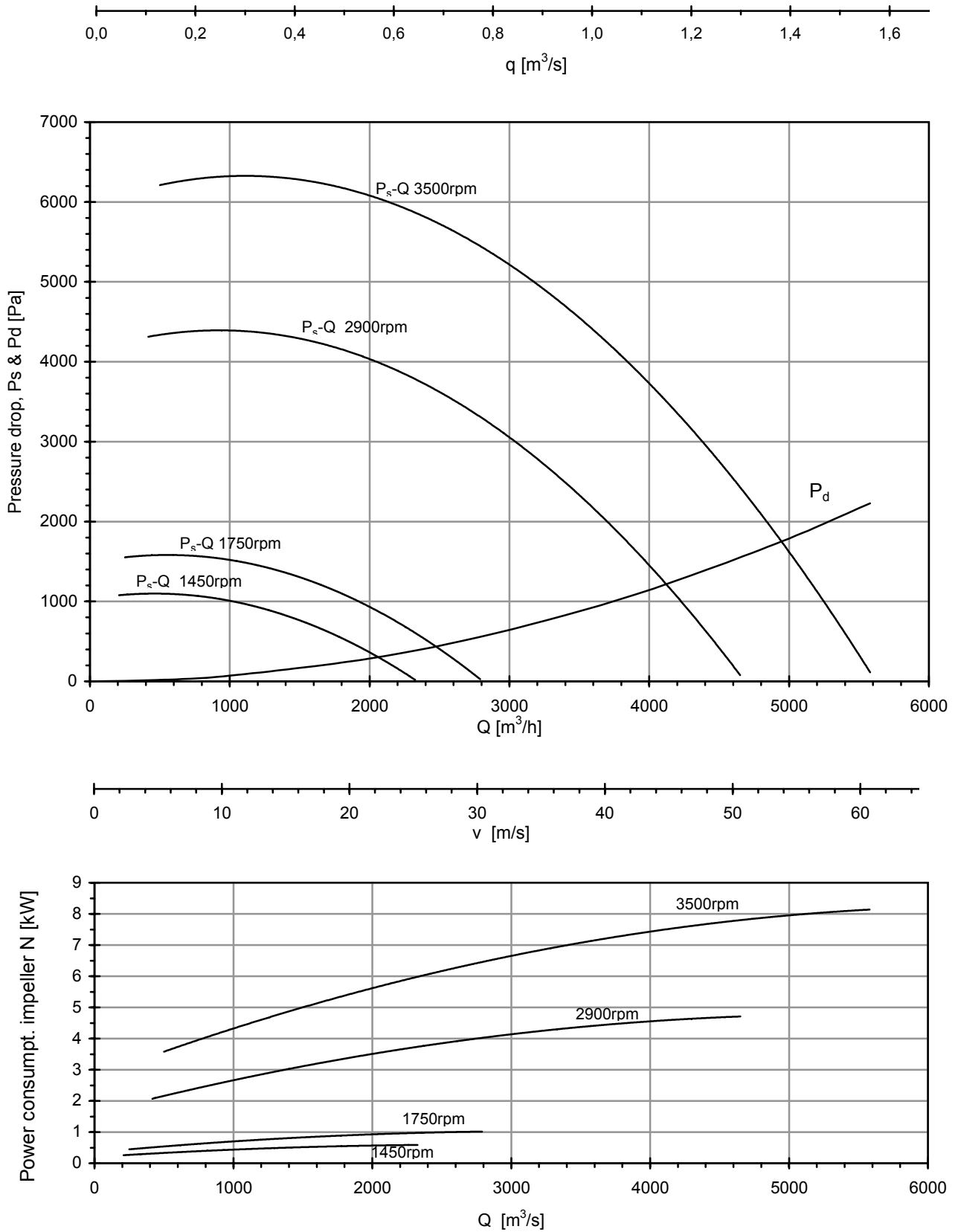
**HSV 180 B**



# NYBORG HIGH PRESS. CENTR. FAN PERFORMANCE DATA

**HSV 180 B**

Imp: B9x500x50



hsv01\_xls-6



**NYBORG - MAWENT**

**NYBORG-MAWENT S.A.**  
ul. Ciepla 6, 82-200 Malbork  
tel.: +48 55 646 63 00  
fax: +48 55 646 63 09  
office@nyborg-mawent.com  
www.nyborg-mawent.com



**NYBORG AS**  
N-6230 Sykkylven, Norway  
tel.: +47 70 25 40 80  
fax: +47 70 25 29 08  
office@nyborgfan.com  
www.nyborgfan.com

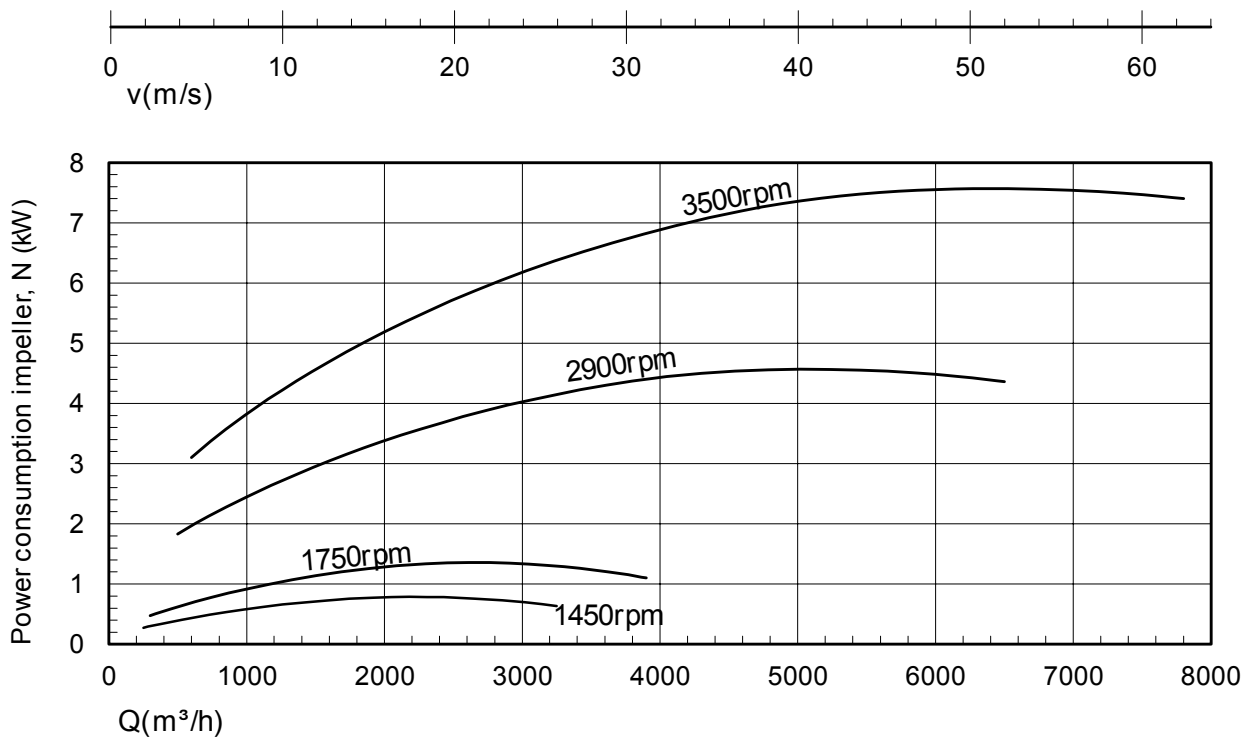
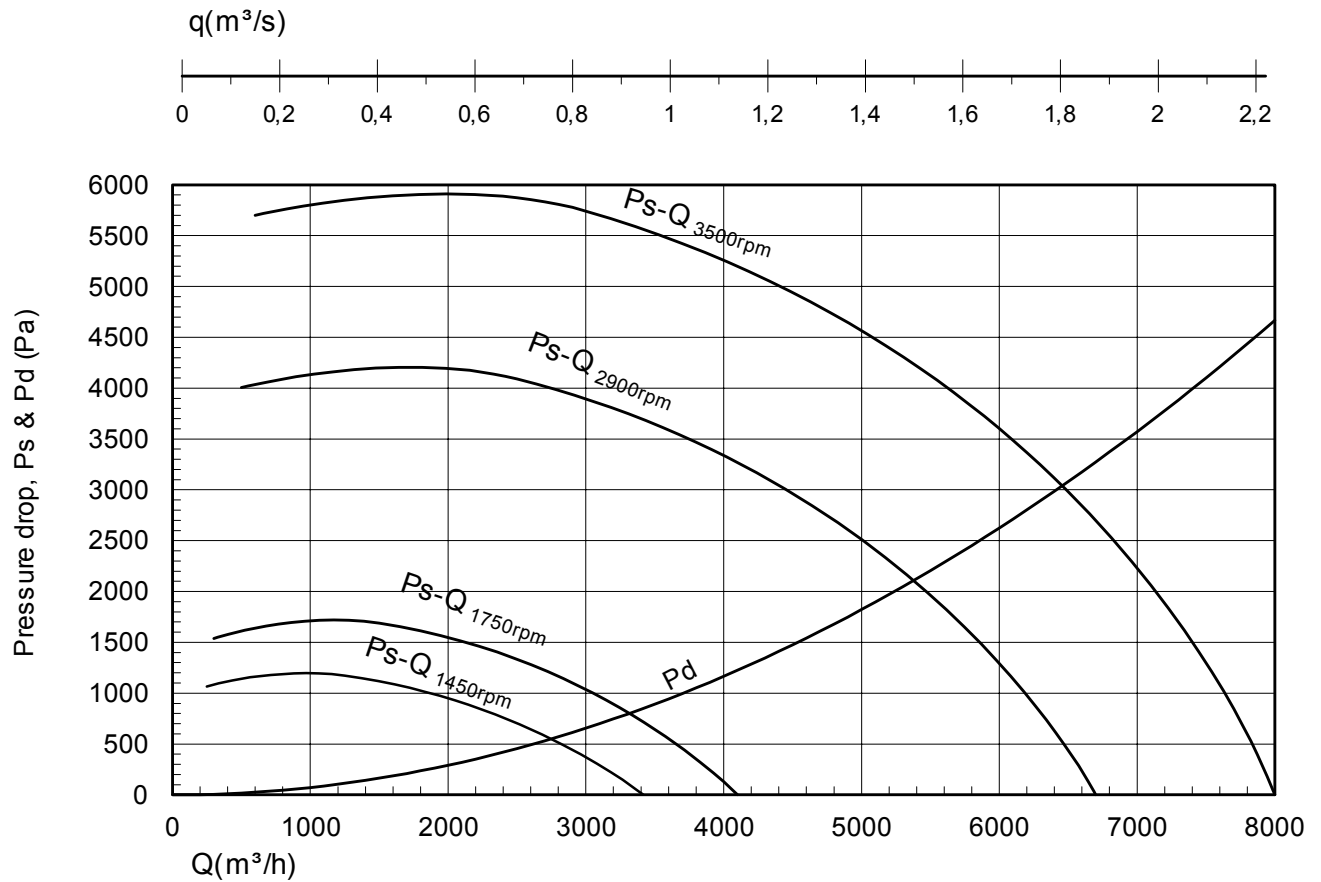
**HSV 180 B**



# HIGH PRESSURE CENTR. FAN PERFORMANCE DATA

## HSV 210 B

Imp: B12x500x50



Hsv01-04



**NYBORG - MAWENT**

**NYBORG-MAWENT S.A.**  
ul. Ciepla 6, 82-200 Malbork  
tel.: +48 55 646 63 00  
fax: +48 55 646 63 09  
office@nyborg-mawent.com  
www.nyborg-mawent.com



**NYBORG AS**  
N-6230 Sykkylven, Norway  
tel.: +47 70 25 40 80  
fax: +47 70 25 29 08  
office@nyborgfan.com  
www.nyborgfan.com

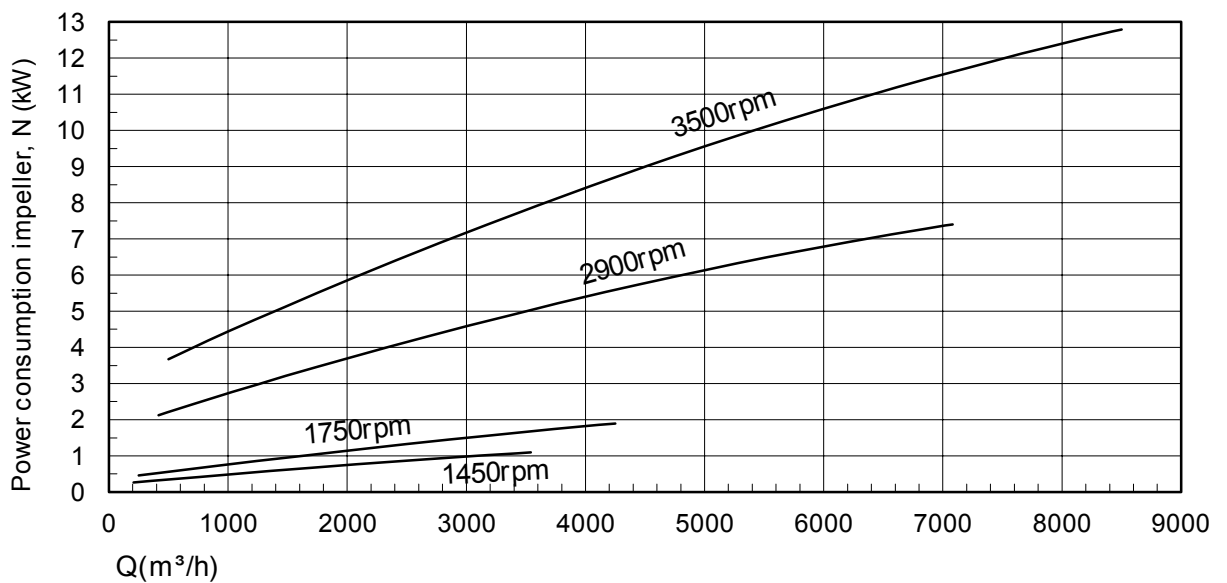
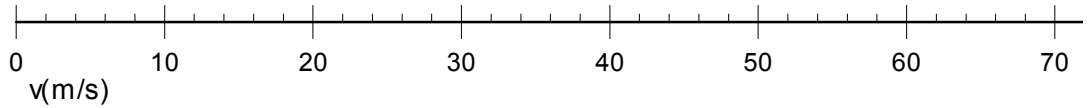
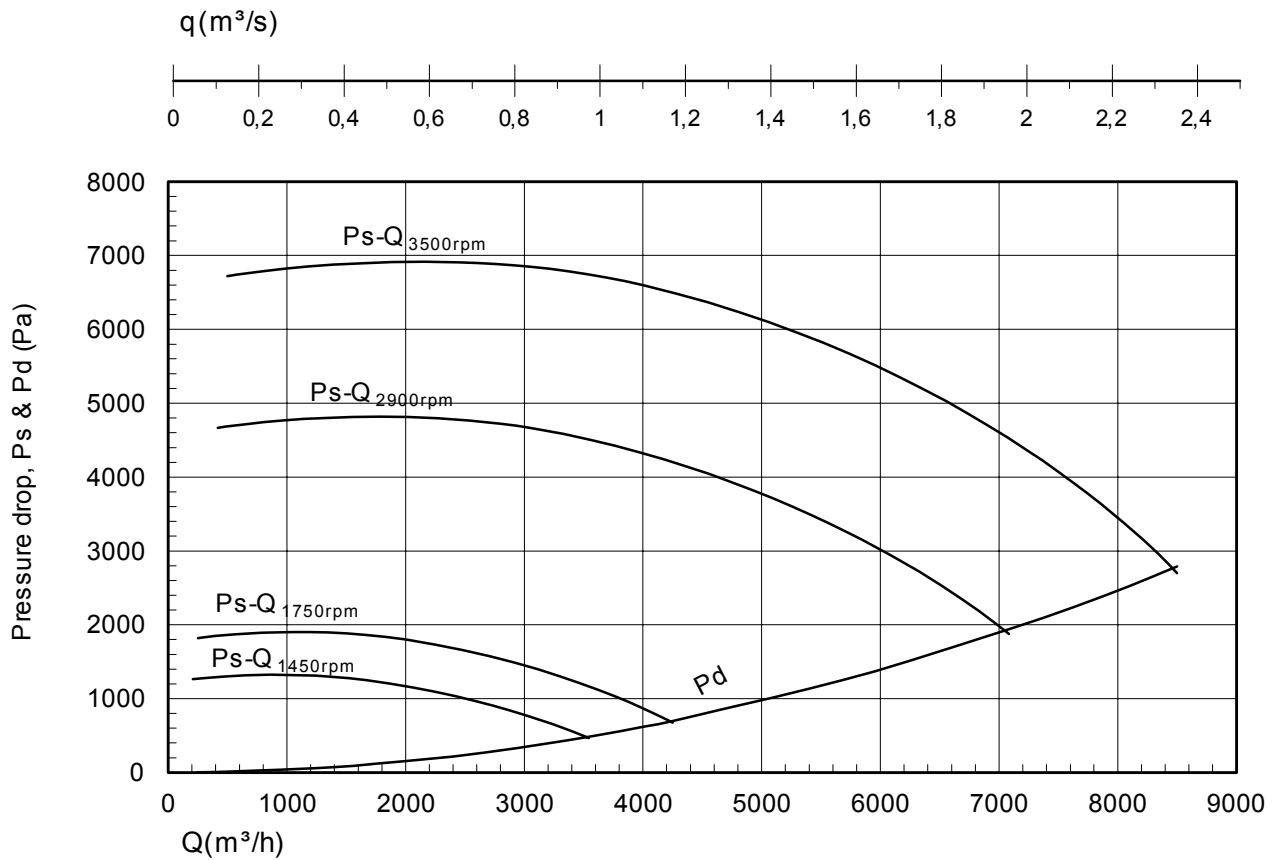
## HSV 210 B



# HIGH PRESSURE CENTR. FAN PERFORMANCE DATA

## HSV 210 B

Imp: B12x550x50



**NYBORG - MAWENT**

**NYBORG-MAWENT S.A.**  
ul. Ciepla 6, 82-200 Malbork  
tel.: +48 55 646 63 00  
fax: +48 55 646 63 09  
office@nyborg-mawent.com  
www.nyborg-mawent.com



**NYBORG AS**  
N-6230 Sykkylven, Norway  
tel.: +47 70 25 40 80  
fax: +47 70 25 29 08  
office@nyborgfan.com  
www.nyborgfan.com

## HSV 210 B

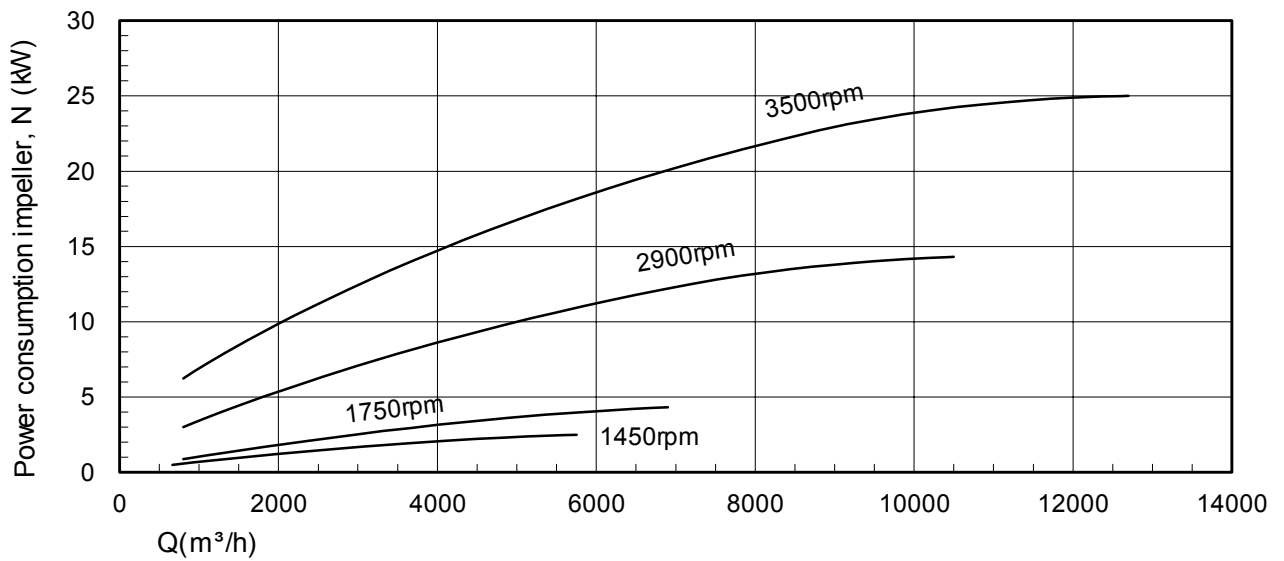
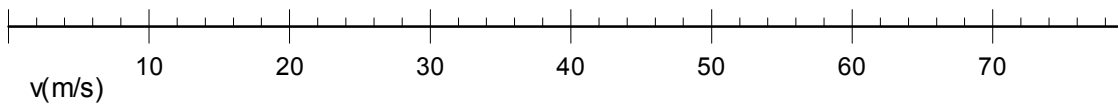
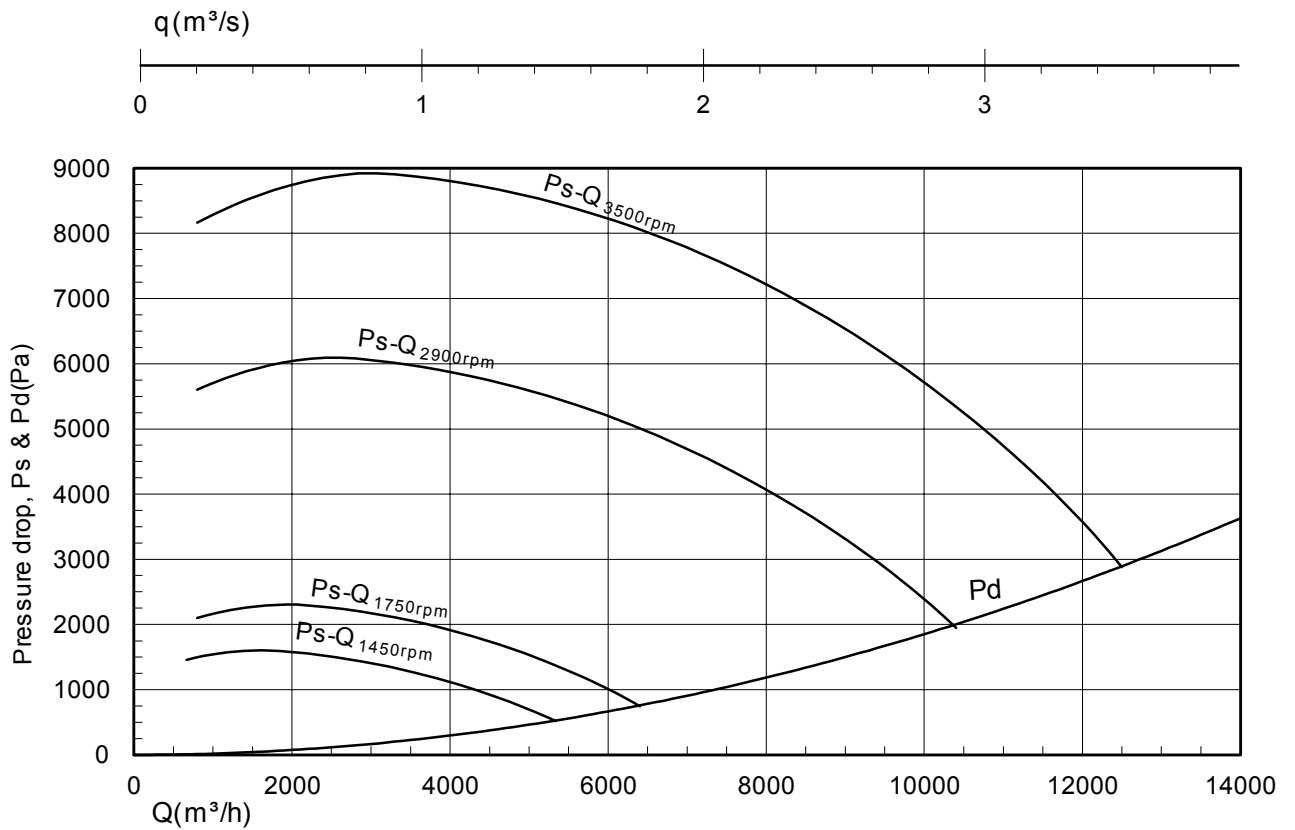




# HIGH PRESSURE CENTR. FAN PERFORMANCE DATA

## HSV 250 B

Imp: B12x620x70



Hsv01-06



**NYBORG - MAWENT**

**NYBORG-MAWENT S.A.**  
ul. Ciepla 6, 82-200 Malbork  
tel.: +48 55 646 63 00  
fax: +48 55 646 63 09  
office@nyborg-mawent.com  
www.nyborg-mawent.com



**NYBORG AS**

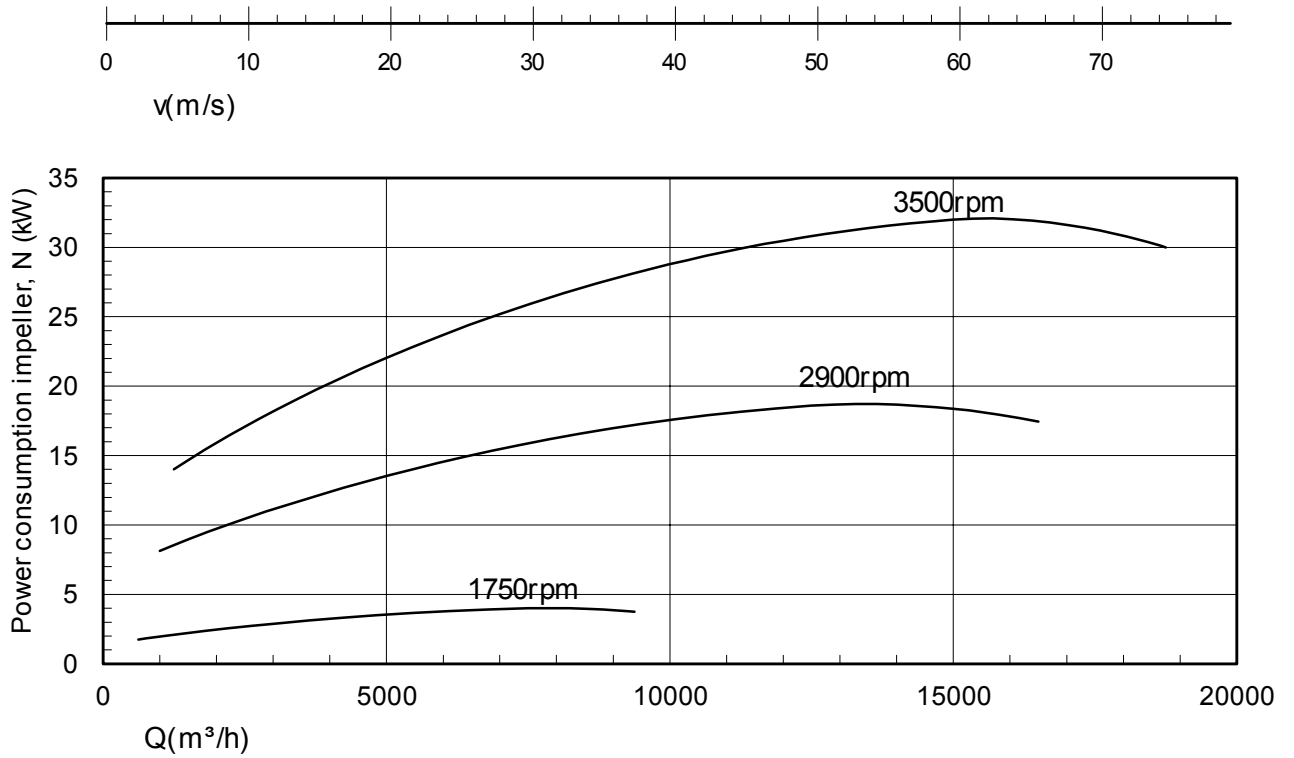
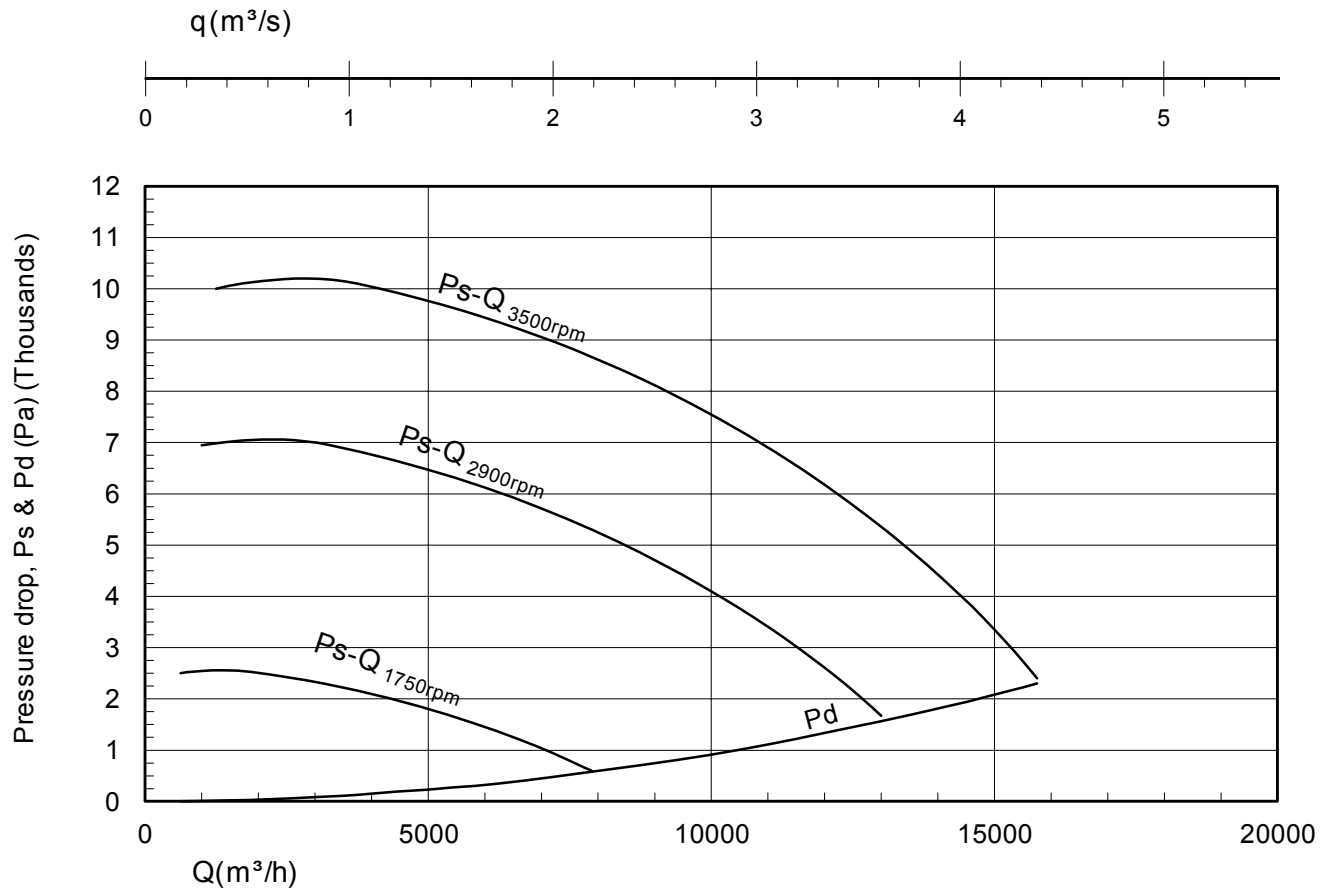
N-6230 Sykkylven, Norway  
tel.: +47 70 25 40 80  
fax: +47 70 25 29 08  
office@nyborgfan.com  
www.nyborgfan.com

## HSV 250 B



# HIGH PRESSURE CENTR. FAN PERFORMANCE DATA

**HSV 300 B**  
Imp: B9x650x75



hsv01-07



**NYBORG - MAWENT**

**NYBORG-MAWENT S.A.**  
ul. Ciepła 6, 82-200 Malbork  
tel.: +48 55 646 63 00  
fax: +48 55 646 63 09  
office@nyborg-mawent.com  
www.nyborg-mawent.com



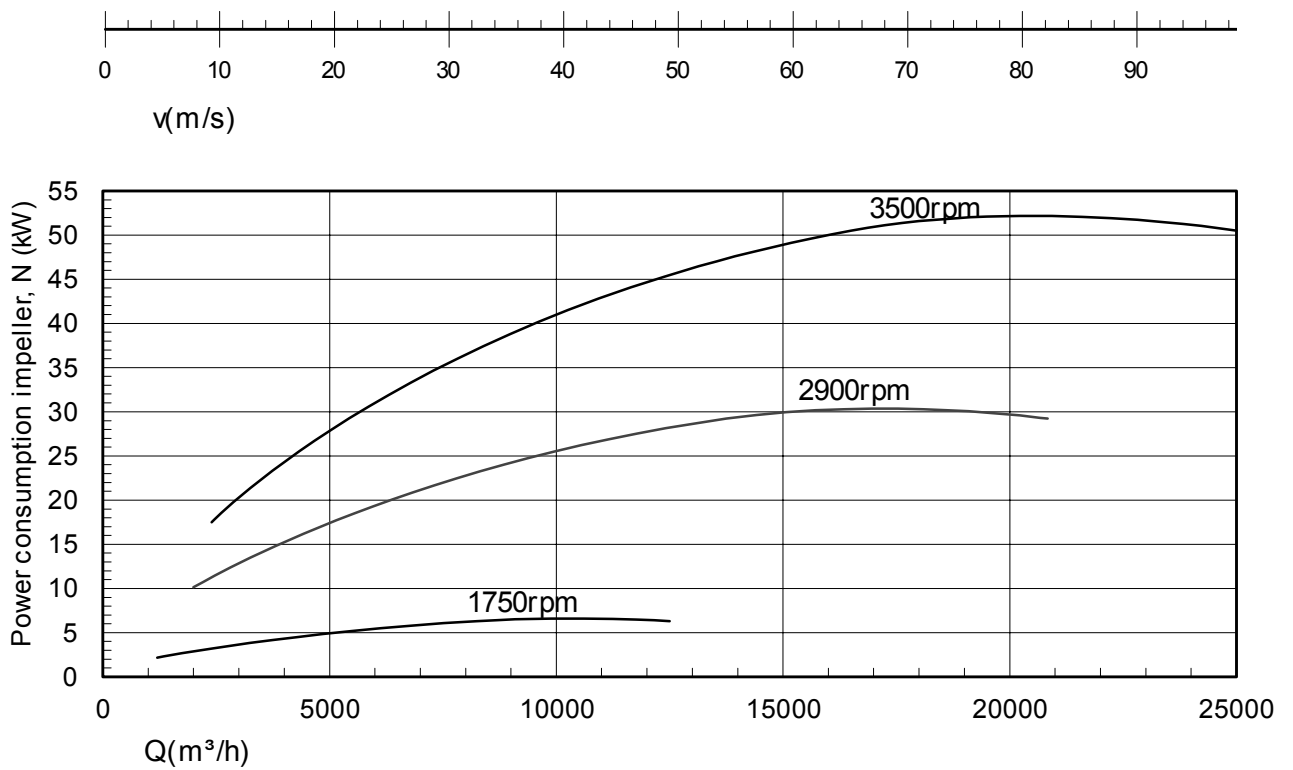
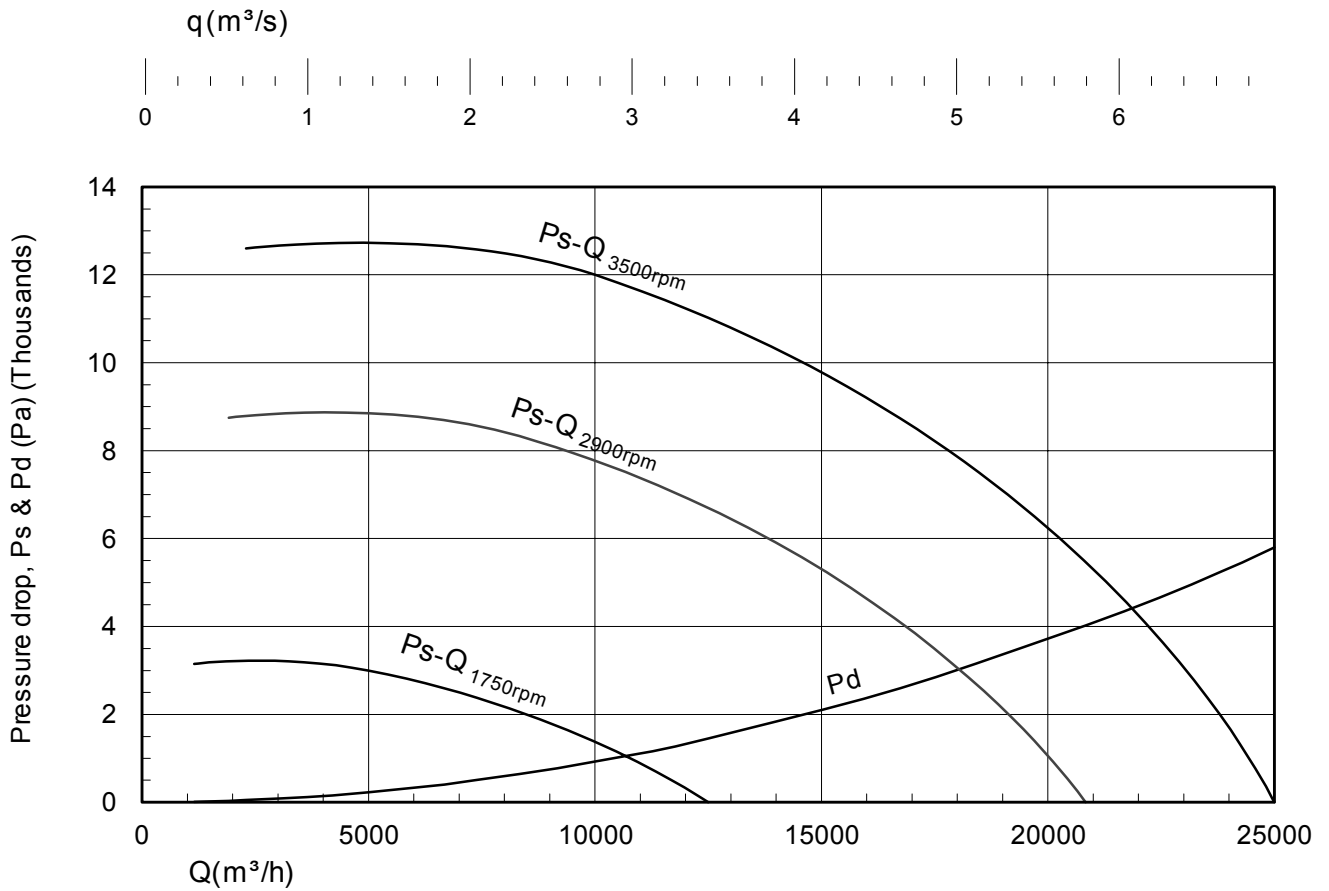
**NYBORG AS**  
N-6230 Sykkylven, Norway  
tel.: +47 70 25 40 80  
fax: +47 70 25 29 08  
office@nyborgfan.com  
www.nyborgfan.com

**HSV 300 B**



# HIGH PRESSURE CENTR. FAN PERFORMANCE DATA

**HSV 300 B**  
Imp: B9x720x75



Hsv01-17



**NYBORG - MAWENT**

**NYBORG-MAWENT S.A.**  
ul. Ciepla 6, 82-200 Malbork  
tel.: +48 55 646 63 00  
fax: +48 55 646 63 09  
office@nyborg-mawent.com  
www.nyborg-mawent.com



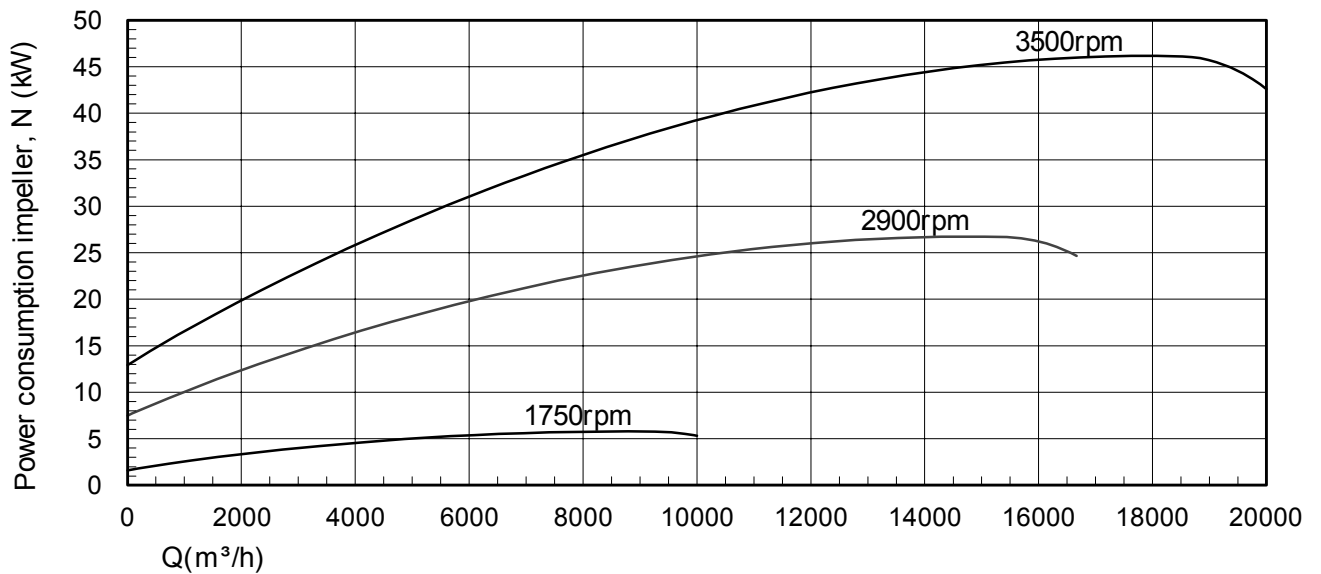
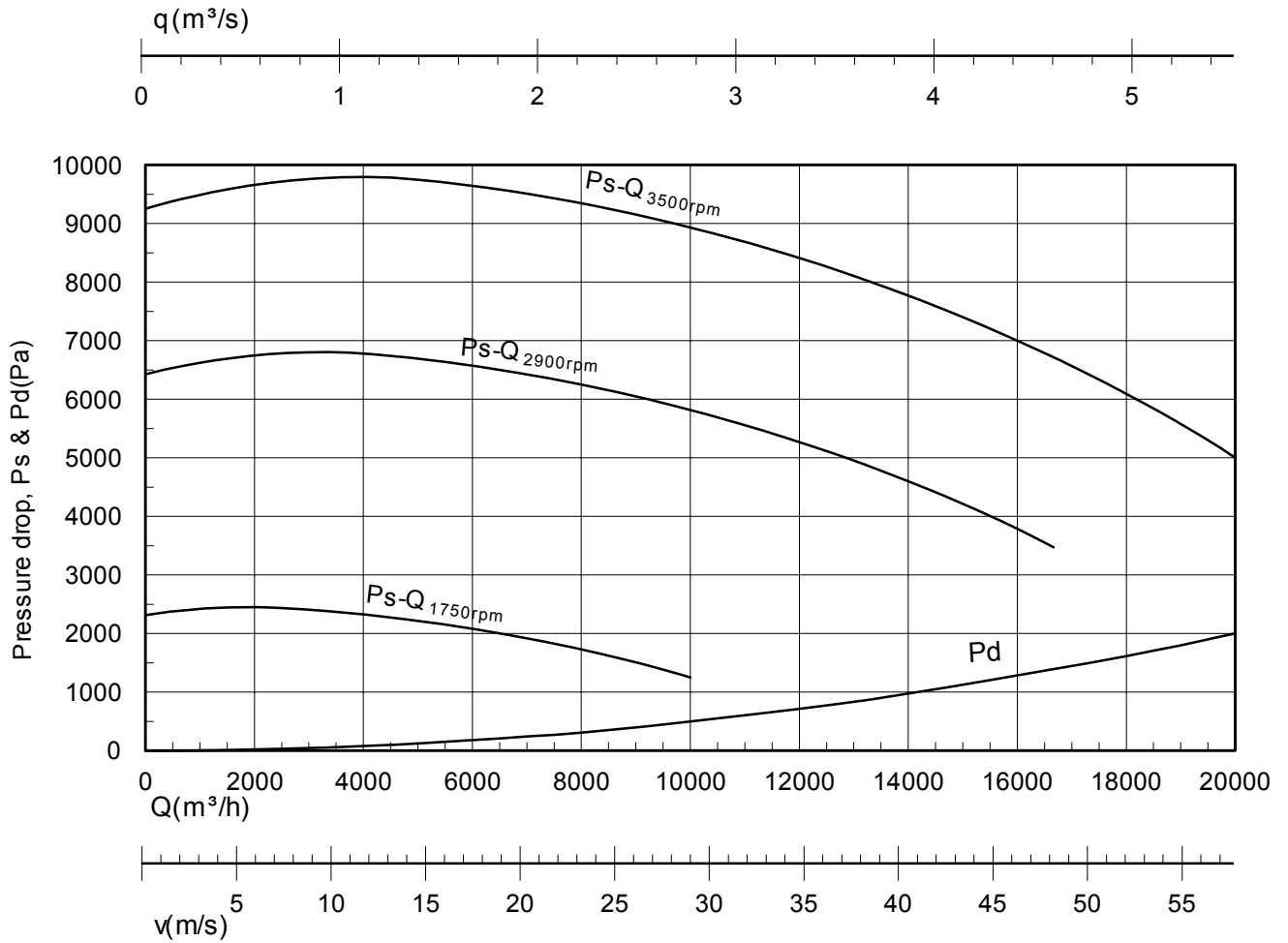
**NYBORG AS**  
N-6230 Sykkylven, Norway  
tel.: +47 70 25 40 80  
fax: +47 70 25 29 08  
office@nyborgfan.com  
www.nyborgfan.com

**HSV 300 B**



# HIGH PRESSURE CENTR. FAN PERFORMANCE DATA

**HSV 350 B**  
Imp: B9x700x80



hsv01-09



**NYBORG - MAWENT**

**NYBORG-MAWENT S.A.**  
ul. Ciepla 6, 82-200 Malbork  
tel.: +48 55 646 63 00  
fax: +48 55 646 63 09  
office@nyborg-mawent.com  
www.nyborg-mawent.com



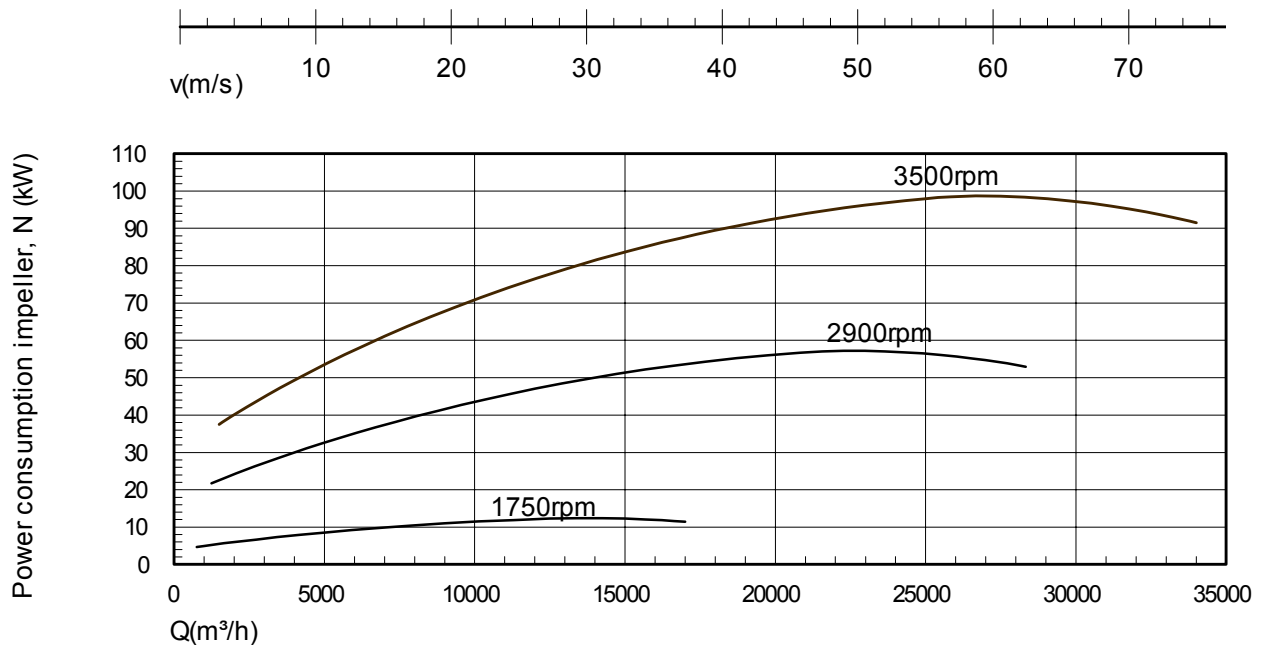
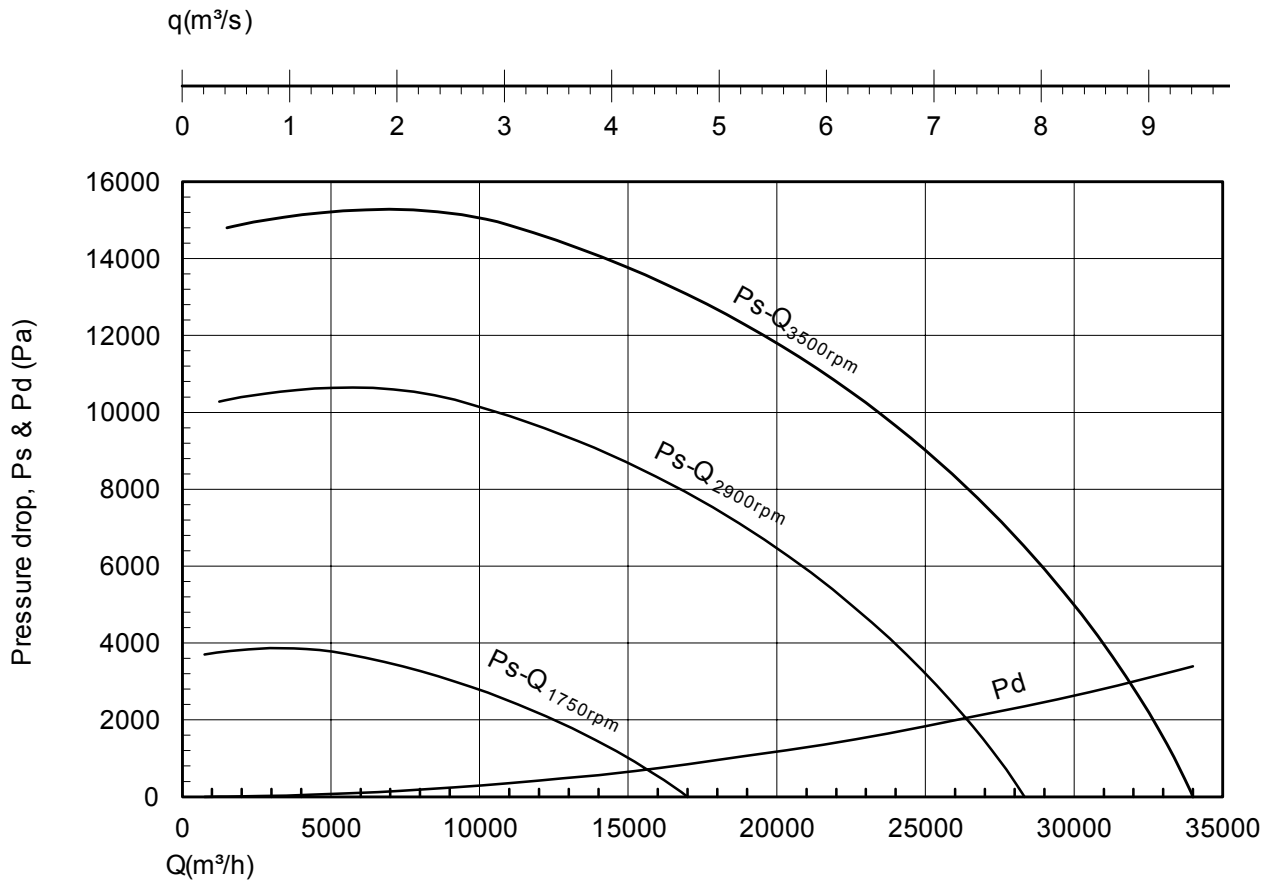
**NYBORG AS**  
N-6230 Sykkylven, Norway  
tel.: +47 70 25 40 80  
fax: +47 70 25 29 08  
office@nyborgfan.com  
www.nyborgfan.com

**HSV 350 B**



# HIGH PRESSURE CENTR. FAN PERFORMANCE DATA

**HSV 400 B**  
Imp: B9x800x95



HSV.PRS-11



**NYBORG - MAWENT**

**NYBORG-MAWENT S.A.**  
ul. Ciepla 6, 82-200 Malbork  
tel.: +48 55 646 63 00  
fax: +48 55 646 63 09  
office@nyborg-mawent.com  
www.nyborg-mawent.com



**NYBORG AS**  
N-6230 Sykkylven, Norway  
tel.: +47 70 25 40 80  
fax: +47 70 25 29 08  
office@nyborgfan.com  
www.nyborgfan.com

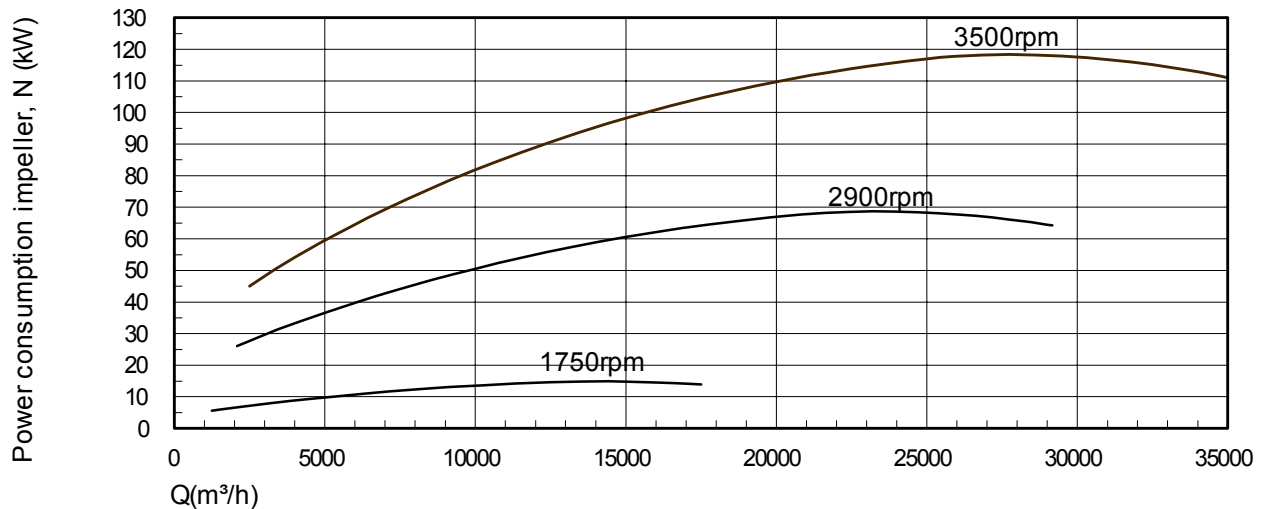
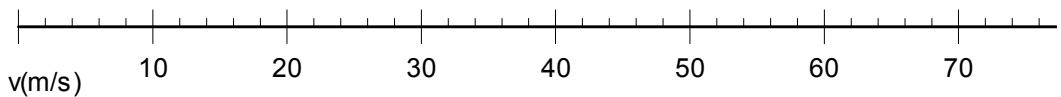
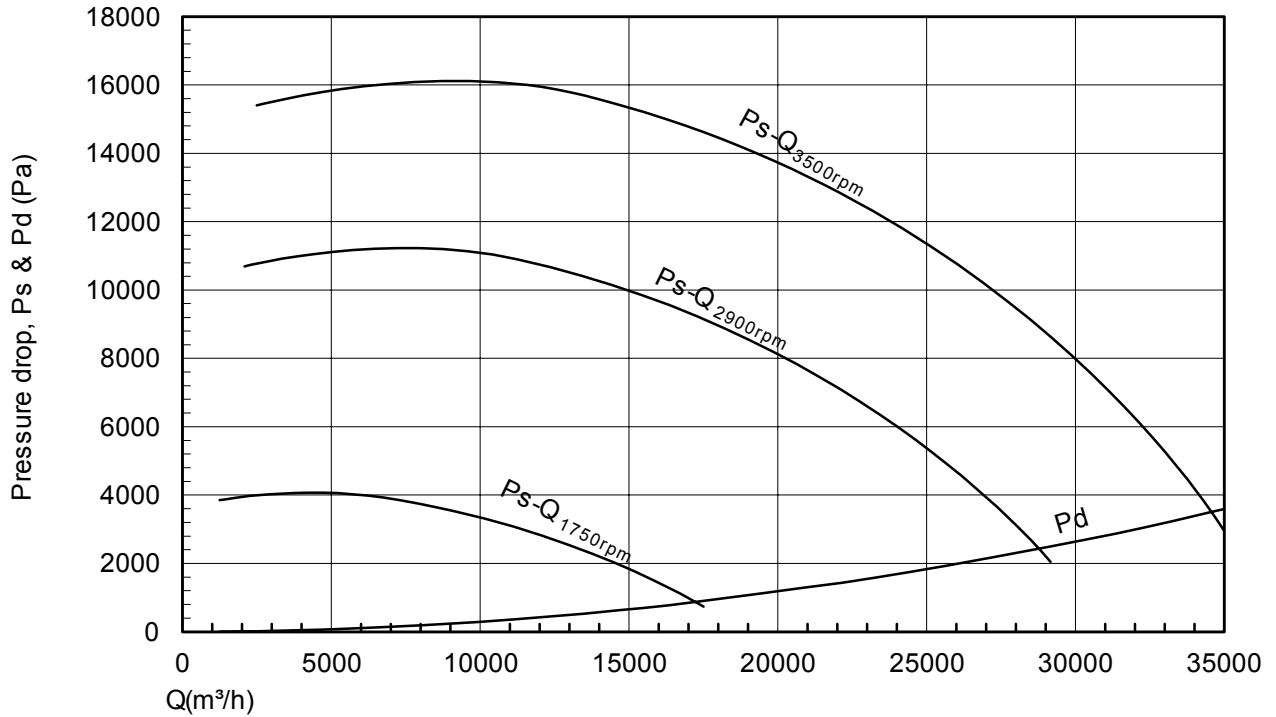
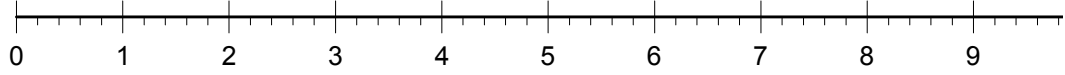
**HSV 400 B**



# HIGH PRESSURE CENTR. FAN PERFORMANCE DATA

**HSV 400 B**  
Imp: B9x830x95

q(m³/s)



hsv01-10



**NYBORG - MAWENT**

**NYBORG-MAWENT S.A.**  
ul. Ciepla 6, 82-200 Malbork  
tel.: +48 55 646 63 00  
fax: +48 55 646 63 09  
office@nyborg-mawent.com  
www.nyborg-mawent.com



**NYBORG AS**  
N-6230 Sykkylven, Norway  
tel.: +47 70 25 40 80  
fax: +47 70 25 29 08  
office@nyborgfan.com  
www.nyborgfan.com

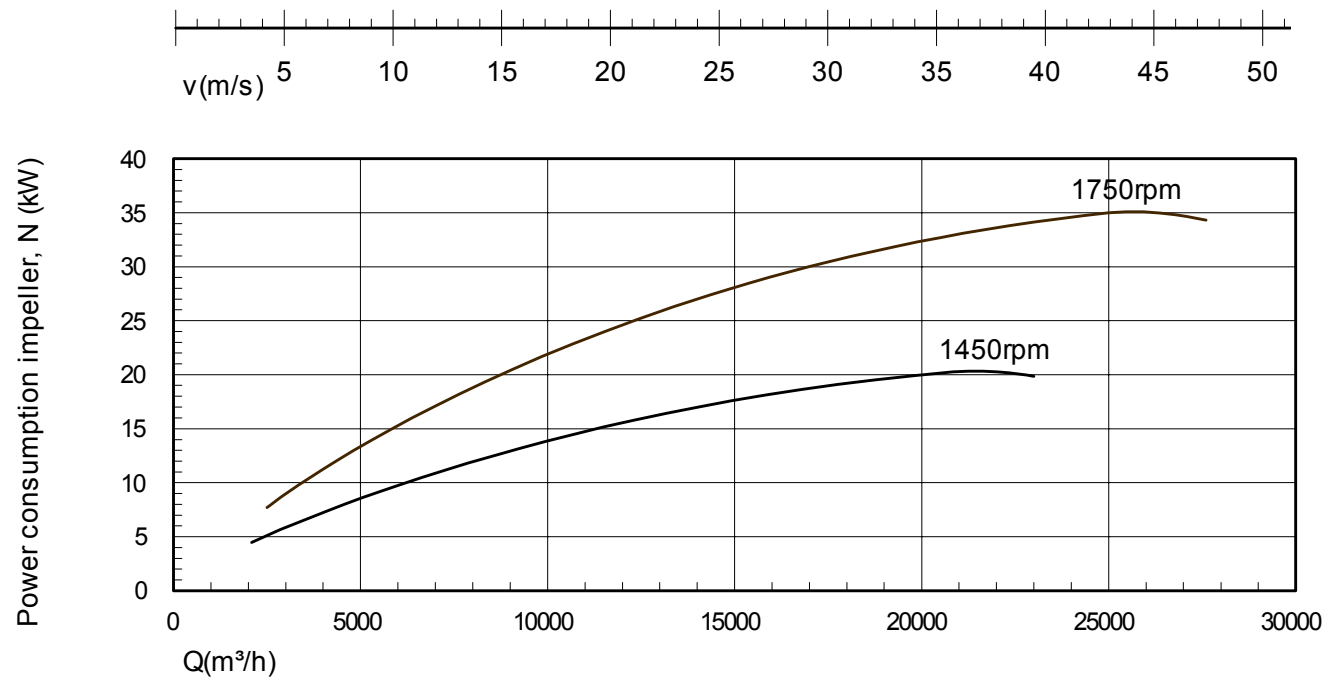
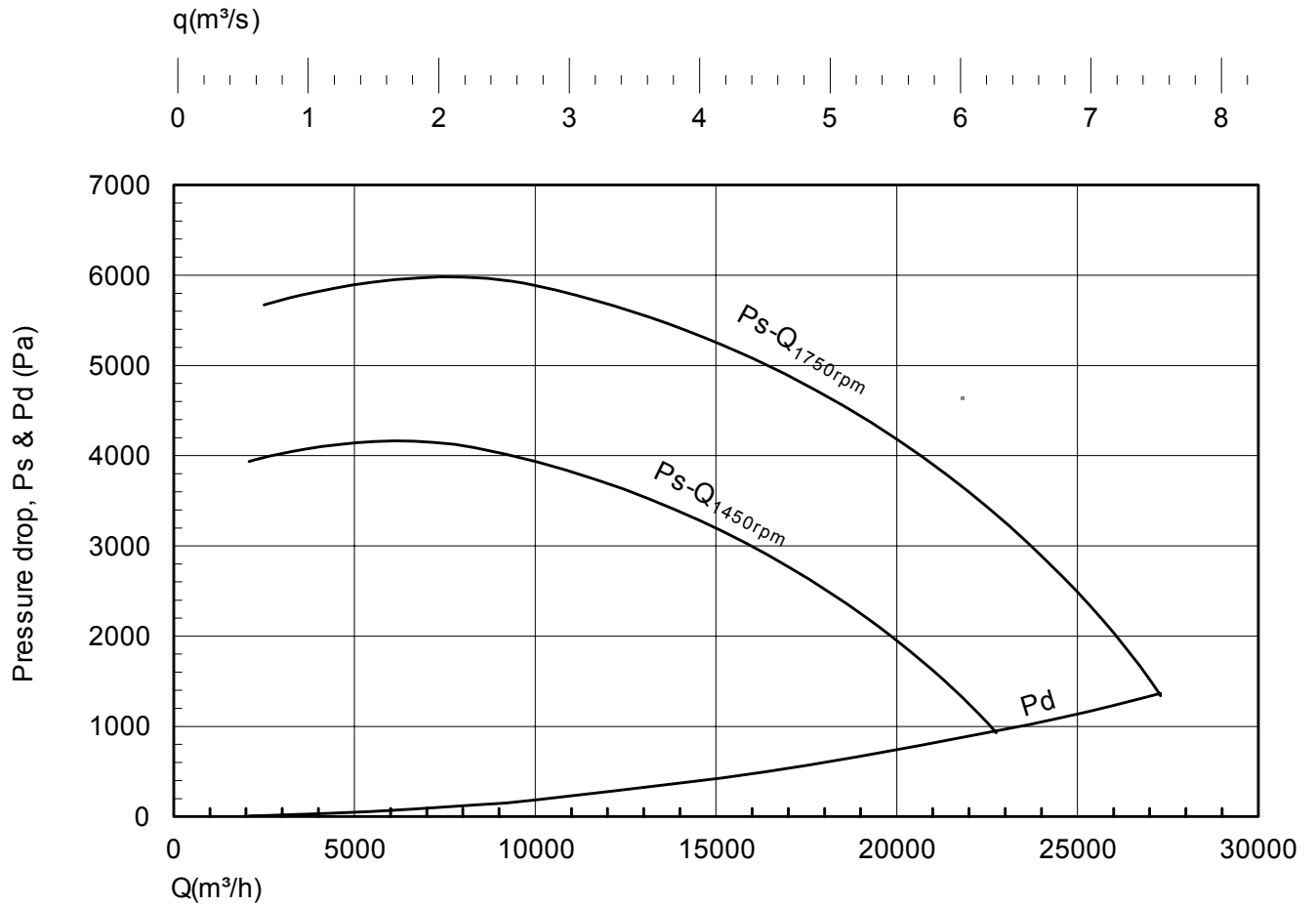
**HSV 400 B**



# HIGH PRESSURE CENTR. FAN PERFORMANCE DATA

## HSV 450 B

Imp: B12x1000x95



hsv01-12



**NYBORG - MAWENT**

**NYBORG-MAWENT S.A.**  
ul. Ciepla 6, 82-200 Malbork  
tel.: +48 55 646 63 00  
fax: +48 55 646 63 09  
office@nyborg-mawent.com  
www.nyborg-mawent.com



**NYBORG AS**  
N-6230 Sykkylven, Norway  
tel.: +47 70 25 40 80  
fax: +47 70 25 29 08  
office@nyborgfan.com  
www.nyborgfan.com

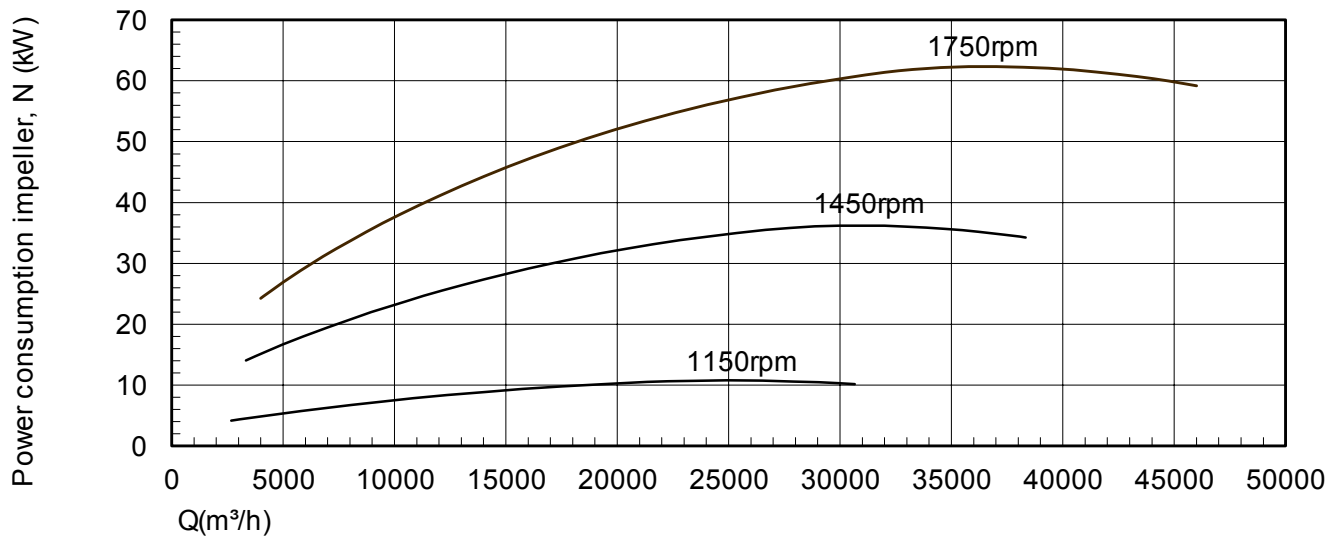
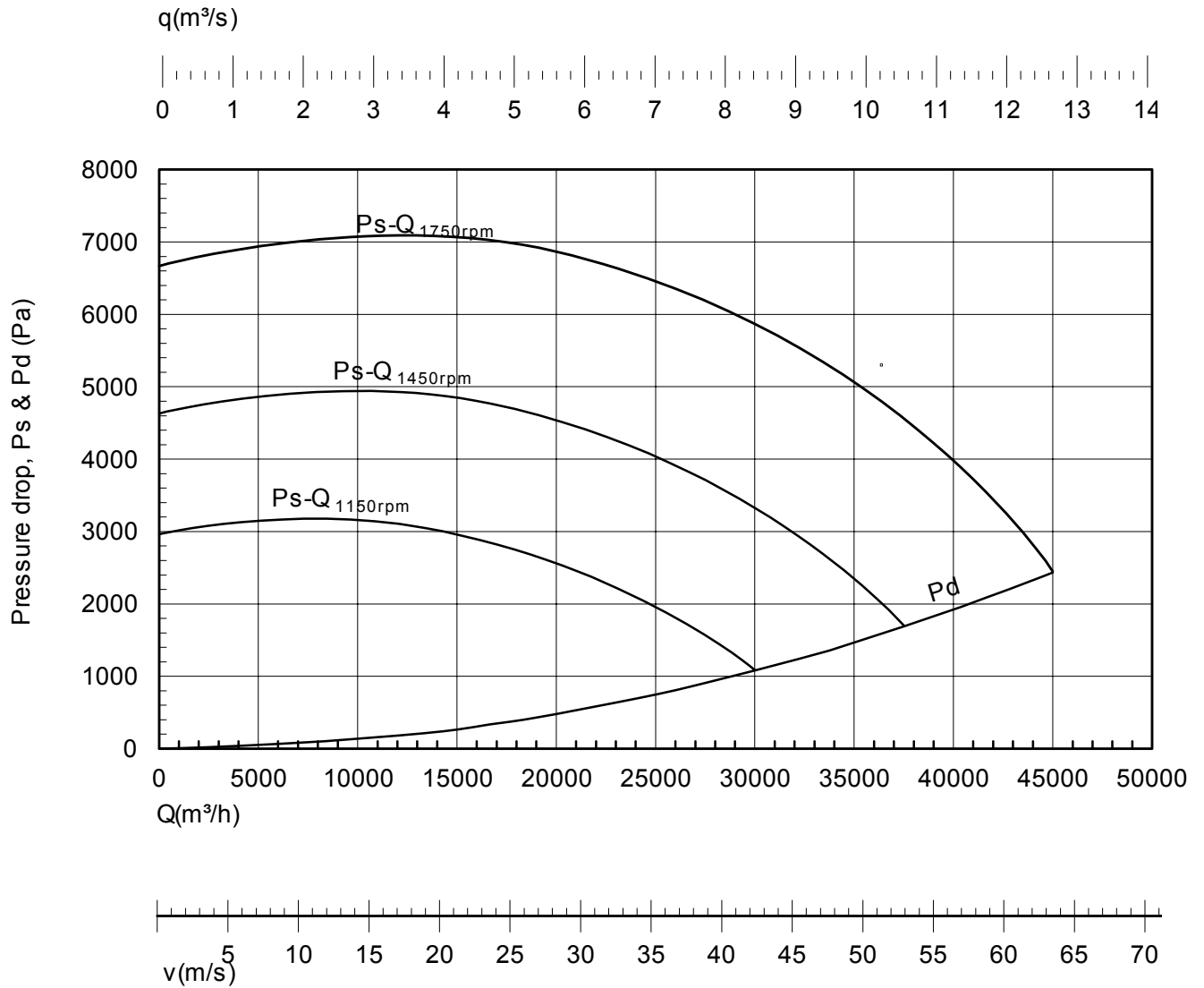
## HSV 450 B



# HIGH PRESSURE CENTR. FAN PERFORMANCE DATA

**HSV 500 B**

Imp: B12x1100x125



hsv01-13



**NYBORG - MAWENT**

**NYBORG-MAWENT S.A.**  
ul. Ciepła 6, 82-200 Malbork  
tel.: +48 55 646 63 00  
fax: +48 55 646 63 09  
office@nyborg-mawent.com  
www.nyborg-mawent.com



**NYBORG AS**

N-6230 Sykkylven, Norway  
tel.: +47 70 25 40 80  
fax: +47 70 25 29 08  
office@nyborgfan.com  
www.nyborgfan.com

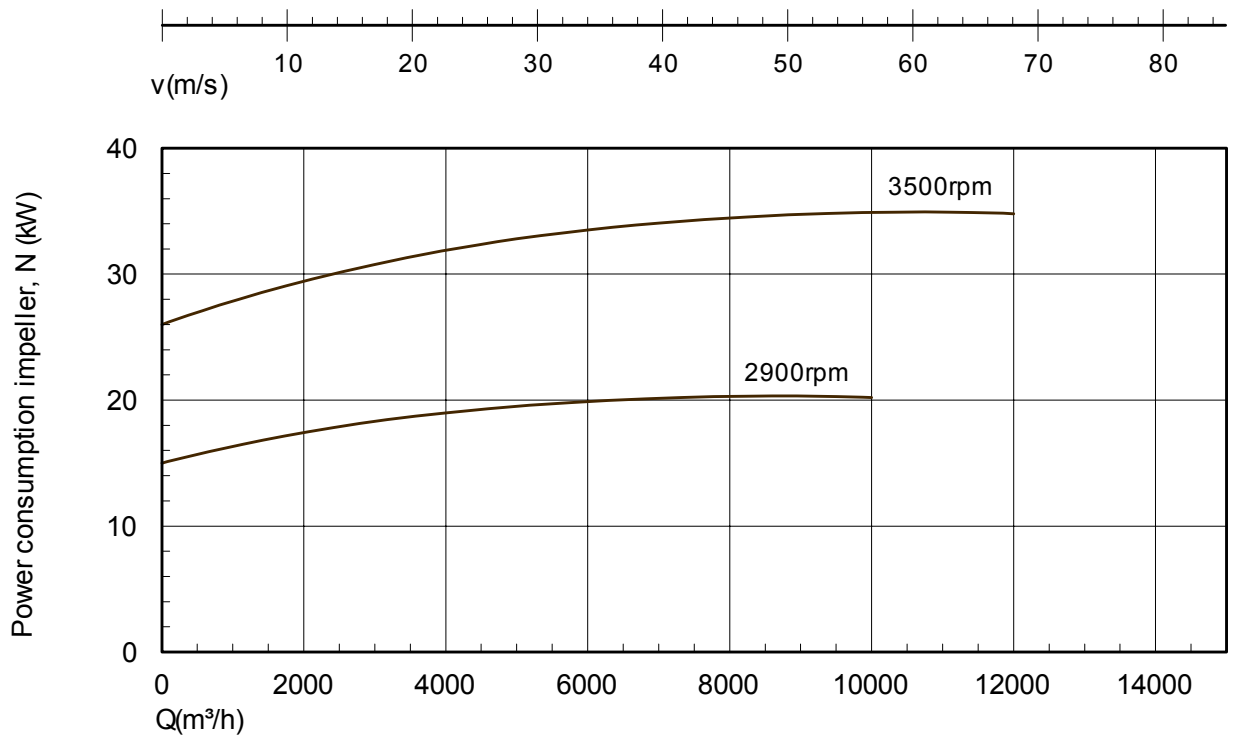
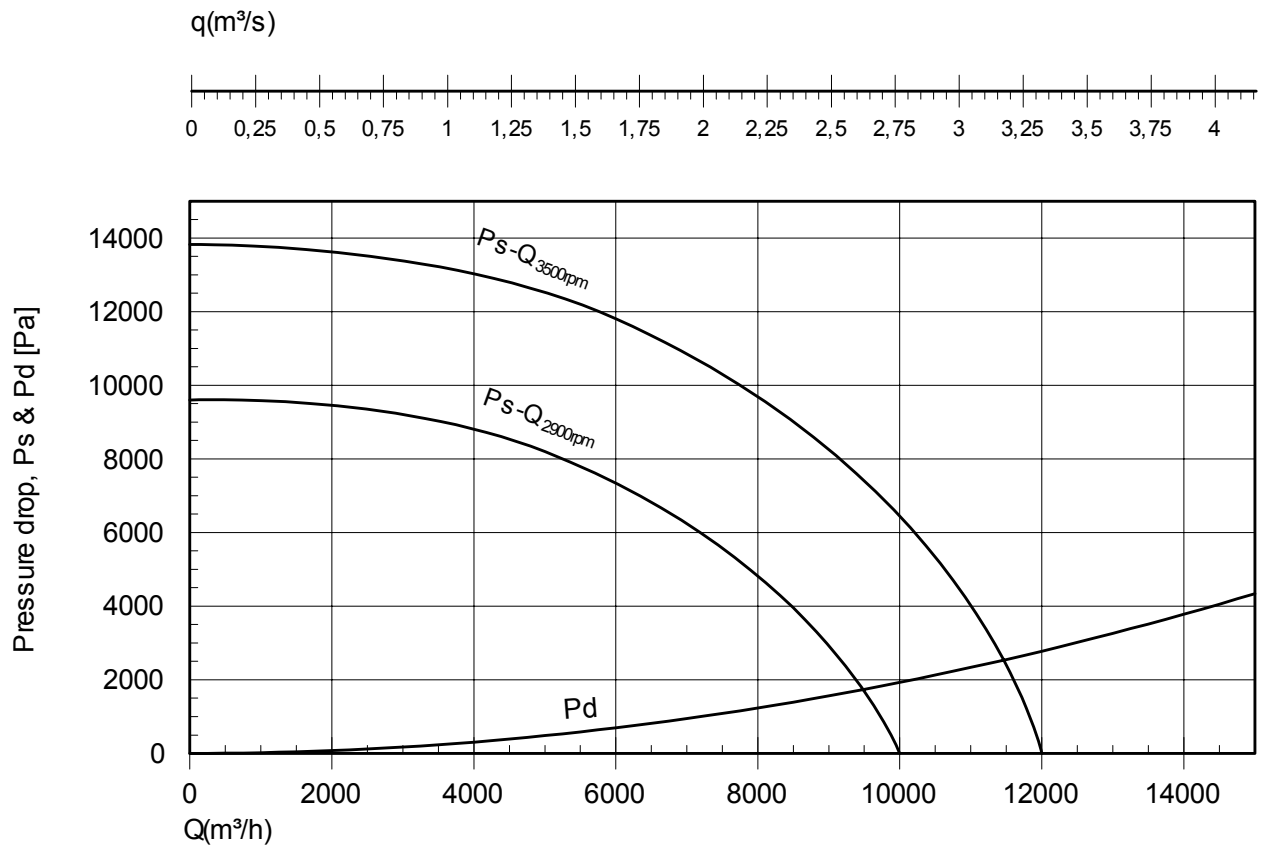
**HSV 500 B**





# HIGH PRESSURE CENTR. FAN PERFORMANCE DATA

**HRV 250 B**  
Imp: B9x720x35



hrv2-2



**NYBORG - MAWENT**

**NYBORG-MAWENT S.A.**  
ul. Ciepla 6, 82-200 Malbork  
tel.: +48 55 646 63 00  
fax: +48 55 646 63 09  
office@nyborg-mawent.com  
www.nyborg-mawent.com



**NYBORG AS**  
N-6230 Sykkylven, Norway  
tel.: +47 70 25 40 80  
fax: +47 70 25 29 08  
office@nyborgfan.com  
www.nyborgfan.com

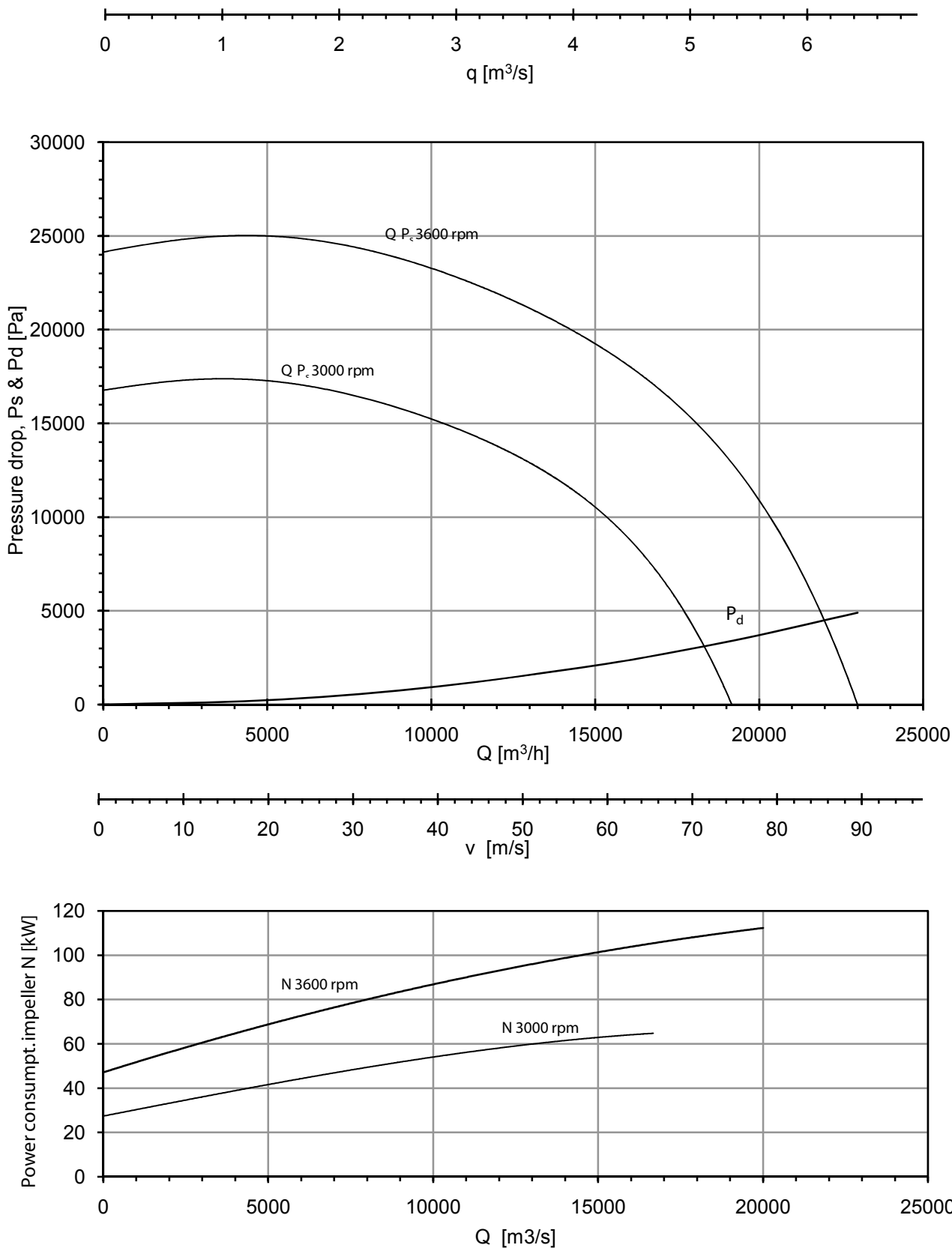
**HRV 250 B**



# NYBORG HIGH PRESS. CENTR. FAN PERFORMANCE DATA

**HRV 300 B**

Imp: B9x975x35



hsv01\_xls-10  
18.02.2009-omk



**NYBORG-MAWENT S.A.**  
ul. Ciepla 6, 82-200 Malbork  
tel.: +48 55 646 63 00  
fax: +48 55 646 63 09  
office@nyborg-mawent.com  
www.nyborg-mawent.com



**NYBORG AS**  
N-6230 Sykkylven, Norway  
tel.: +47 70 25 40 80  
fax: +47 70 25 29 08  
office@nyborgfan.com  
www.nyborgfan.com

**HRV 300 B**