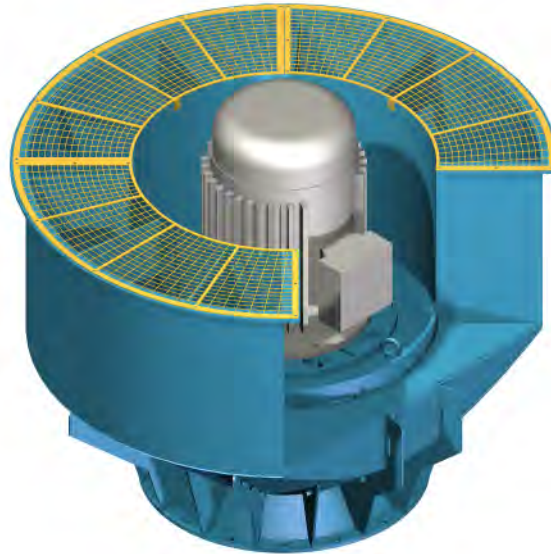




PROPELLER EXHAUST FAN FOR EXPLOSIVE FUMES

TYPE
PUV-D1RX



APPLICATIONS

Typical application for this fan is mechanical ventilation, extraction, in hazardous zones of cargo area and rooms onboard ships. Duc-top, above deck mounting.

From the Det Norske Veritas system requirements, mechanical ventilation in cargo area:

A 100 General.

109 Electric fan motors are not to be installed in ventilation ducts when the ship has to carry ammable products.

111 Ventilation outlets from gas-dangerous spaies are to discharge upwards in location at least 10m in the horizontal direction from ventilation intakes and openings for gas-safe spaces.

DESIGN

The PUV-D1RX is designed primary for ventilation, extraction, of pump-rooms and other places where explosive fumes occur. The fan is spark proof with a totally enclosed, natural cooled and ameproof electric motor.

Long experience has contributed to a simple construction, with only one rotating part in addition to the motor itself. The propeller is mounted directly to the motor shaft, thus making it one unit with the motor ange, which can be lifted out for inspection.

EXECUTION

The propeller, fan casing, motor ange and guiding plate are made of salt- and ammonia resistant aluminium. The propeller is aerodynamically shaped and balanced with various pitch angles to suit di erent pressures and capacities. The wire mesh guard is made of stainless steel.

Greasing-point for the gas tight assembly is provided on top of motor ange.

The PUV-D1RX can be delivered in the range **from size no 260 to size no 1100.**

ELECTRIC MORTOR

The motor is totally enclosed, natural cooled and ameproof, designed for above deck mounting. Test - and Ex certi cates are delivered with each motor.

CLASSIFICATION SOCIETIES

The fan satisfy the demands of the various classi cation societies.

ACCESSORIES

- Countra ange
- Cable gland
- Equipment for vibration- and temperature monitoring
- Spare parts for gas tight assembly
- Tools for mounting/demounting of impeller



NYBORG-MAWENT S.A.
ul. Ciepla 6, 82-200 Malbork
tel.: +48 55 646 63 00
fax: +48 55 646 63 09
office@nyborg-mawent.com
www.nyborg-mawent.com

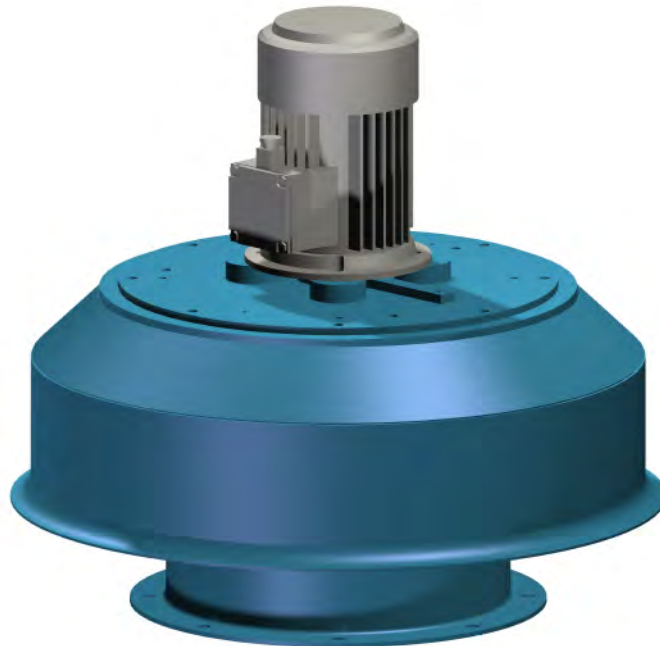


NYBORG AS
N-6230 Sykkylven, Norway
tel.: +47 70 25 40 80
fax: +47 70 25 29 08
office@nyborgfan.com
www.nyborgfan.com



PUMP ROOM FAN FOR EXPLOSIVE FUMES

TYPE
PPV-D10X



APPLICATIONS

Typical application for this fan is mechanical ventilation of hazardous zones and rooms onboard ships. Duct-top, above deck mounting.

DESIGN

The PPV-D10X is designed primary for ventilation, both supply and extraction, of pump rooms and other places where explosive fumes occur. The fan is spark proof with a totally enclosed, natural cooled and ameproof electric motor.

Long experience has contributed to a simple construction, with only one rotating part in addition to the motor itself. The propeller is mounted directly to the motor shaft, thus making it one unit with the motor, which can be lifted out for inspection.

EXECUTION

Fan casing consists of welded steel plates of heavy duty design and includes guiding vanes for the propeller.

The propeller and guiding plate are made of salt- and ammonia-resistant aluminium, aerodynamically shaped and balanced.

The wire mesh guard is made of stainless steel.

Greasing-point for the gas tight assembly is provided on top of the cowl.

The PPV-D10X can be delivered in the range **from size no 260 to size no 1250.**

ELECTRIC MOTOR

The motor is totally enclosed, natural cooled and ameproof, designed for above deck mounting. Test - and Ex certificates are delivered with each motor.

CLASSIFICATION SOCIETIES

The fan satisfy the demands of the various classification societies.

ACCESSORIES

- Counter angle



NYBORG - MAWENT

NYBORG-MAWENT S.A.
ul. Ciepla 6, 82-200 Malbork
tel.: +48 55 646 63 00
fax: +48 55 646 63 09
office@nyborg-mawent.com
www.nyborg-mawent.com

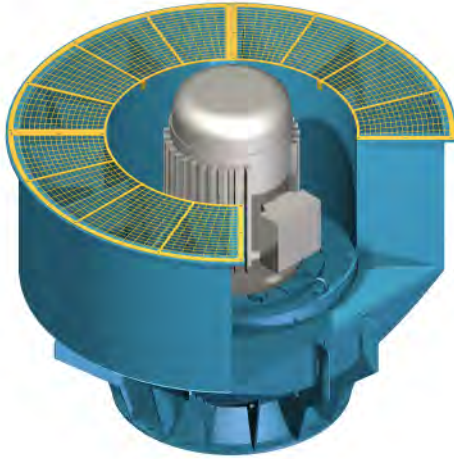


NYBORG AS
N-6230 Sykkylven, Norway
tel.: +47 70 25 40 80
fax: +47 70 25 29 08
office@nyborgfan.com
www.nyborgfan.com

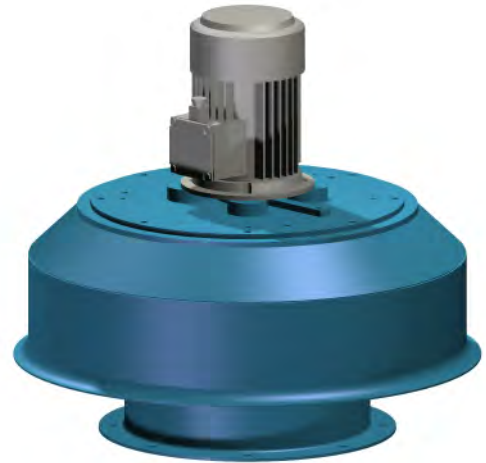


EX PROOF FANS for Hazardous Area

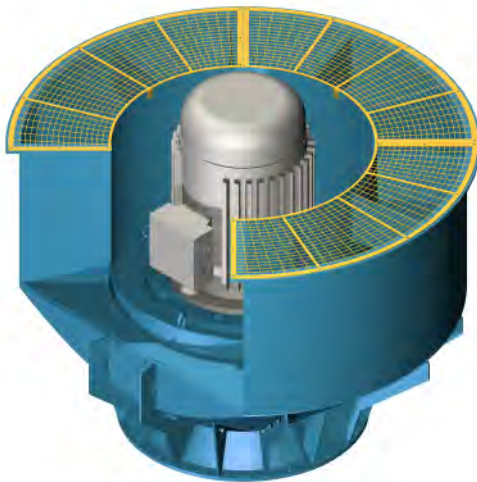
PUV - D1RX



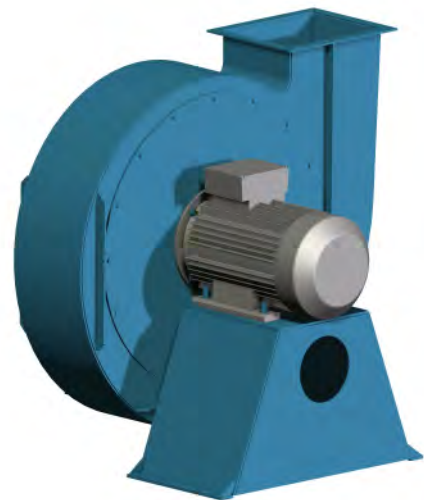
PPV - D10X



SUV - B1RX



HSV - B1(AFX)



NYBORG-MAWENT S.A.
ul. Ciepła 6, 82-200 Malbork
tel.: +48 55 646 63 00
fax: +48 55 646 63 09
office@nyborg-mawent.com
www.nyborg-mawent.com

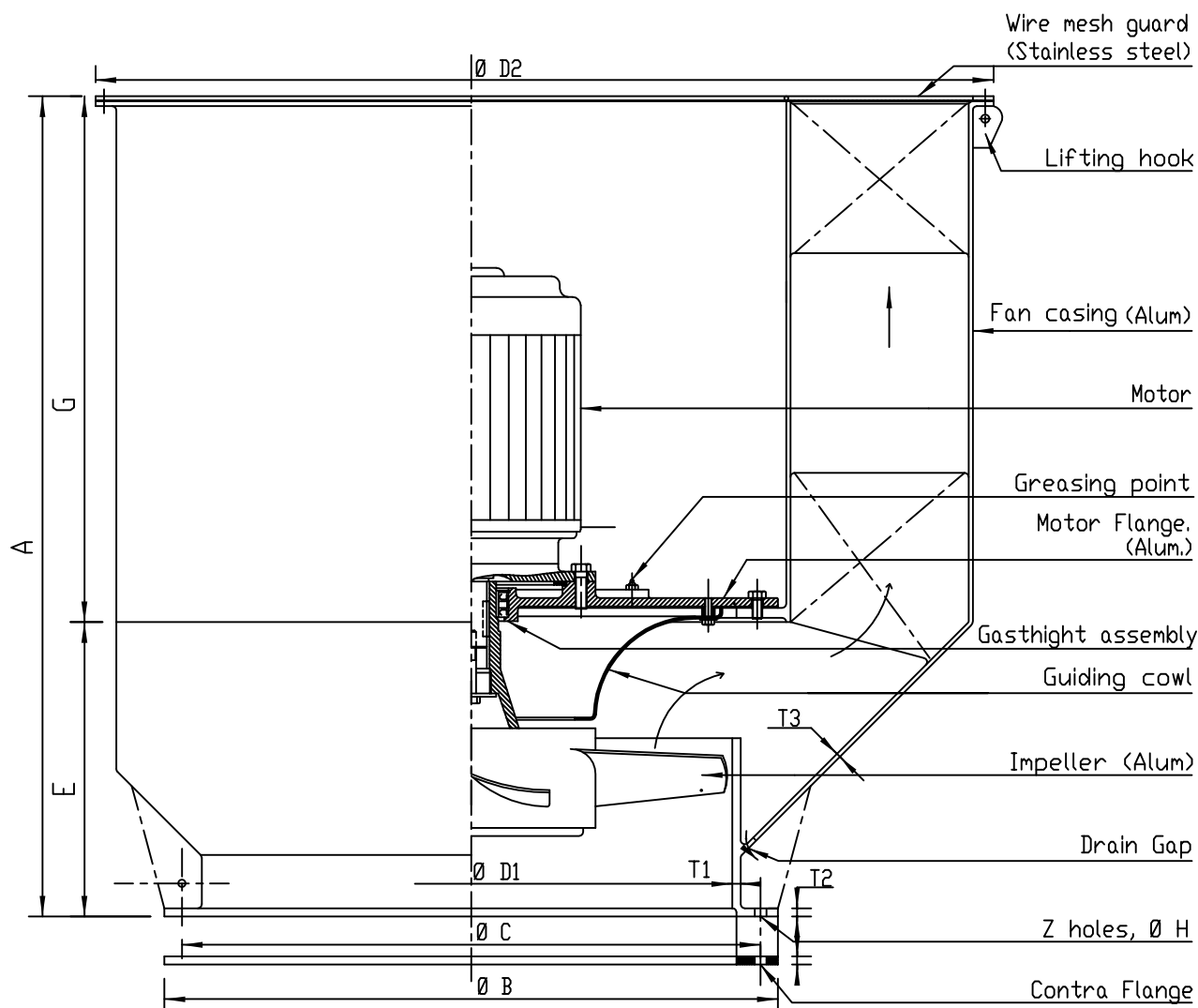


NYBORG AS
N-6230 Sykkylven, Norway
tel.: +47 70 25 40 80
fax: +47 70 25 29 08
office@nyborgfan.com
www.nyborgfan.com



Dimension drawing

PUV -
D1RX



Size	A	ØB	ØC	D1	D2	E	G	T1	T2	T3	Z	H	Weight fan [kg]
260	600	337	310	260	650	255	345	8	10	4	8	12	32
300	600	387	360	300	680	255	345	8	10	4	8	14	36
350	650	437	405	350	800	300	350	8	10	4	8	14	43
400	730	488	460	400	850	310	420	8	10	4	12	14	54
450	850	548	510	450	960	335	515	8	10	4	12	14	65
500	900	598	560	500	1010	380	520	8	10	4	12	14	76
550	920	660	630	550	1160	400	520	10	10	4	16	14	
630	1050	740	698	630	1250	410	640	10	10	5	16	14	124
700	1150	810	775	700	1460	510	640	10	10	5	16	14	160
800	1180	912	870	800	1670	540	640	10	15	6	16	19	231
900	1380	1030	980	900	1870	615	765	10	15	6	16	19	312
1000	1470	1132	1080	1000	2070	705	765	10	15	6	20	19	

Dato: 09.01.04

Tegn.nr 4-1274

M.Berge



NYBORG-MAWENT S.A.
ul. Ciepła 6, 82-200 Malbork
tel.: +48 55 646 63 00
fax: +48 55 646 63 09
office@nyborg-mawent.com
www.nyborg-mawent.com



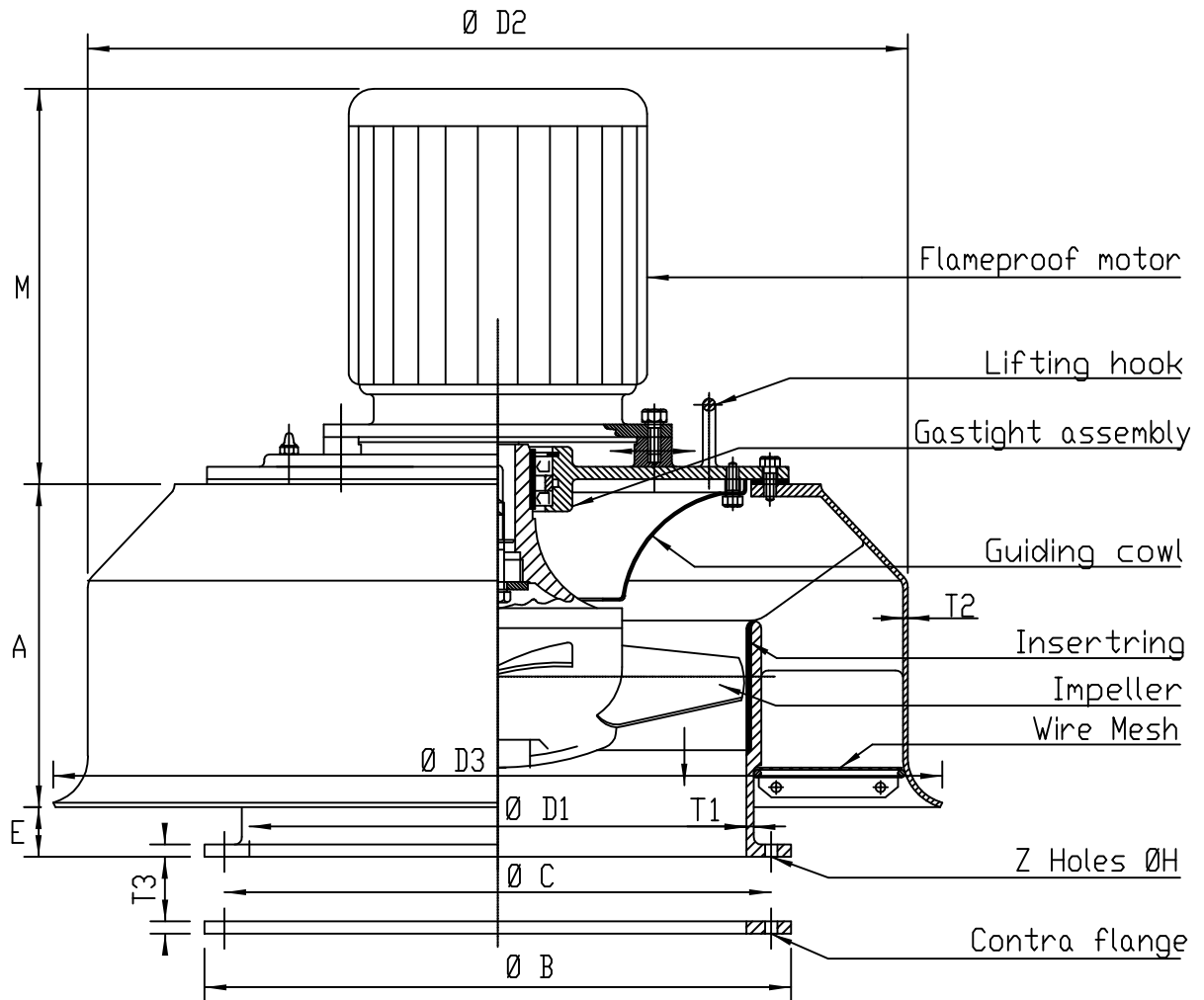
NYBORG AS
N-6230 Sykkylven, Norway
tel.: +47 70 25 40 80
fax: +47 70 25 29 08
office@nyborgfan.com
www.nyborgfan.com

PUV -
D1RX



Dimension drawing

PPV -
D10X



Size	A	ØB	ØC	Ø D1	Ø D2	Ø D3	E	T1	T2	T3	Z	H	Weight [kg] excl. motor
260	230	337	310	260	550	590	73	6	3	8	8	12	39
300	245	387	360	300	600	640	60	6	3	10	8	14	43
350	230	437	405	350	650	700	84	6	3	10	8	14	58
400	260	488	460	400	700	750	60	6	3	10	12	14	62
450	265	550	510	450	800	850	110	6	3	12	12	14	82
500	281	600	560	500	900	950	115	6	3	12	12	14	92
550	250	660	630	550	1000	1060	142	6	4	12	16	14	
630	352	740	698	630	1100	1160	150	6	4	12	16	14	163
700	447	810	775	700	1250	1300	135	6	4	12	16	14	227
800	470	912	870	800	1400	1480	135	6	5	12	16	19	300
900	505	1032	980	900	1600	1680	165	6	5	15	16	19	
1000	630	1232	1080	1000	1800	1900	178	6	5	15	20	19	
1250	750	1380	1320	1250	2250	2350	185	6	5	15	24	19	

Dato 08.07.97

Tegn.nr 4-1275

M.Berge



NYBORG-MAWENT S.A.
ul. Ciepła 6, 82-200 Malbork
tel.: +48 55 646 63 00
fax: +48 55 646 63 09
office@nyborg-mawent.com
www.nyborg-mawent.com

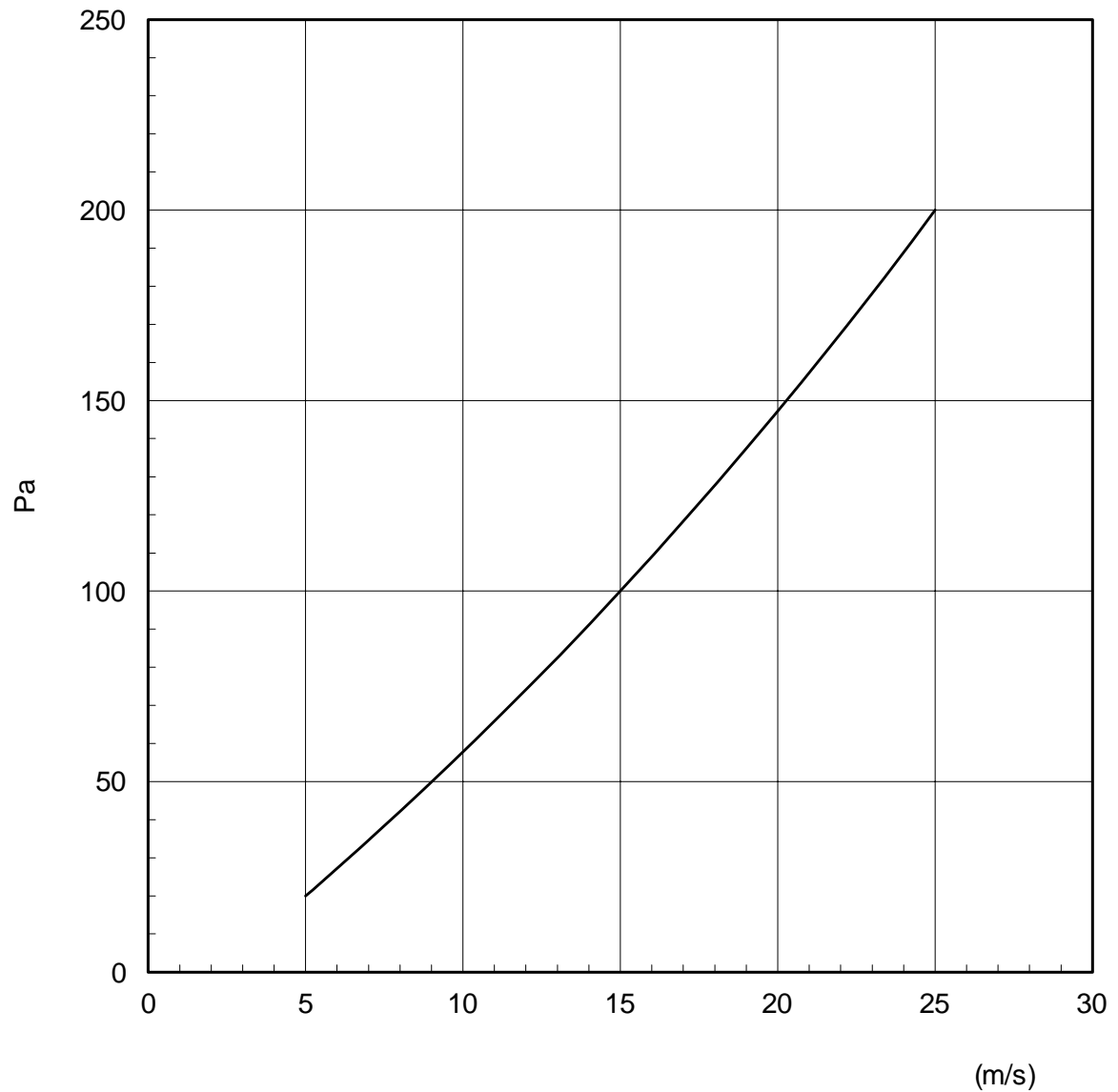


NYBORG AS
N-6230 Sykkylven, Norway
tel.: +47 70 25 40 80
fax: +47 70 25 29 08
office@nyborgfan.com
www.nyborgfan.com

PPV -
D10X



PRESSUREDROPT IN COWLS PTV-PPV



nyborg18.prs/4



NYBORG - MAWENT

NYBORG-MAWENT S.A.
ul. Ciepła 6, 82-200 Malbork
tel.: +48 55 646 63 00
fax: +48 55 646 63 09
office@nyborg-mawent.com
www.nyborg-mawent.com



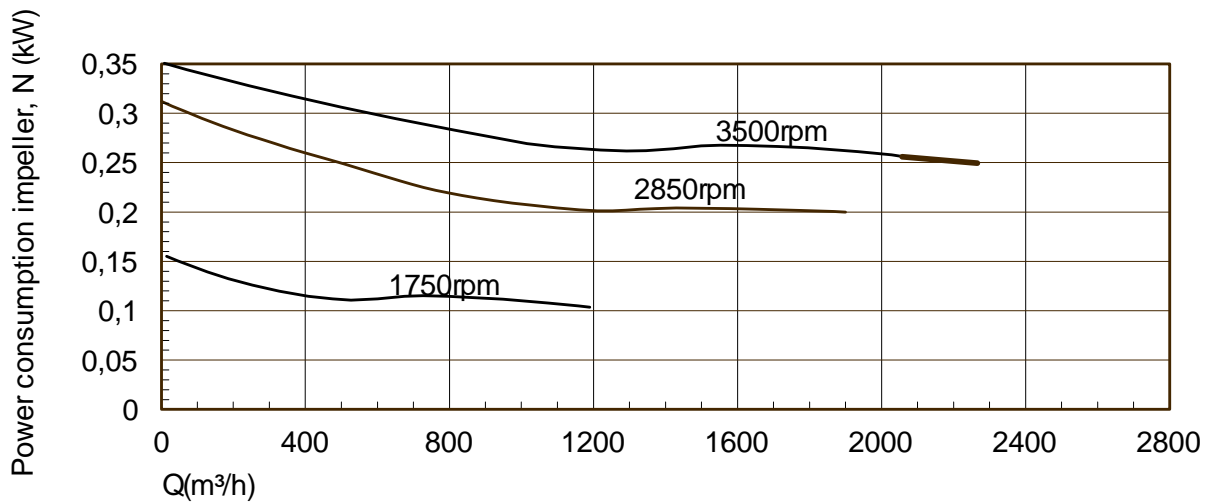
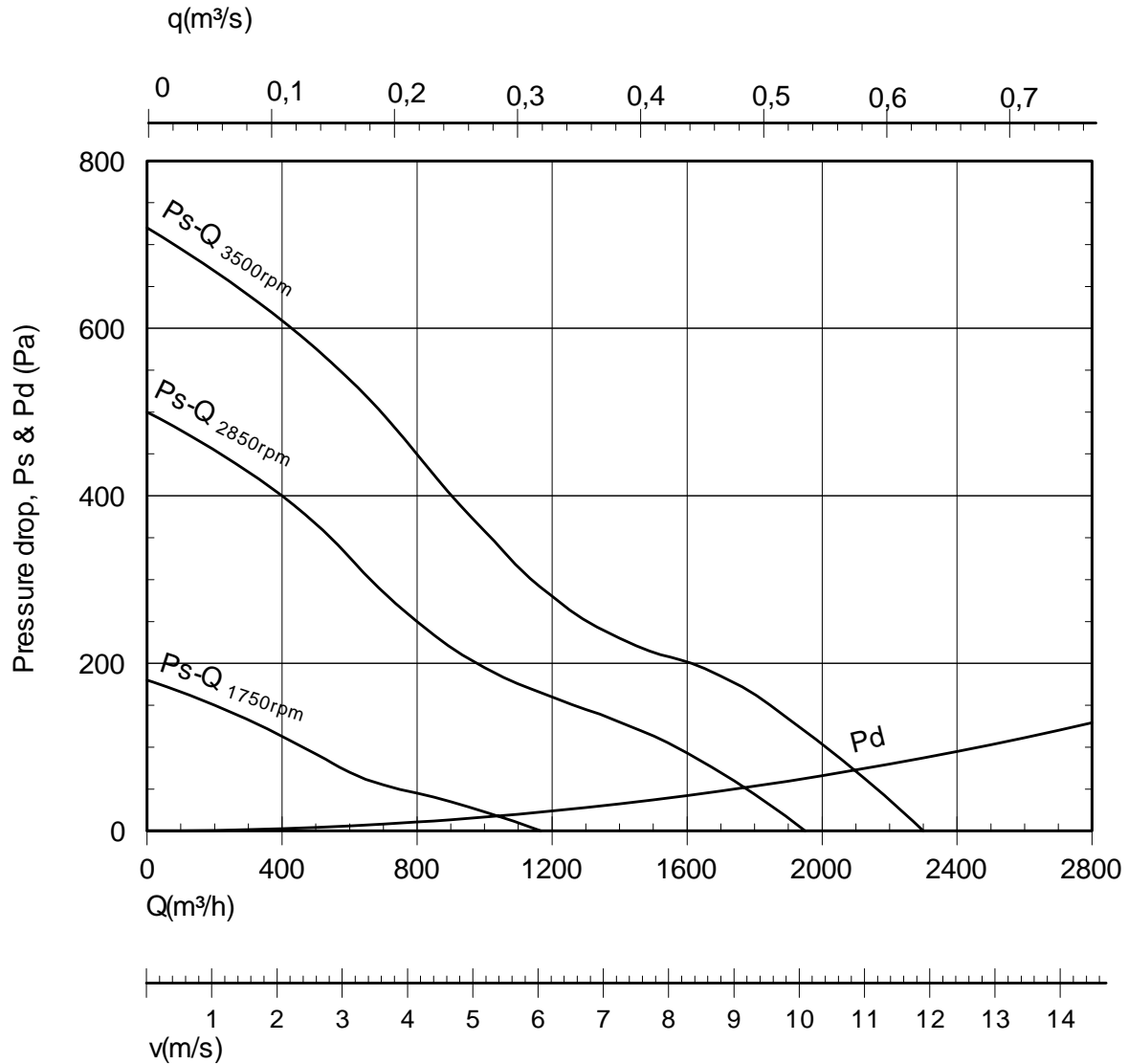
NYBORG AS
N-6230 Sykkylven, Norway
tel.: +47 70 25 40 80
fax: +47 70 25 29 08
office@nyborgfan.com
www.nyborgfan.com



NYBORG AXIAL FLOW FAN PERFORMANCE DATA

**PPV/PUV
260**

Imp: D5/30-20



Nyborg9.prs/1



NYBORG - MAWENT

NYBORG-MAWENT S.A.
ul. Ciepla 6, 82-200 Malbork
tel.: +48 55 646 63 00
fax: +48 55 646 63 09
office@nyborg-mawent.com
www.nyborg-mawent.com



NYBORG AS
N-6230 Sykkylven, Norway
tel.: +47 70 25 40 80
fax: +47 70 25 29 08
office@nyborgfan.com
www.nyborgfan.com

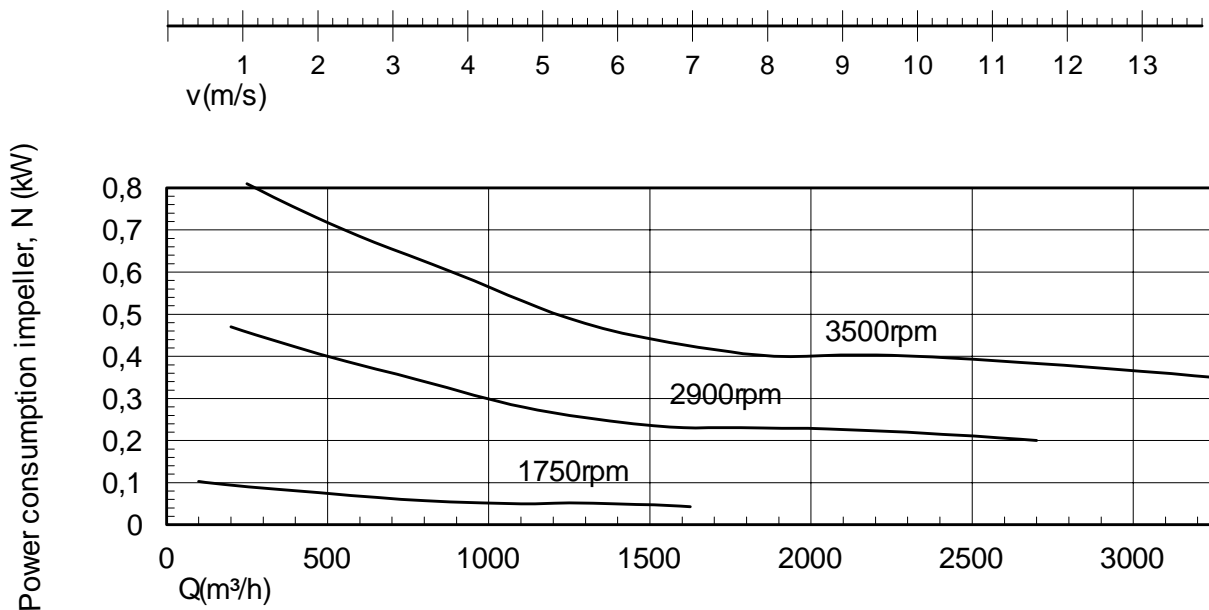
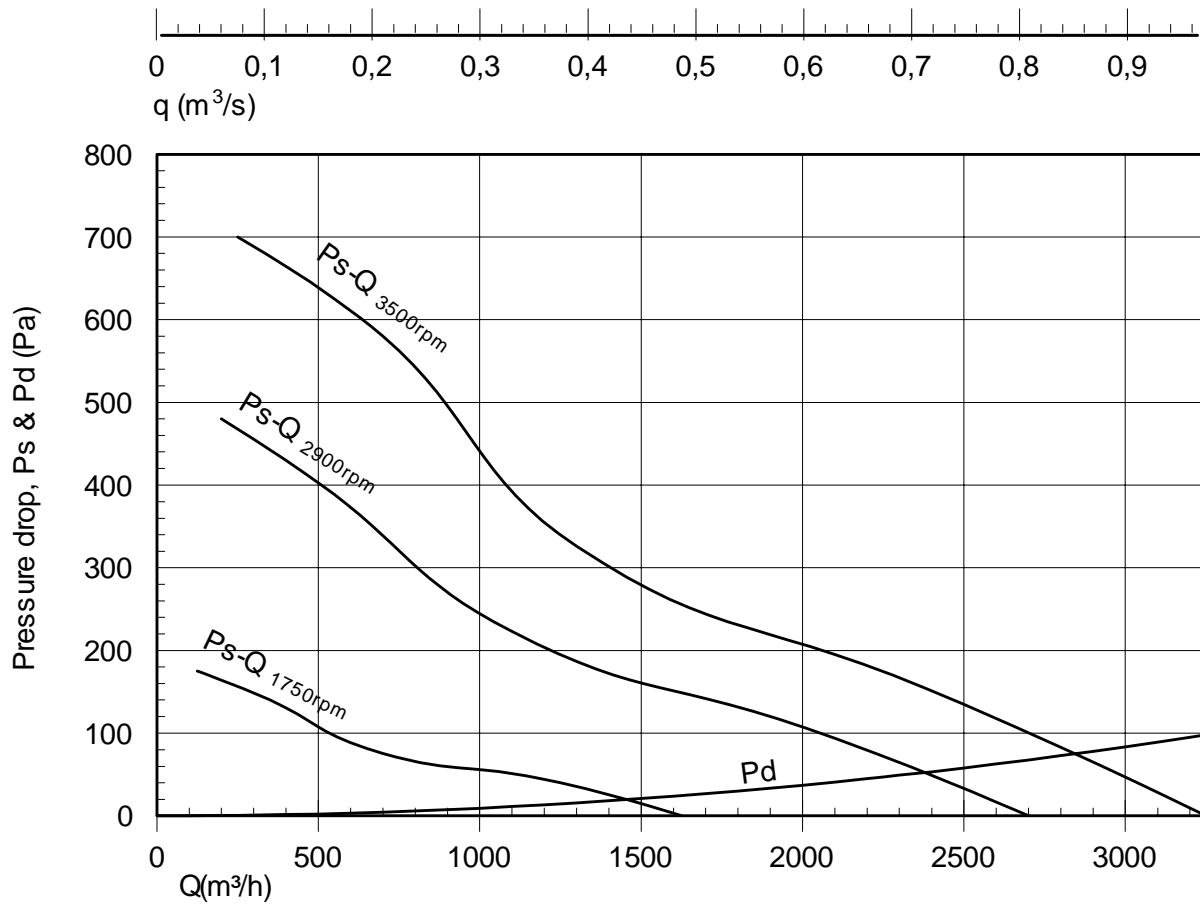
**PPV/PUV
260**



NYBORG AXIAL FLOW FAN PERFORMANCE DATA

**PPV/PUV
300**

Imp: D5/30-20



Nyborg9.prs/2



NYBORG - MAWENT

NYBORG-MAWENT S.A.
ul. Ciepła 6, 82-200 Malbork
tel.: +48 55 646 63 00
fax: +48 55 646 63 09
office@nyborg-mawent.com
www.nyborg-mawent.com



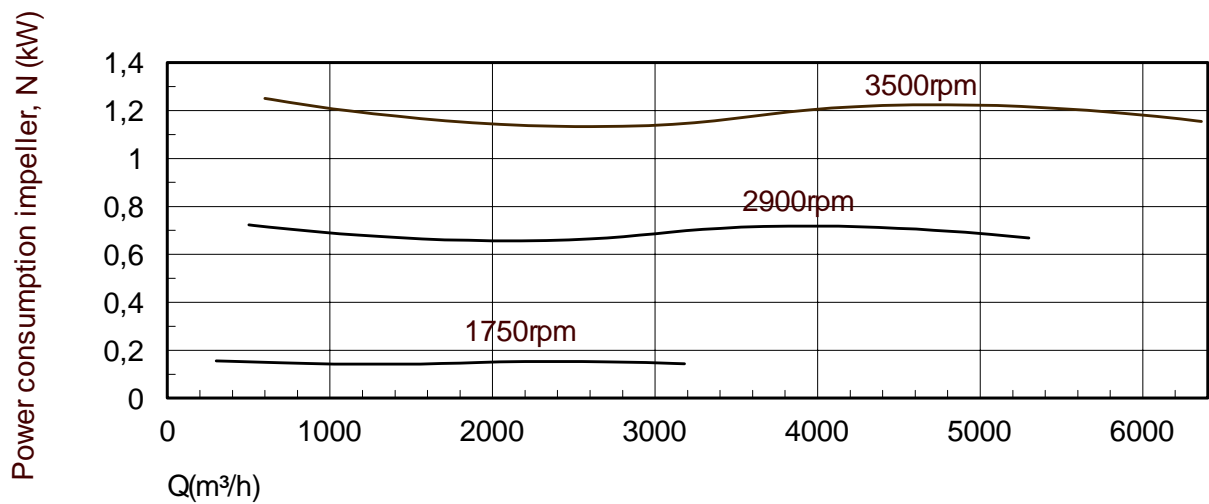
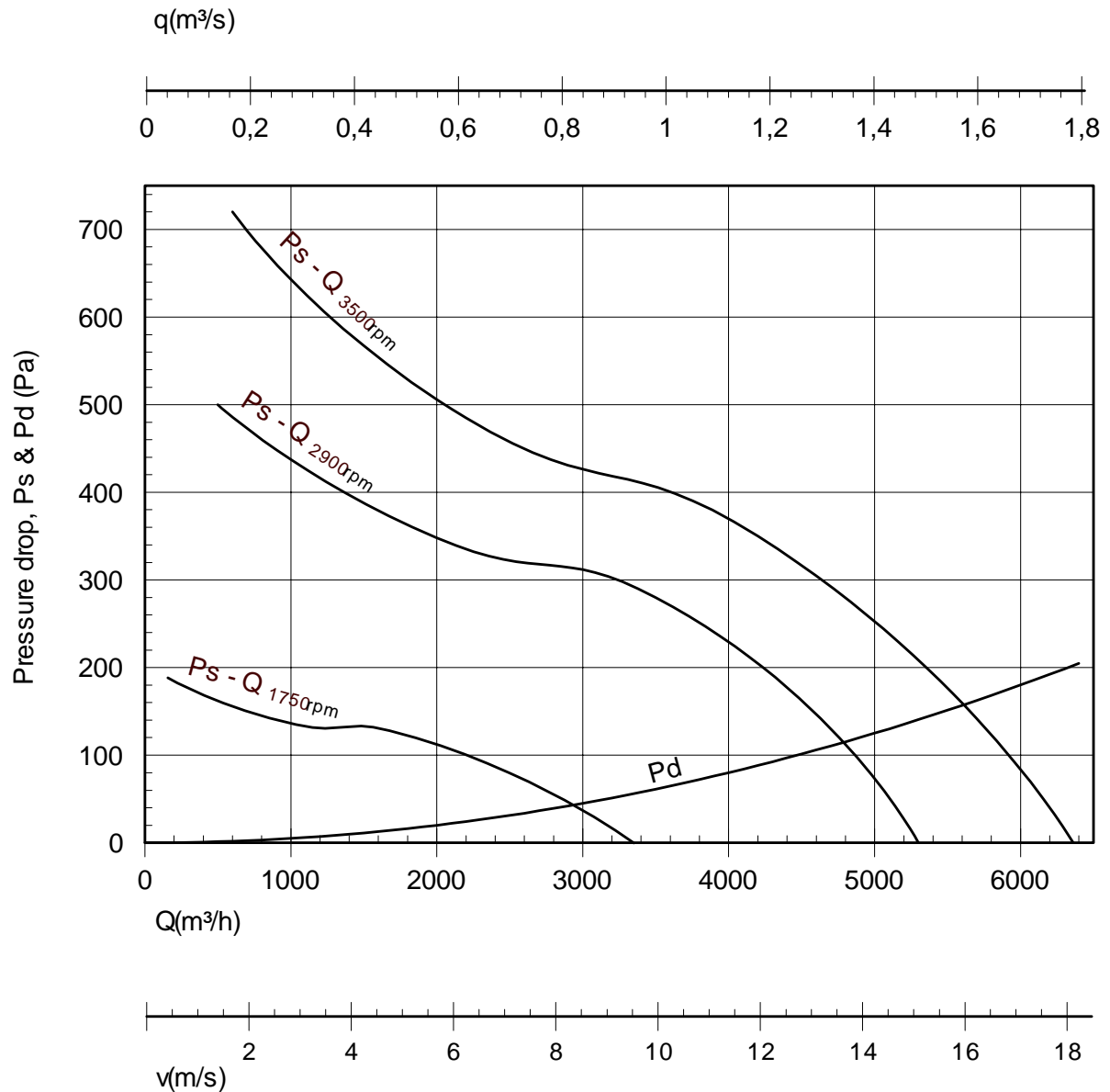
NYBORG AS
N-6230 Sykkylven, Norway
tel.: +47 70 25 40 80
fax: +47 70 25 29 08
office@nyborgfan.com
www.nyborgfan.com

**PPV/PUV
300**



NYBORG AXIAL FLOW FAN PERFORMANCE DATA

**PPV/PUV
350**
Imp: D5/30-20



Nyborg9.prs/3



NYBORG - MAWENT

NYBORG-MAWENT S.A.
ul. Ciepła 6, 82-200 Malbork
tel.: +48 55 646 63 00
fax: +48 55 646 63 09
office@nyborg-mawent.com
www.nyborg-mawent.com



NYBORG AS
N-6230 Sykkylven, Norway
tel.: +47 70 25 40 80
fax: +47 70 25 29 08
office@nyborgfan.com
www.nyborgfan.com

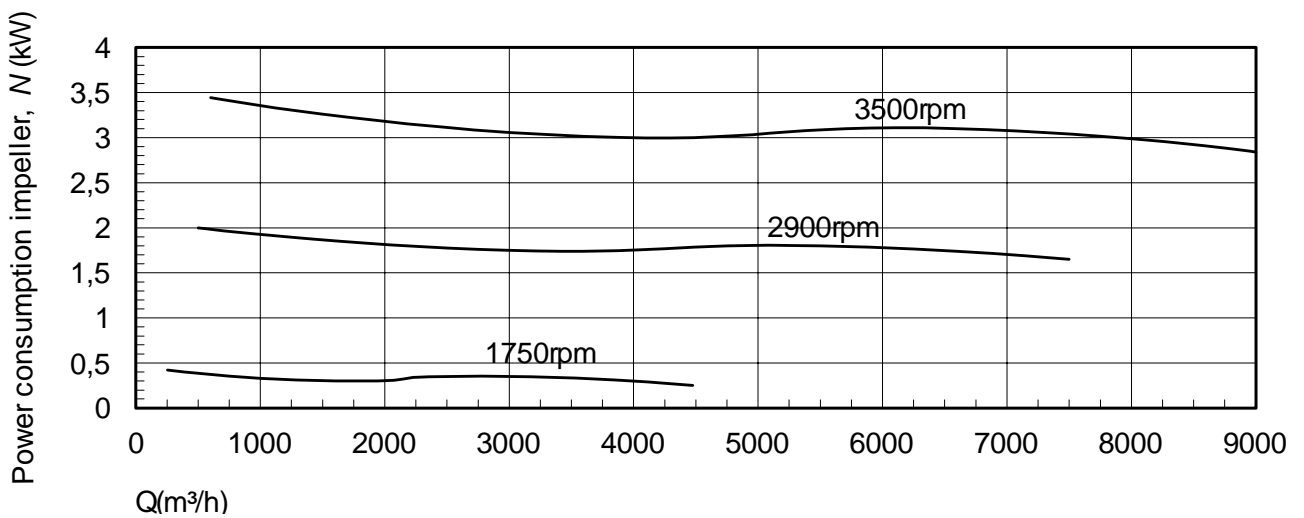
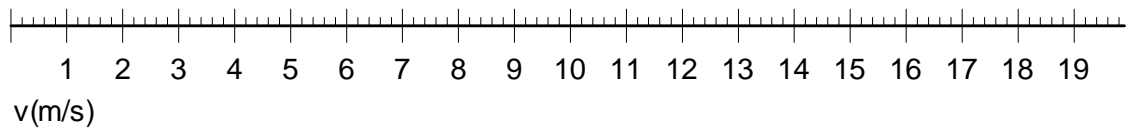
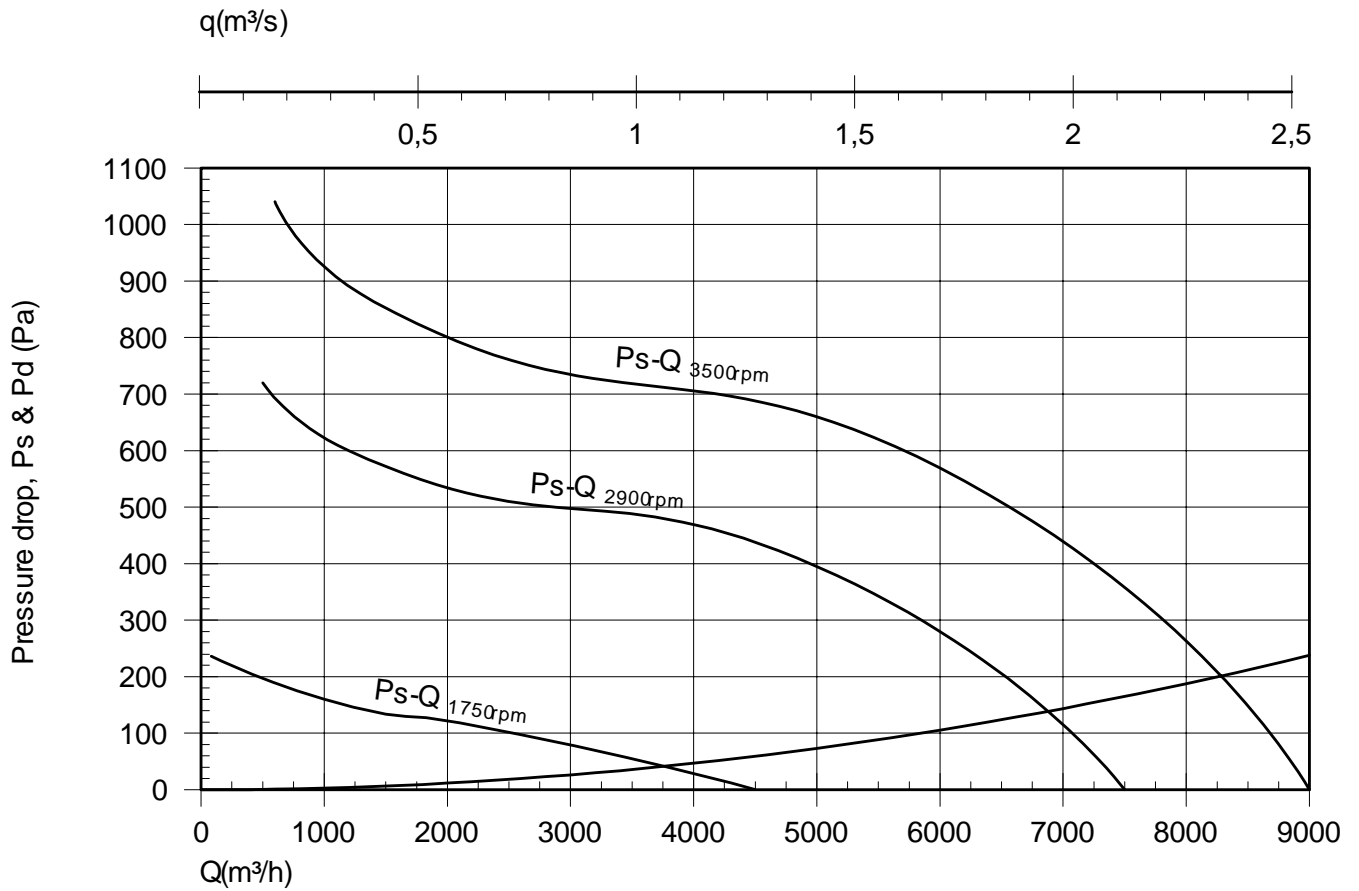
**PPV/PUV
350**



NYBORG AXIAL FLOW FAN PERFORMANCE DATA

**PPV/PUV
400**

Imp: D5/30-20



Nyborg9.prs/4



NYBORG - MAWENT

NYBORG-MAWENT S.A.
ul. Ciepła 6, 82-200 Malbork
tel.: +48 55 646 63 00
fax: +48 55 646 63 09
office@nyborg-mawent.com
www.nyborg-mawent.com



NYBORG AS
N-6230 Sykkylven, Norway
tel.: +47 70 25 40 80
fax: +47 70 25 29 08
office@nyborgfan.com
www.nyborgfan.com

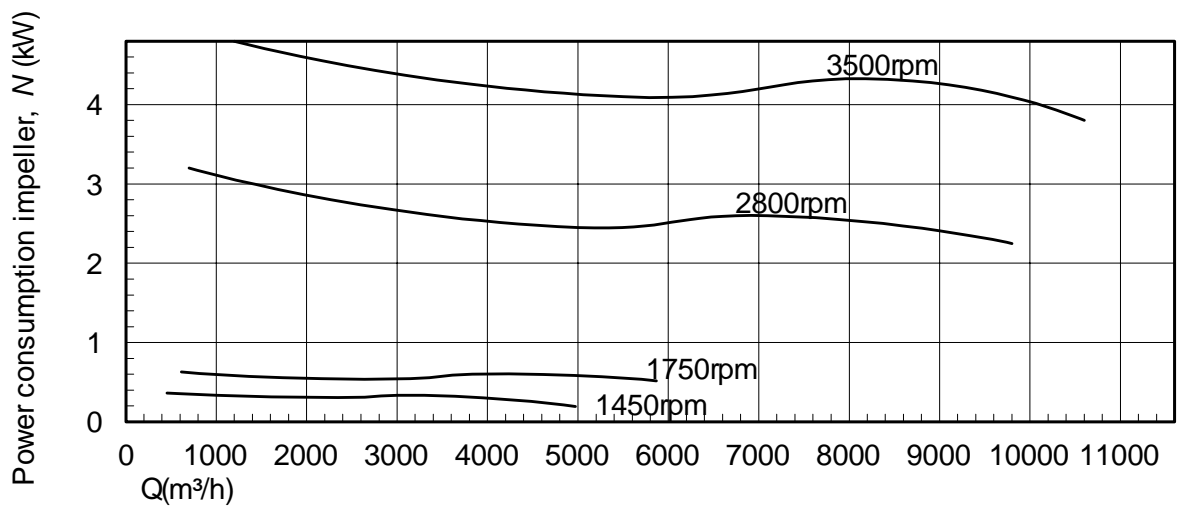
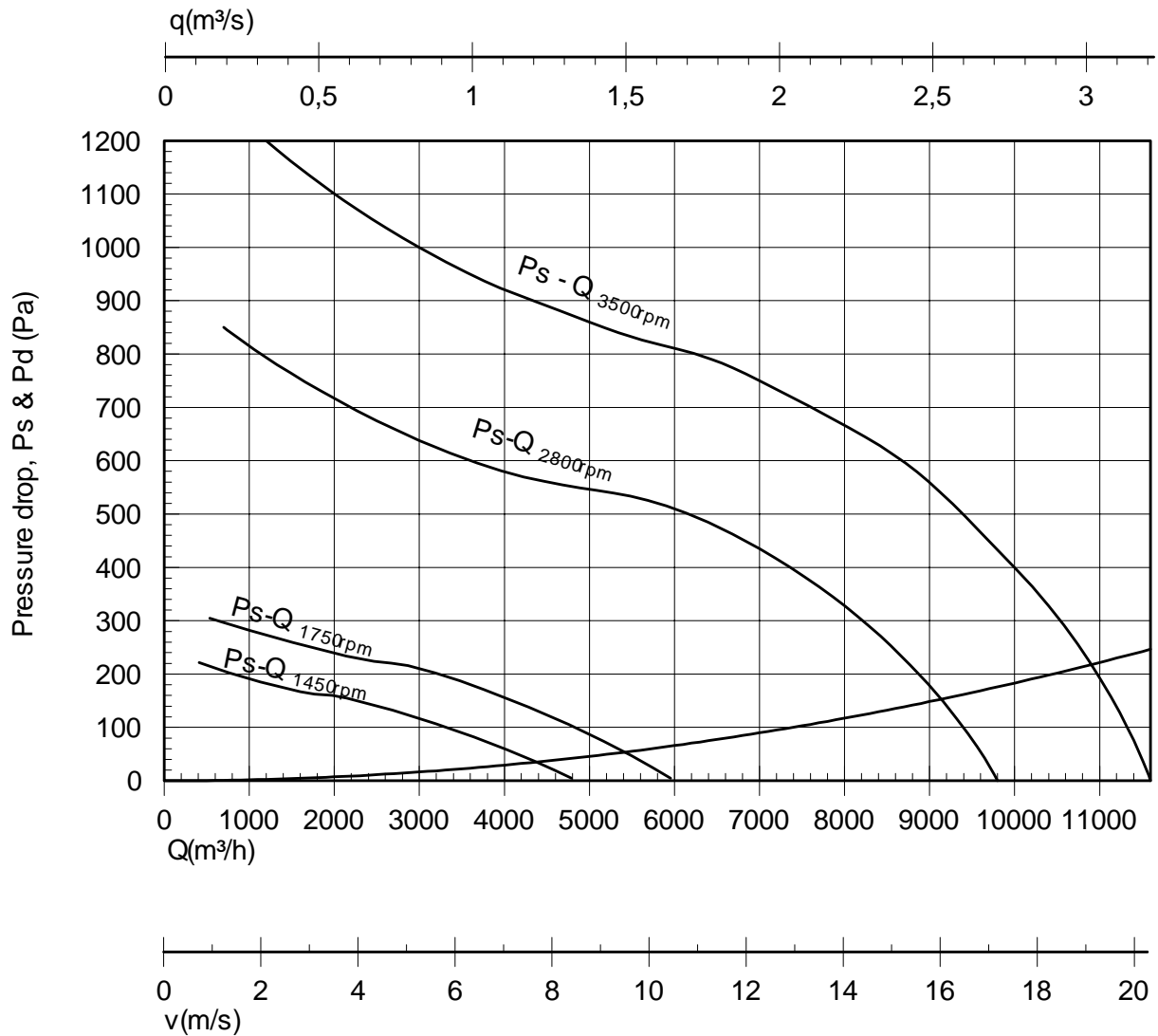
**PPV/PUV
400**



NYBORG AXIAL FLOW FAN PERFORMANCE DATA

**PPV/PUV
450**

Imp: D7/30-20



Nyborg9.prs/5



NYBORG - MAWENT

NYBORG-MAWENT S.A.
ul. Ciepła 6, 82-200 Malbork
tel.: +48 55 646 63 00
fax: +48 55 646 63 09
office@nyborg-mawent.com
www.nyborg-mawent.com



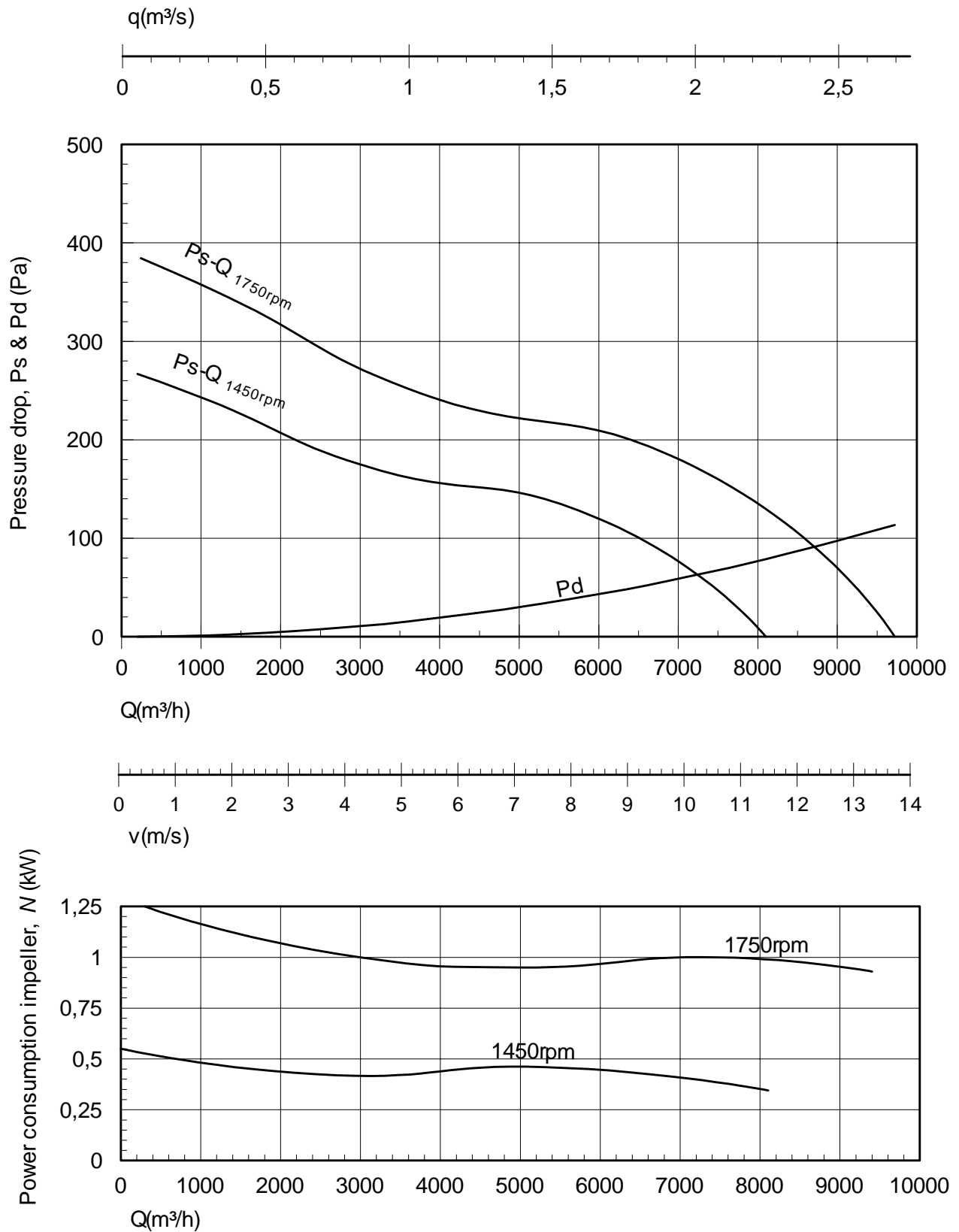
NYBORG AS
N-6230 Sykkylven, Norway
tel.: +47 70 25 40 80
fax: +47 70 25 29 08
office@nyborgfan.com
www.nyborgfan.com

**PPV/PUV
450**



NYBORG AXIAL FLOW FAN PERFORMANCE DATA

**PPV/PUV
500**
Imp: D8/30-20



NYBORG09-21



NYBORG - MAWENT

NYBORG-MAWENT S.A.
ul. Ciepła 6, 82-200 Malbork
tel.: +48 55 646 63 00
fax: +48 55 646 63 09
office@nyborg-mawent.com
www.nyborg-mawent.com



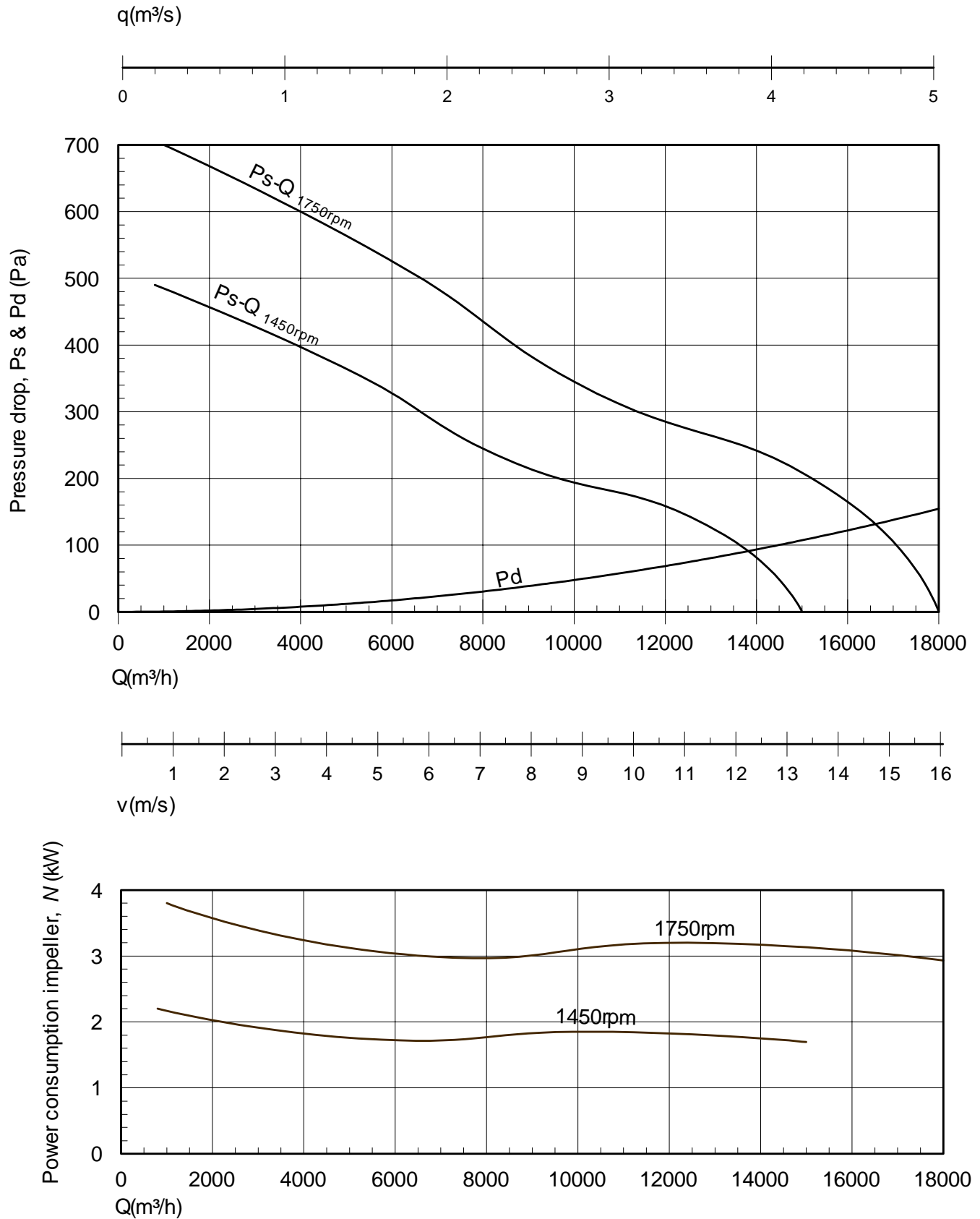
NYBORG AS
N-6230 Sykkylven, Norway
tel.: +47 70 25 40 80
fax: +47 70 25 29 08
office@nyborgfan.com
www.nyborgfan.com

**PPV/PUV
500**



NYBORG AXIAL FLOW FAN PERFORMANCE DATA

**PPV/PUV
630**
Imp: D8/30-20



Nyborg9.prs/8



NYBORG-MAWENT S.A.
ul. Ciepla 6, 82-200 Malbork
tel.: +48 55 646 63 00
fax: +48 55 646 63 09
office@nyborg-mawent.com
www.nyborg-mawent.com



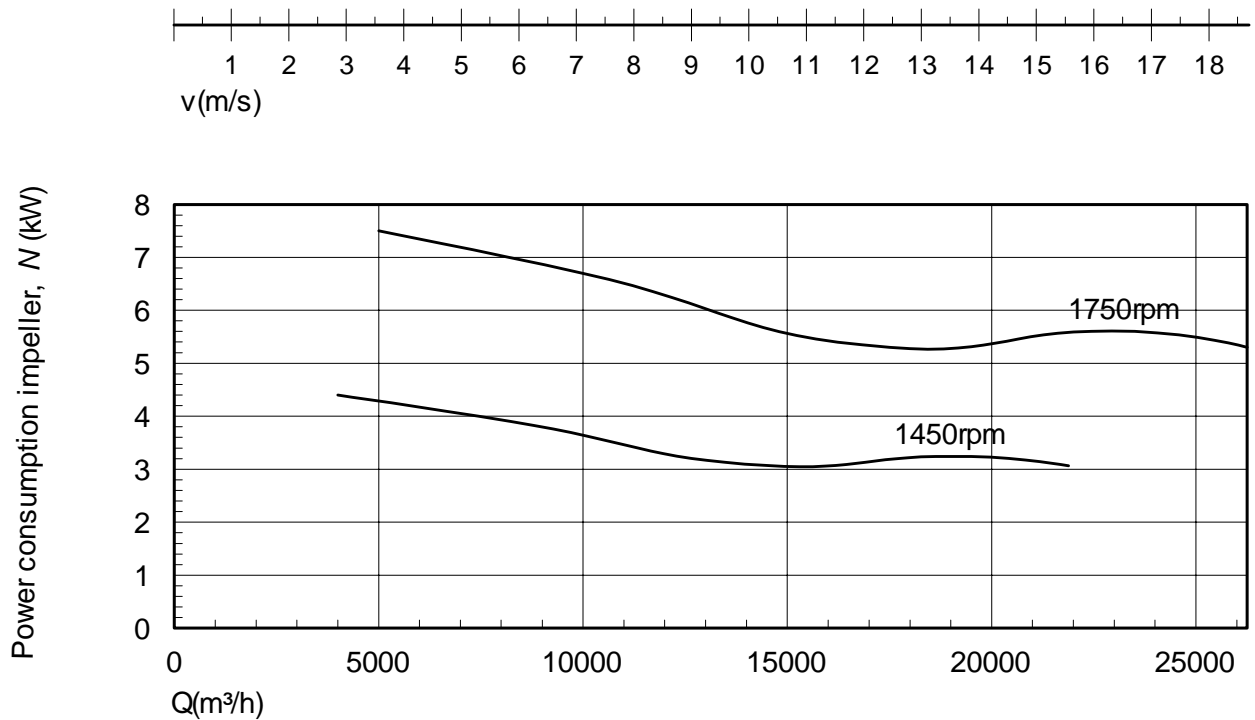
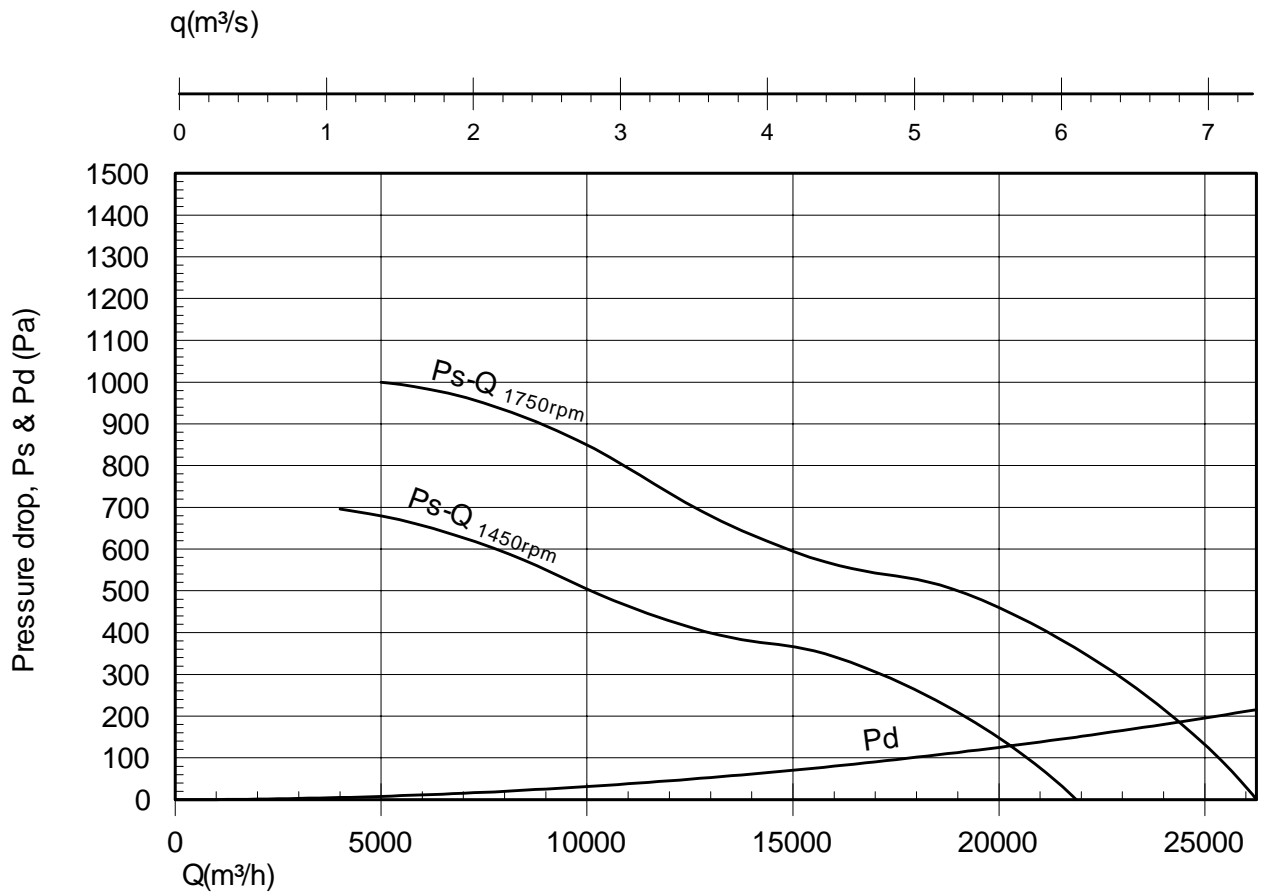
NYBORG AS
N-6230 Sykkylven, Norway
tel.: +47 70 25 40 80
fax: +47 70 25 29 08
office@nyborgfan.com
www.nyborgfan.com

**PPV/PUV
630**



NYBORG AXIAL FLOW FAN PERFORMANCE DATA

**PPV/PUV
700**
Imp: D8/30-20



Nyborg9.prs/9



NYBORG - MAWENT

NYBORG-MAWENT S.A.
ul. Ciepla 6, 82-200 Malbork
tel.: +48 55 646 63 00
fax: +48 55 646 63 09
office@nyborg-mawent.com
www.nyborg-mawent.com



NYBORG AS
N-6230 Sykkylven, Norway
tel.: +47 70 25 40 80
fax: +47 70 25 29 08
office@nyborgfan.com
www.nyborgfan.com

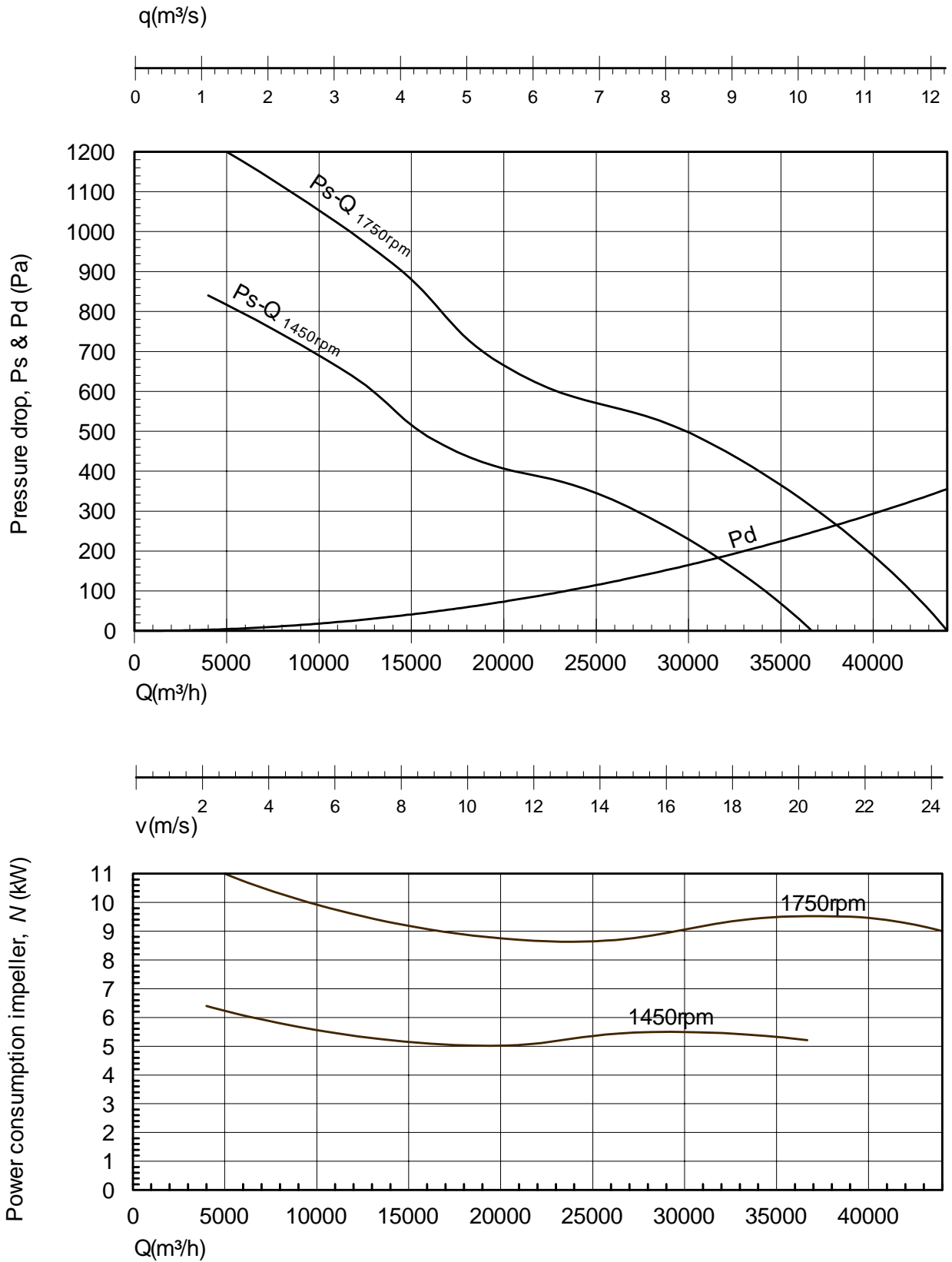
**PPV/PUV
700**



NYBORG AXIAL FLOW FAN PERFORMANCE DATA

**PPV/PUV
800**

Imp: D8/30-20



Nyborg9.prs/10



NYBORG - MAWENT

NYBORG-MAWENT S.A.
ul. Ciepla 6, 82-200 Malbork
tel.: +48 55 646 63 00
fax: +48 55 646 63 09
office@nyborg-mawent.com
www.nyborg-mawent.com



NYBORG AS
N-6230 Sykkylven, Norway
tel.: +47 70 25 40 80
fax: +47 70 25 29 08
office@nyborgfan.com
www.nyborgfan.com

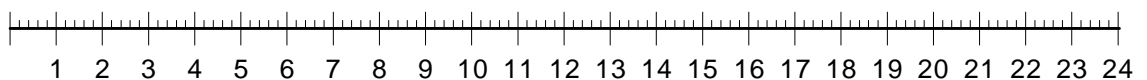
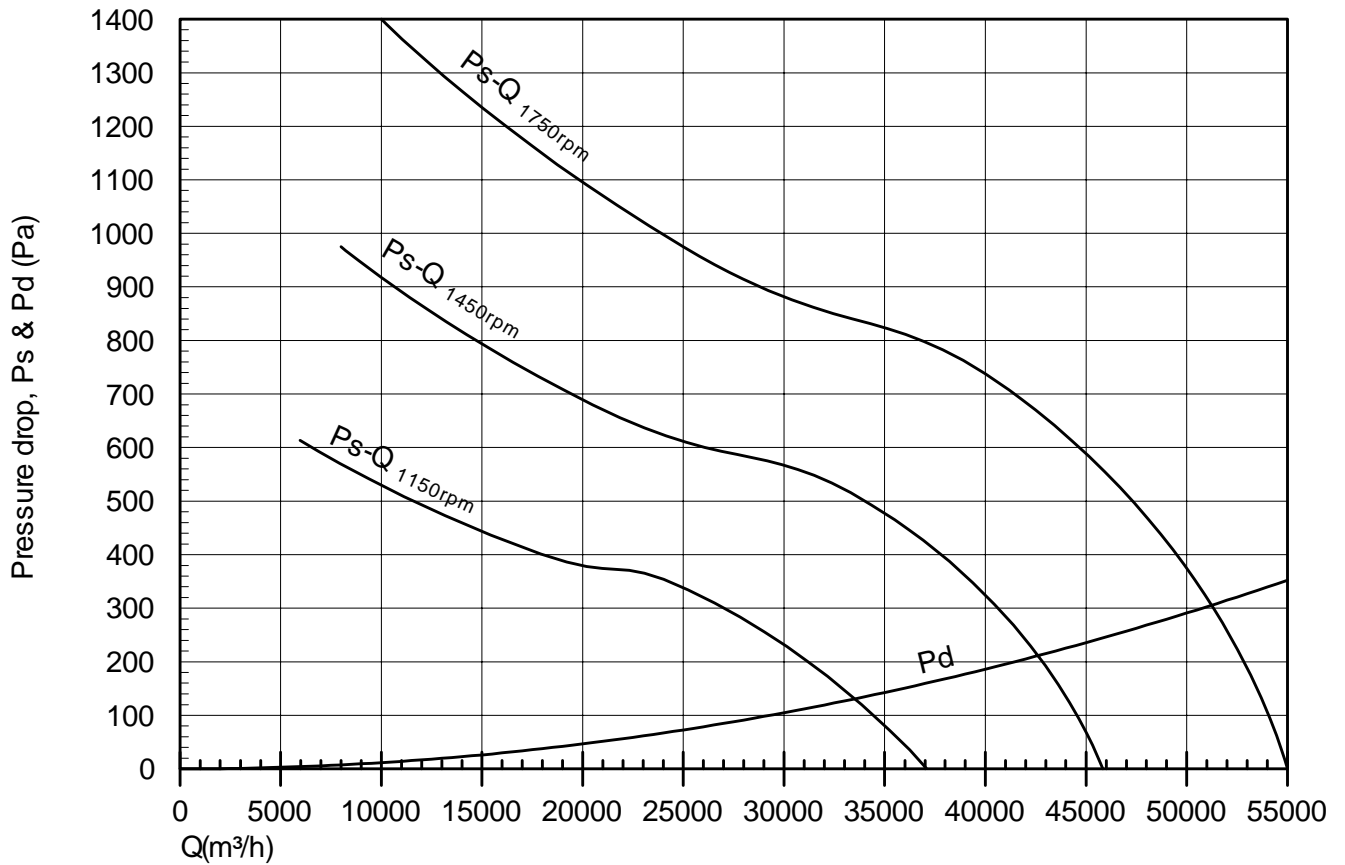
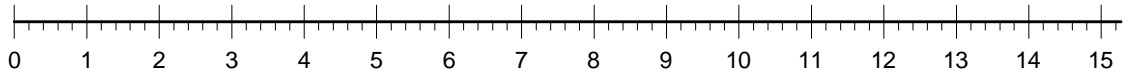
**PPV/PUV
800**



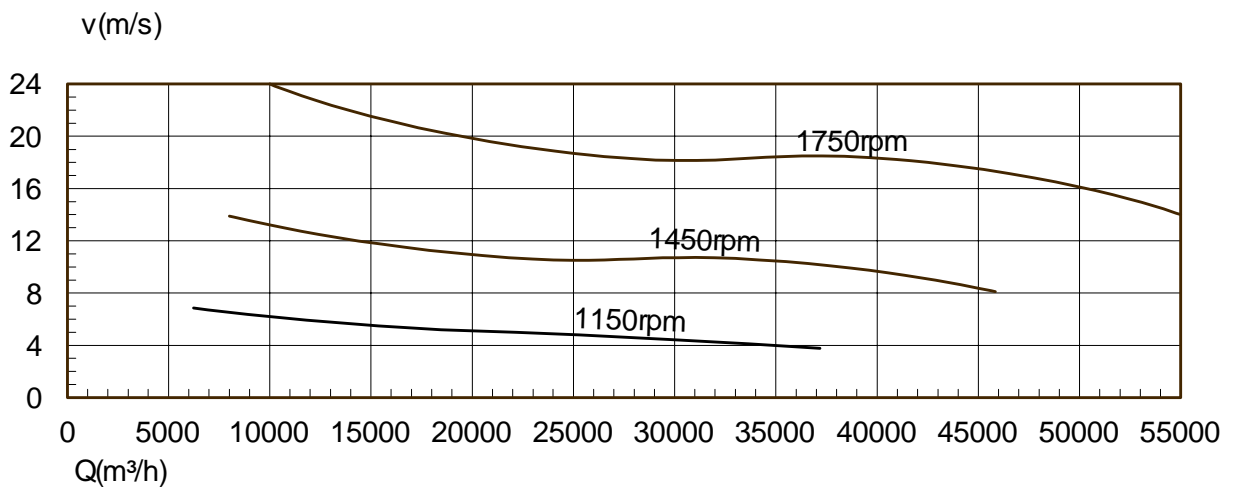
NYBORG AXIAL FLOW FAN PERFORMANCE DATA

**PPV/PUV
900**
Imp: D10/17-27

q(m³/s)



Power consumption impeller, N (kW)

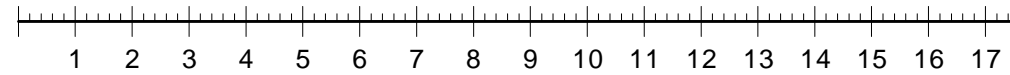
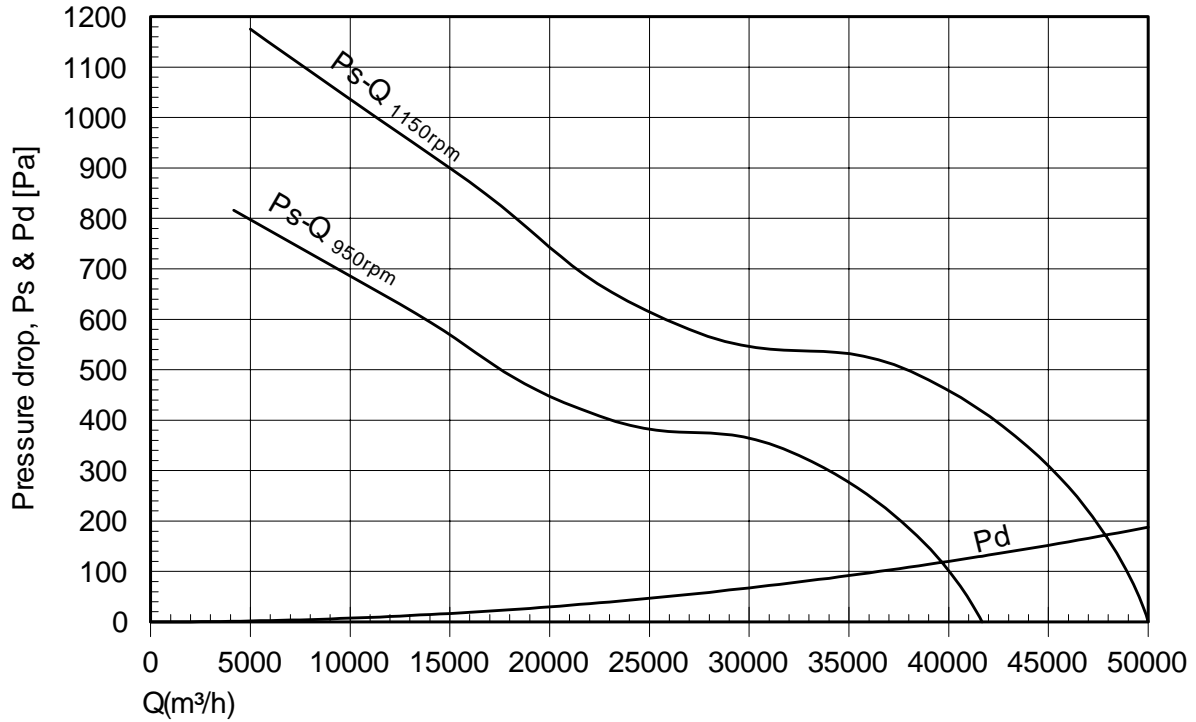




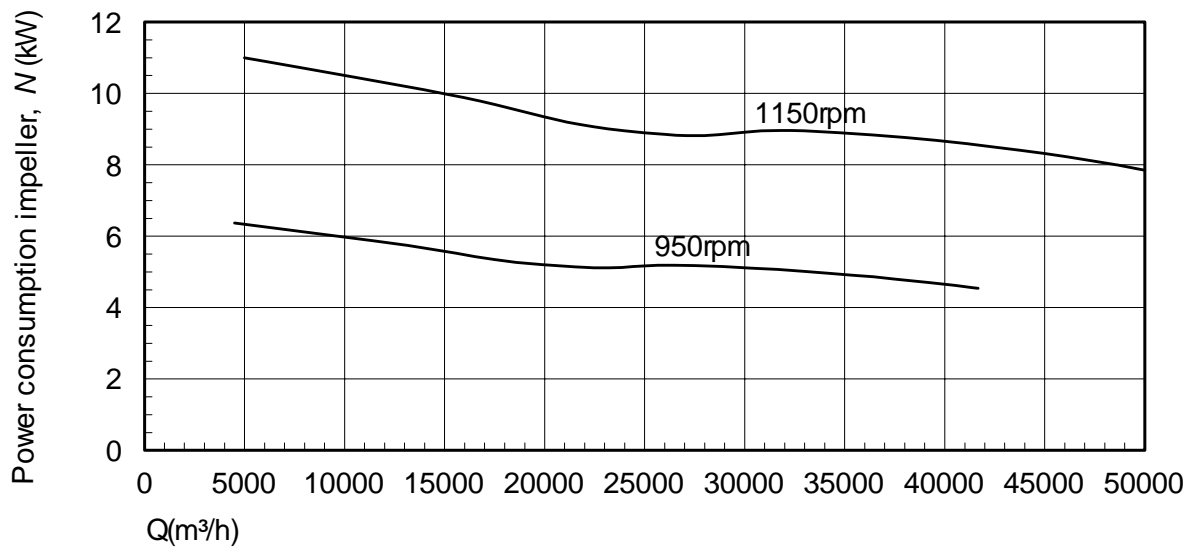
NYBORG AXIAL FLOW FAN PERFORMANCE DATA

**PPV/PUV
1000**
Imp: D10/20-30

$q(m^3/s)$



$v [m/s]$



Nyborg10.prs/1



NYBORG - MAWENT

NYBORG-MAWENT S.A.
ul. Ciepła 6, 82-200 Malbork
tel.: +48 55 646 63 00
fax: +48 55 646 63 09
office@nyborg-mawent.com
www.nyborg-mawent.com



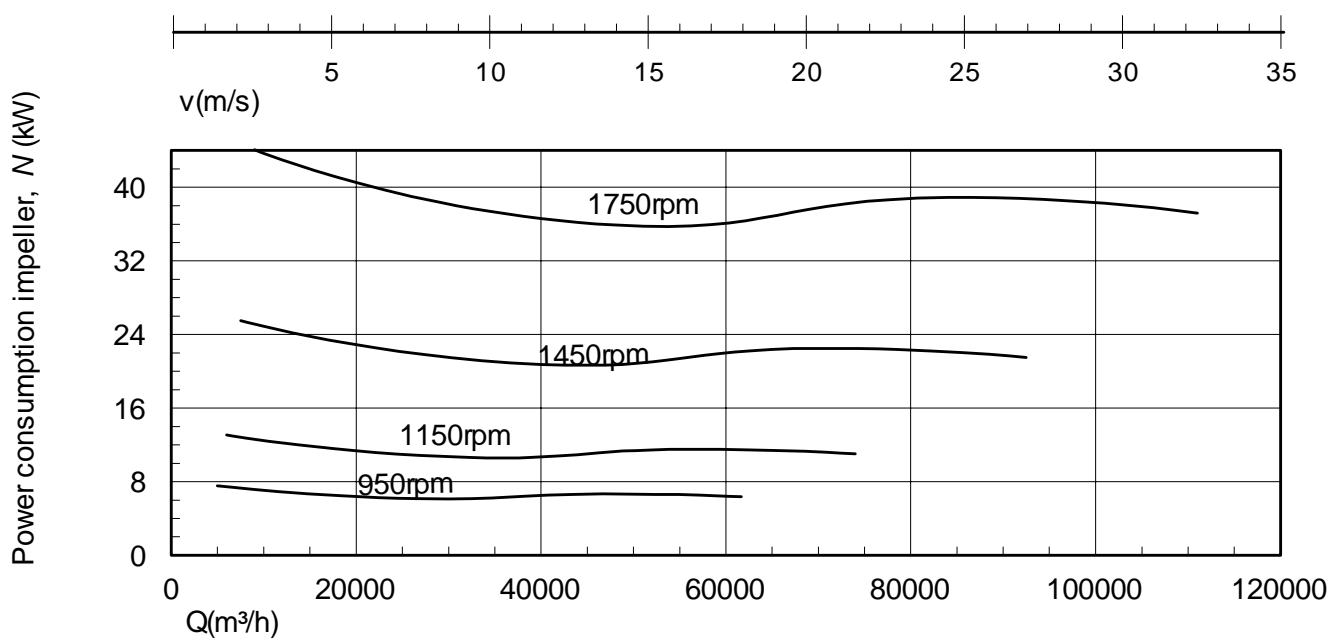
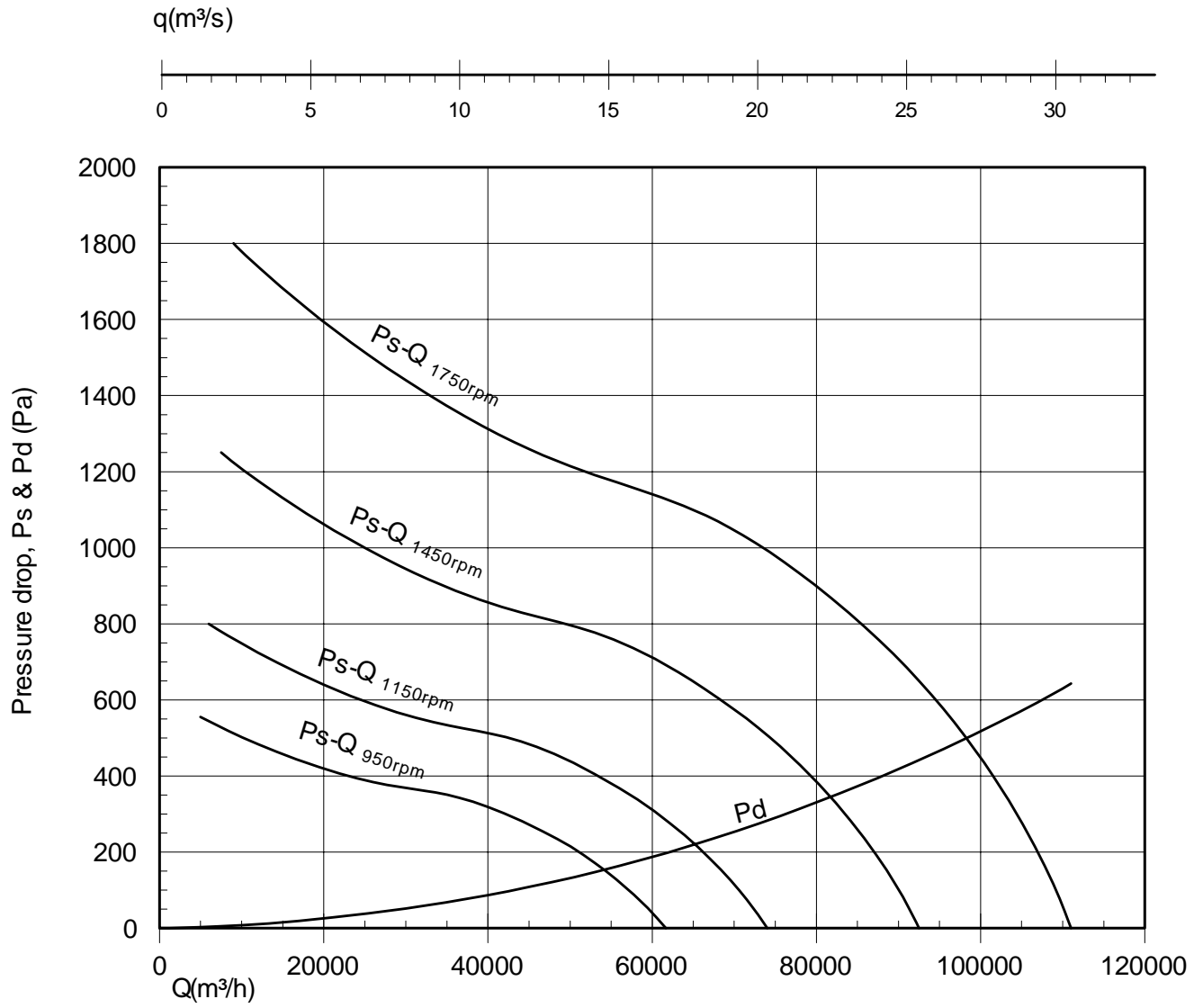
NYBORG AS
N-6230 Sykkylven, Norway
tel.: +47 70 25 40 80
fax: +47 70 25 29 08
office@nyborgfan.com
www.nyborgfan.com

**PPV/PUV
1000**



NYBORG AXIAL FLOW FAN PERFORMANCE DATA

**PPV/PUV
1100**
Imp: A7L / 16



Nyborg09.prs/12



NYBORG - MAWENT

NYBORG-MAWENT S.A.
ul. Ciepła 6, 82-200 Malbork
tel.: +48 55 646 63 00
fax: +48 55 646 63 09
office@nyborg-mawent.com
www.nyborg-mawent.com



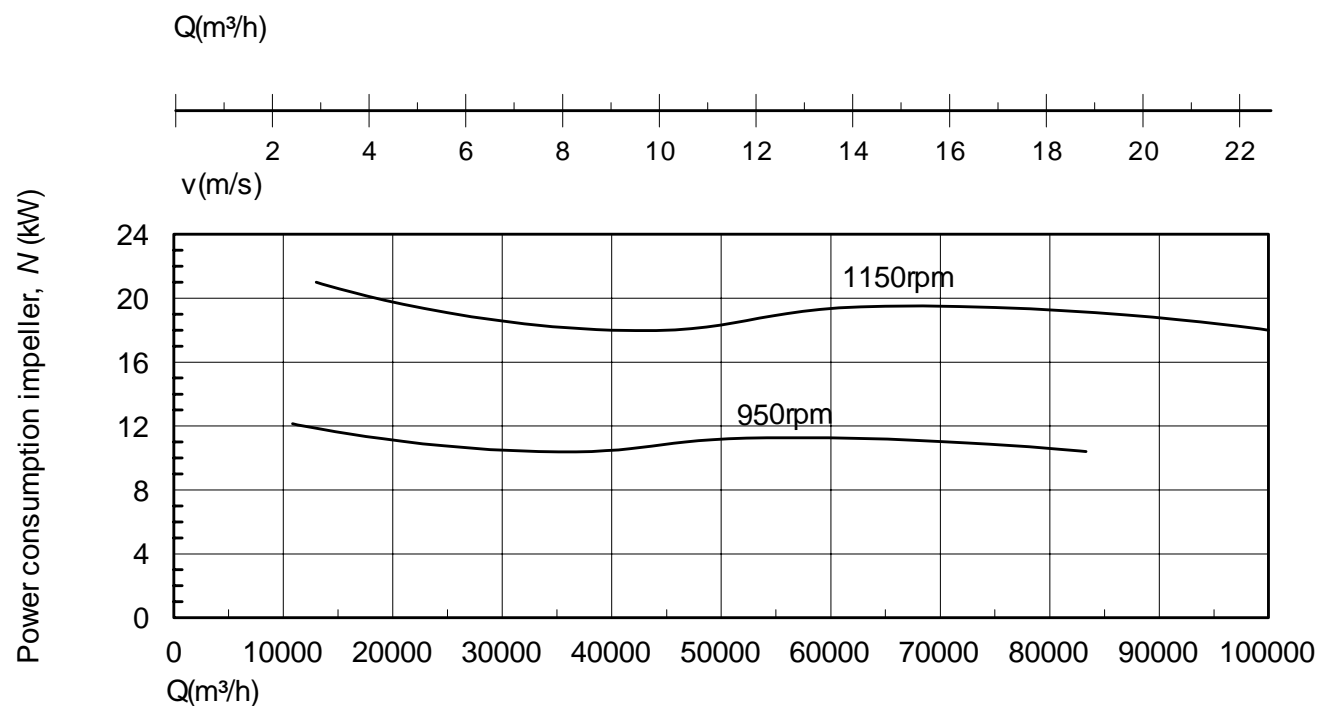
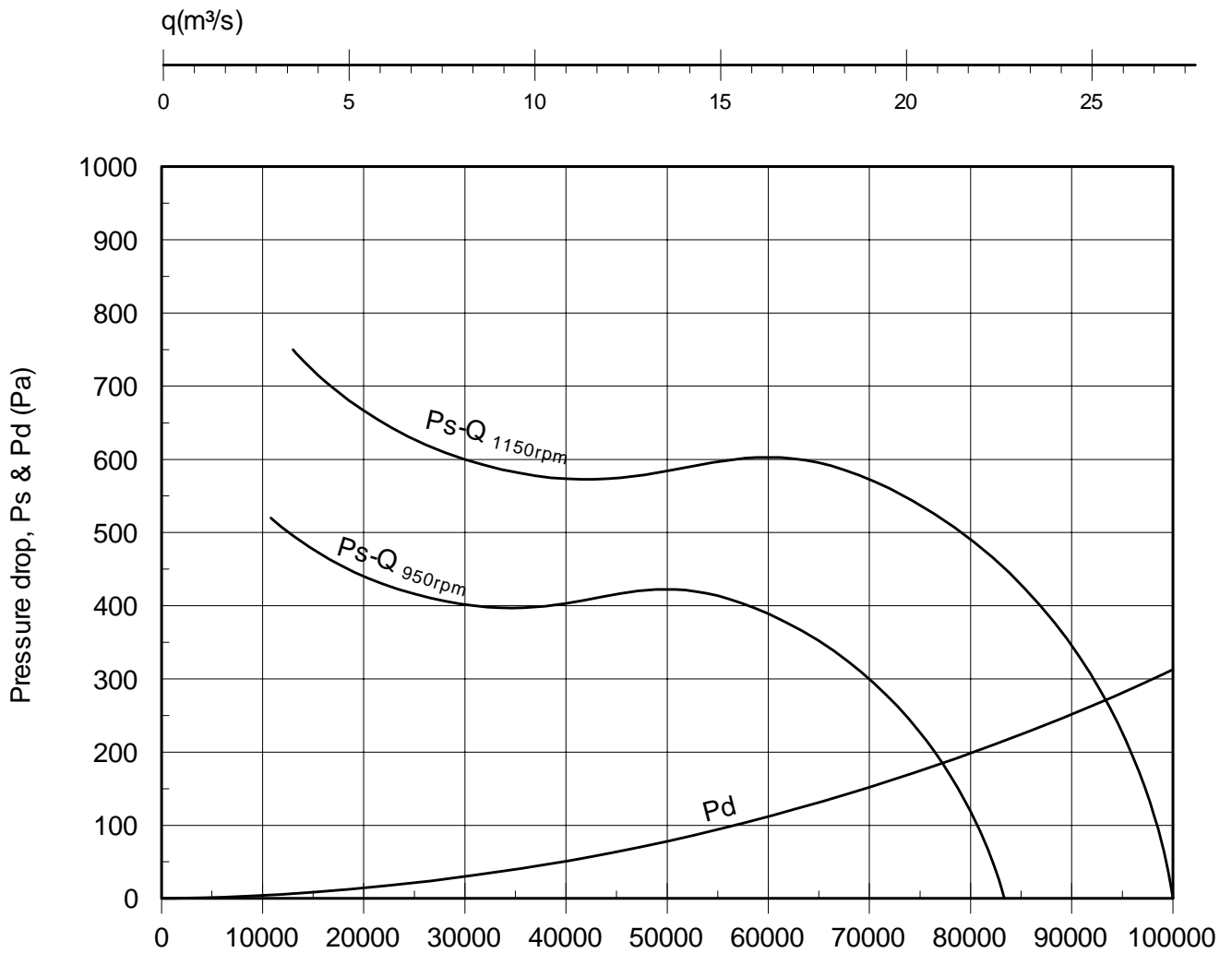
NYBORG AS
N-6230 Sykkylven, Norway
tel.: +47 70 25 40 80
fax: +47 70 25 29 08
office@nyborgfan.com
www.nyborgfan.com

**PPV/PUV
1100**



NYBORG AXIAL FLOW FAN PERFORMANCE DATA

**PPV/PUV
1250**
Imp: A9T / 21



Nyborg09.prs/13



NYBORG - MAWENT

NYBORG-MAWENT S.A.
ul. Ciepla 6, 82-200 Malbork
tel.: +48 55 646 63 00
fax: +48 55 646 63 09
office@nyborg-mawent.com
www.nyborg-mawent.com



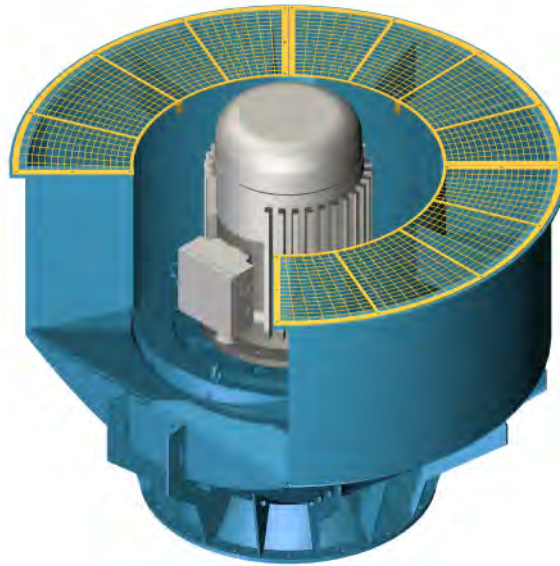
NYBORG AS
N-6230 Sykkylven, Norway
tel.: +47 70 25 40 80
fax: +47 70 25 29 08
office@nyborgfan.com
www.nyborgfan.com

**PPV/PUV
1250**



CENTRIFUGAL EXHAUST FAN FOR EXPLOSIVE FUMES

TYPE
SUV - 1RX



NYBORG CENTRIFUGAL EXHAUST FAN

Is designed primarily for ventilation of pump-rooms and other places where explosive fumes occur. The fan is spark proof and designed for air extraction. Long experience has contributed to a simple construction with only one rotating part in addition to the motor itself. The impeller is mounted directly to the motor shaft, thus making one unit with the motor flange, which can be lifted out for inspection.

Fan casing and motor flange are made of salt- and ammonia-resistant aluminium.

The impeller is made of salt- and ammonia-resistant aluminium. It is aerodynamically shaped and balanced.

The wire mesh guard is made of stainless steel.

Greasing-point for the gastight assembly is provided on the top of the motor flange.



The motor is flameproof, totally enclosed, natural cooled and designed for above deck mounting.

Test certificates are delivered with each motor. Counter flange of steel for duct connection.

EQUIPMENT

Two spare sealing-rings for the gastight assembly, mounting- and demounting tools for the impeller and an instruction with data. The equipment is packed in a separate box.

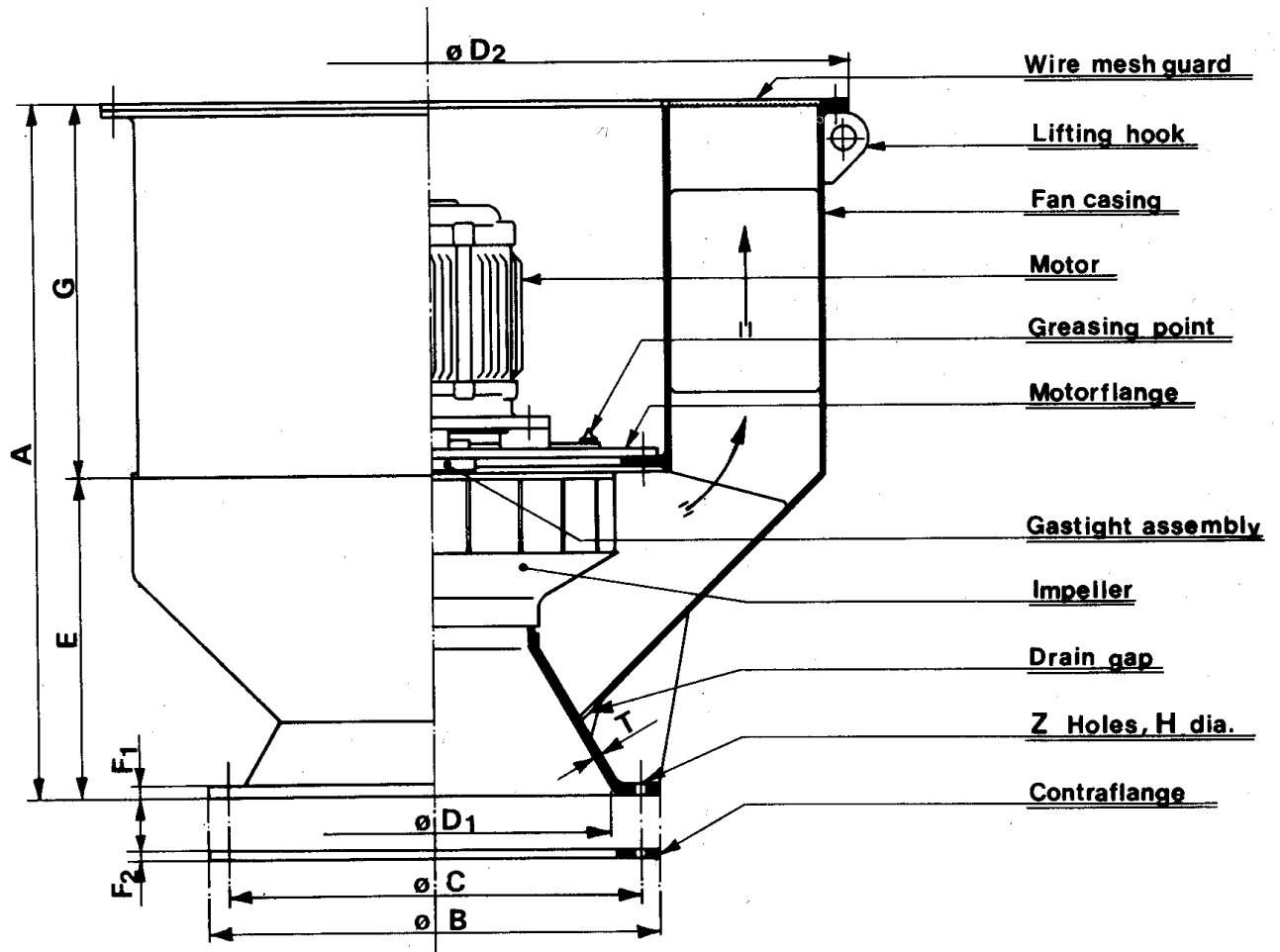
Size No	A	B	C	D1	D2	E	F1	F2	G	Z	H	T	Weight less motor
200	560	270	242	200	550	220	10	8	340	8	12	5	
250	610	330	292	250	600	270	10	8	340	8	12	5	
300	610	390	360	300	680	270	10	10	340	8	14	6	
350	650	437	405	350	810	310	10	10	340	8	14	6	
400	805	488	460	400	860	380	10	10	425	12	14	6	
450	910	558	510	450	960	400	15	12	510	12	14	6	
500	890	609	560	500	1010	380	15	12	510	12	14	6	
550	910	660	630	550	1160	400	15	12	510	12	14	6	

	 <p>NYBORG-MAWENT S.A. ul. Ciepła 6, 82-200 Malbork tel.: +48 55 646 63 00 fax: +48 55 646 63 09 office@nyborg-mawent.com www.nyborg-mawent.com</p>	 <p>NYBORG AS N-6230 Sykkylven, Norway tel.: +47 70 25 40 80 fax: +47 70 25 29 08 office@nyborgfan.com www.nyborgfan.com</p>	<p>TYPE SUV - 1RX</p>
--	---	---	----------------------------------



Dimension drawing

SUV – 1RX



Size No	A	B	ØC	ØD1	ØD2	E	F1	F2	G	Z	H	T	Weight less motor
200	560	270	310	200	550	220	10	8	340	8	12	5	
250	610	330	292	250	600	270	10	8	340	8	12	5	
300	610	390	360	300	680	270	10	10	340	8	14	6	
350	650	437	405	350	810	310	10	10	340	8	14	6	
400	805	488	460	400	860	380	10	10	425	12	14	6	
450	910	558	510	450	960	400	15	12	510	12	14	6	
500	890	609	560	500	1010	380	15	12	510	12	14	6	
550	910	660	630	550	1160	400	15	12	510	12	14	6	
630	1050	740	698	630	1250	410	15	12	640	16	14	6	
800	1180	912	870	800	1670	540	15	12	640	16	19	10	

1-847



NYBORG - MAWENT

NYBORG-MAWENT S.A.
ul. Ciepla 6, 82-200 Malbork
tel.: +48 55 646 63 00
fax: +48 55 646 63 09
office@nyborg-mawent.com
www.nyborg-mawent.com



NYBORG AS
N-6230 Sykkylven, Norway
tel.: +47 70 25 40 80
fax: +47 70 25 29 08
office@nyborgfan.com
www.nyborgfan.com

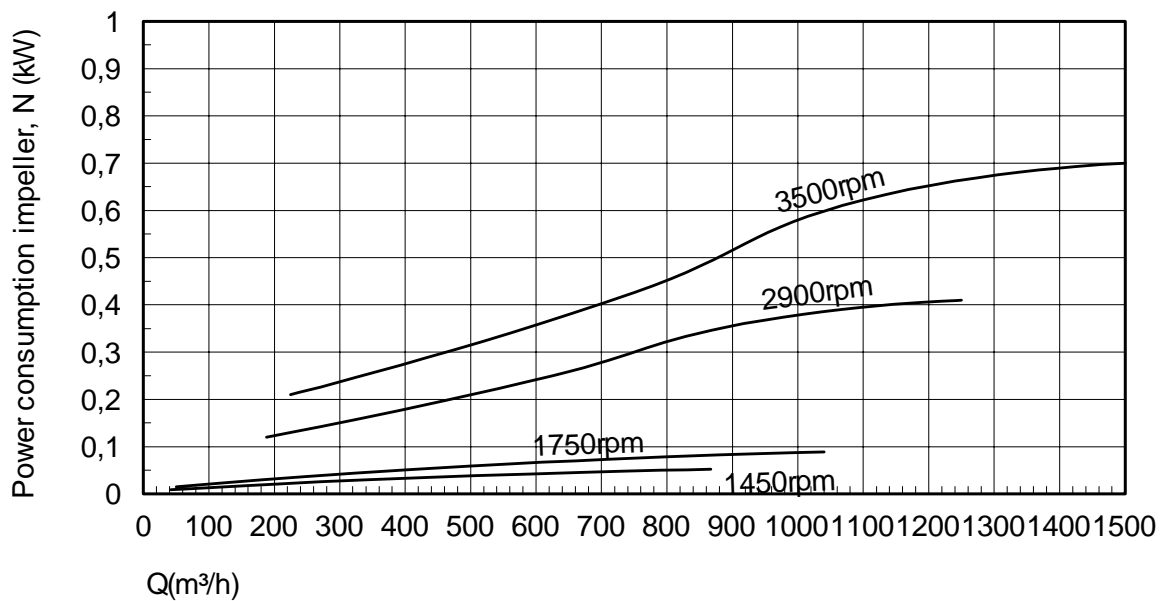
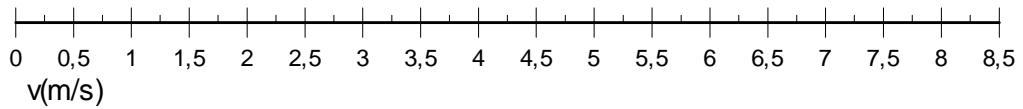
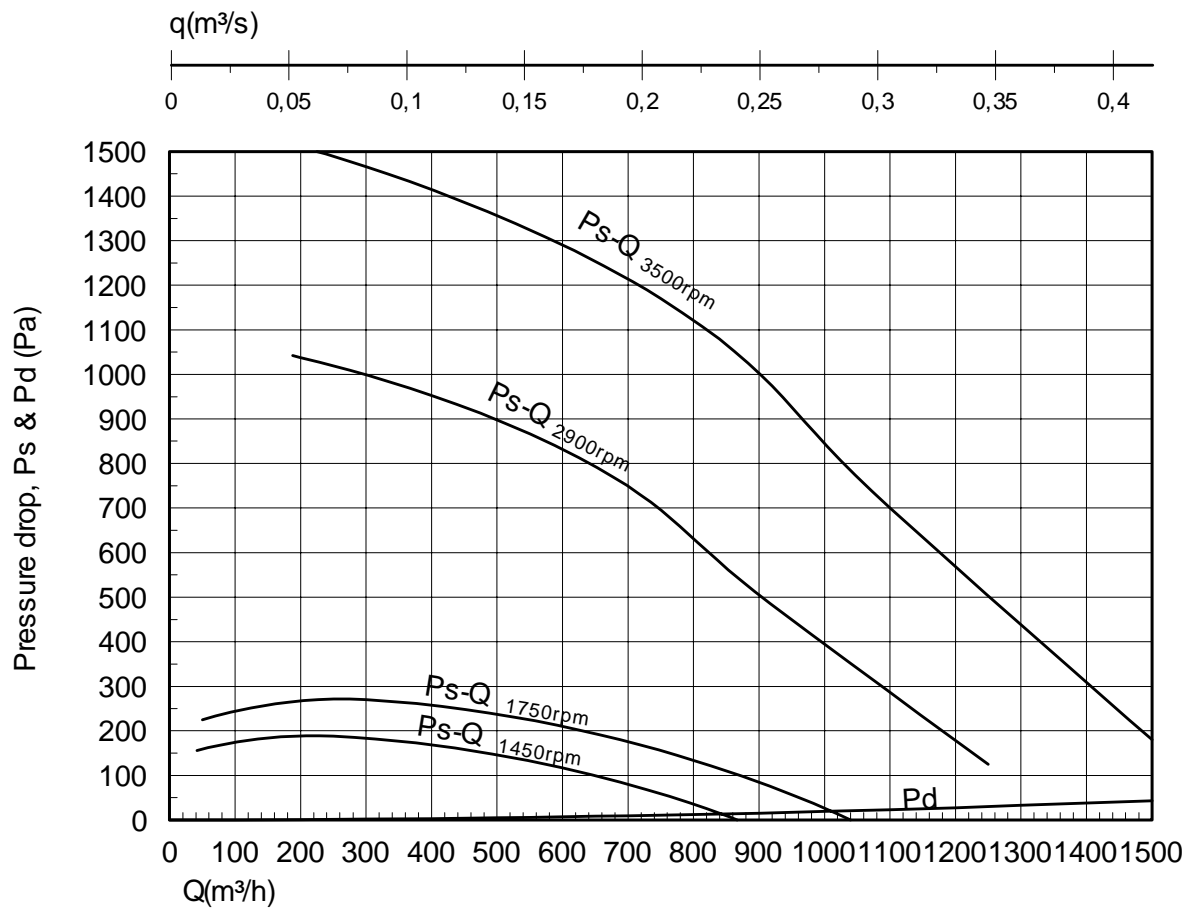
SUV – 1RX



CENTRIFUGAL EXHAUST FAN PERFORMANCE DATA

SUV 250 B

Imp: 260x82



Nyborg17.prs/1



NYBORG - MAWENT

NYBORG-MAWENT S.A.
ul. Ciepła 6, 82-200 Malbork
tel.: +48 55 646 63 00
fax: +48 55 646 63 09
office@nyborg-mawent.com
www.nyborg-mawent.com



NYBORG AS
N-6230 Sykkylven, Norway
tel.: +47 70 25 40 80
fax: +47 70 25 29 08
office@nyborgfan.com
www.nyborgfan.com

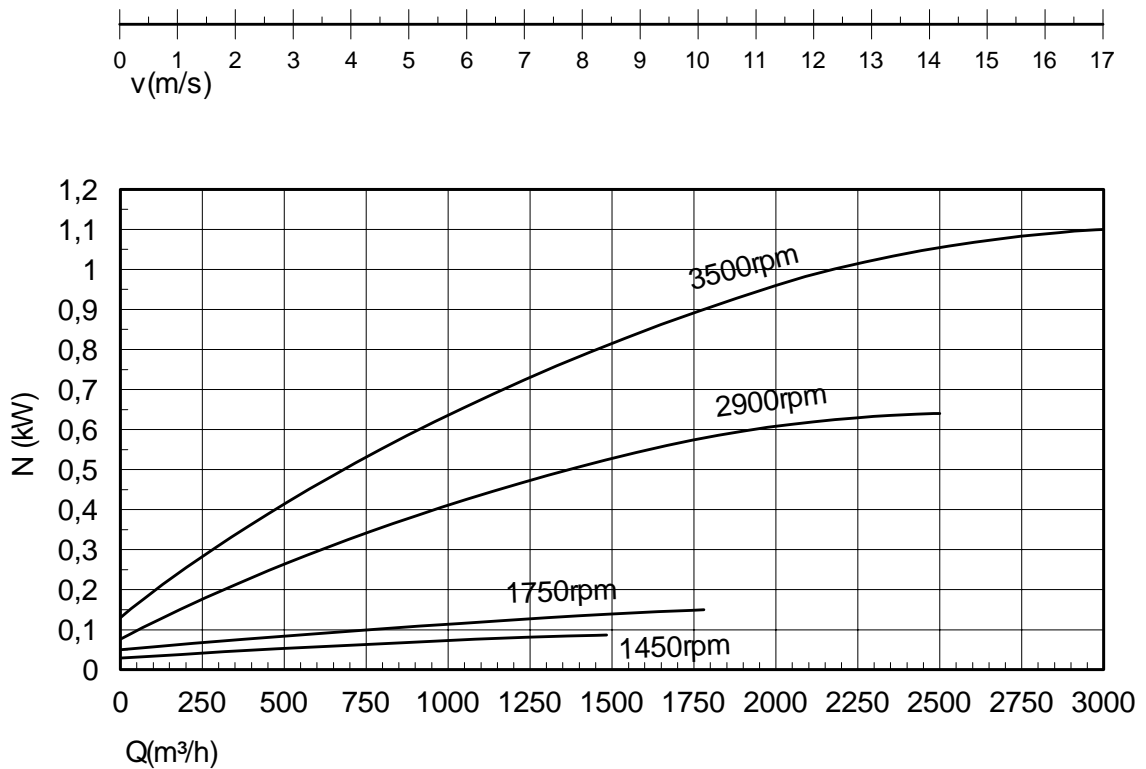
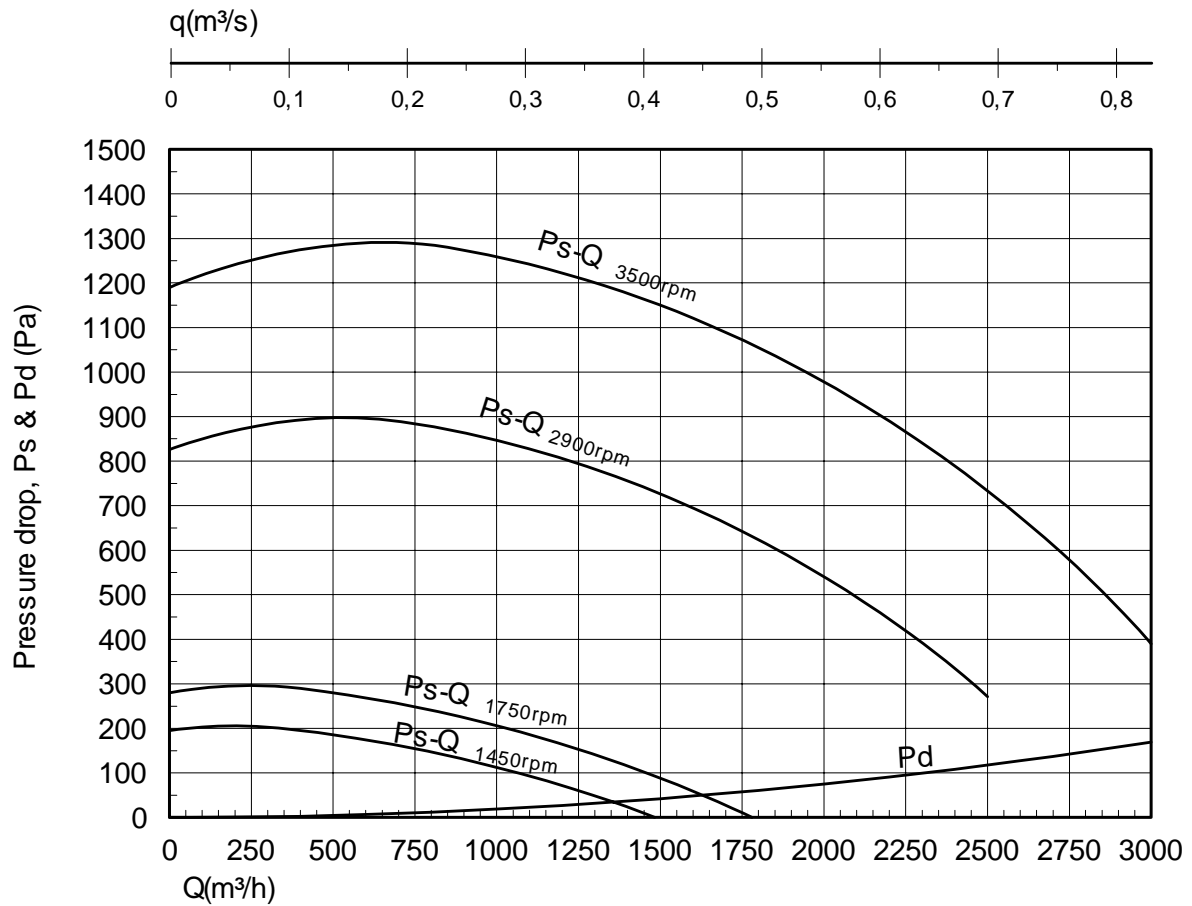
SUV 250 B



CENTRIFUGAL EXHAUST FAN PERFORMANCE DATA

SUV 250 Z

Imp: 250x70



Nyborg17.prs/2



NYBORG - MAWENT

NYBORG-MAWENT S.A.
ul. Ciepła 6, 82-200 Malbork
tel.: +48 55 646 63 00
fax: +48 55 646 63 09
office@nyborg-mawent.com
www.nyborg-mawent.com



NYBORG AS
N-6230 Sykkylven, Norway
tel.: +47 70 25 40 80
fax: +47 70 25 29 08
office@nyborgfan.com
www.nyborgfan.com

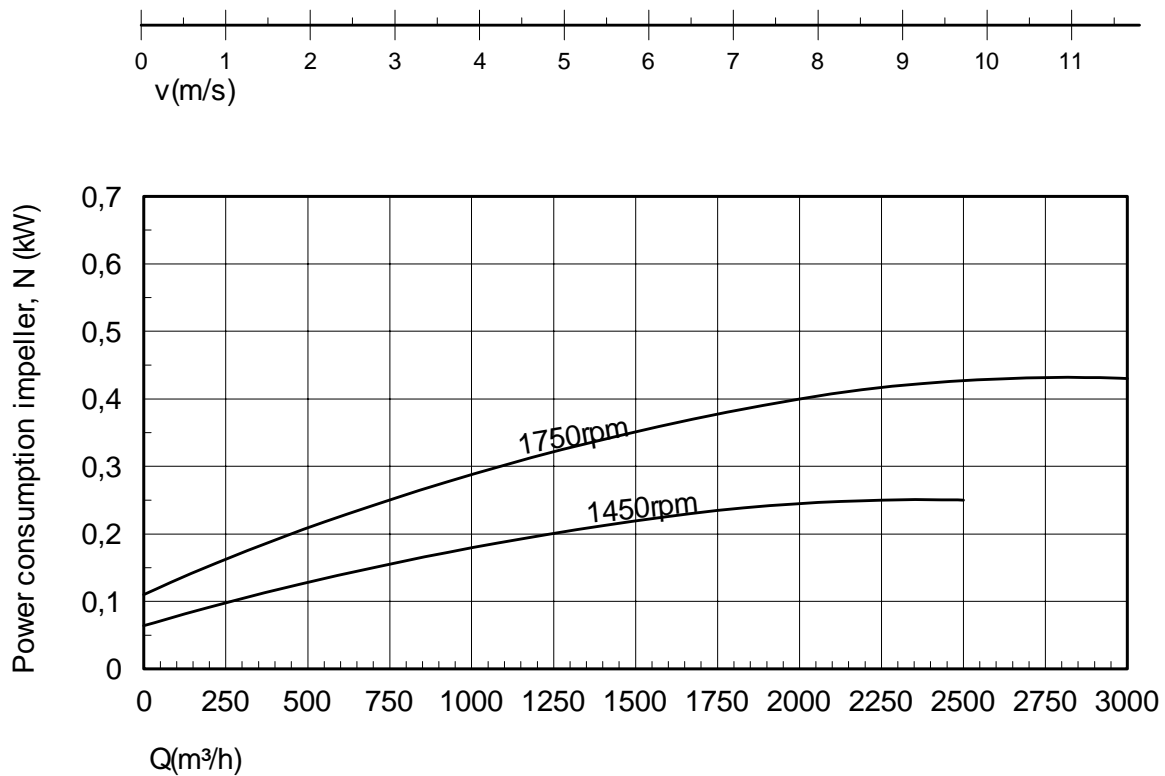
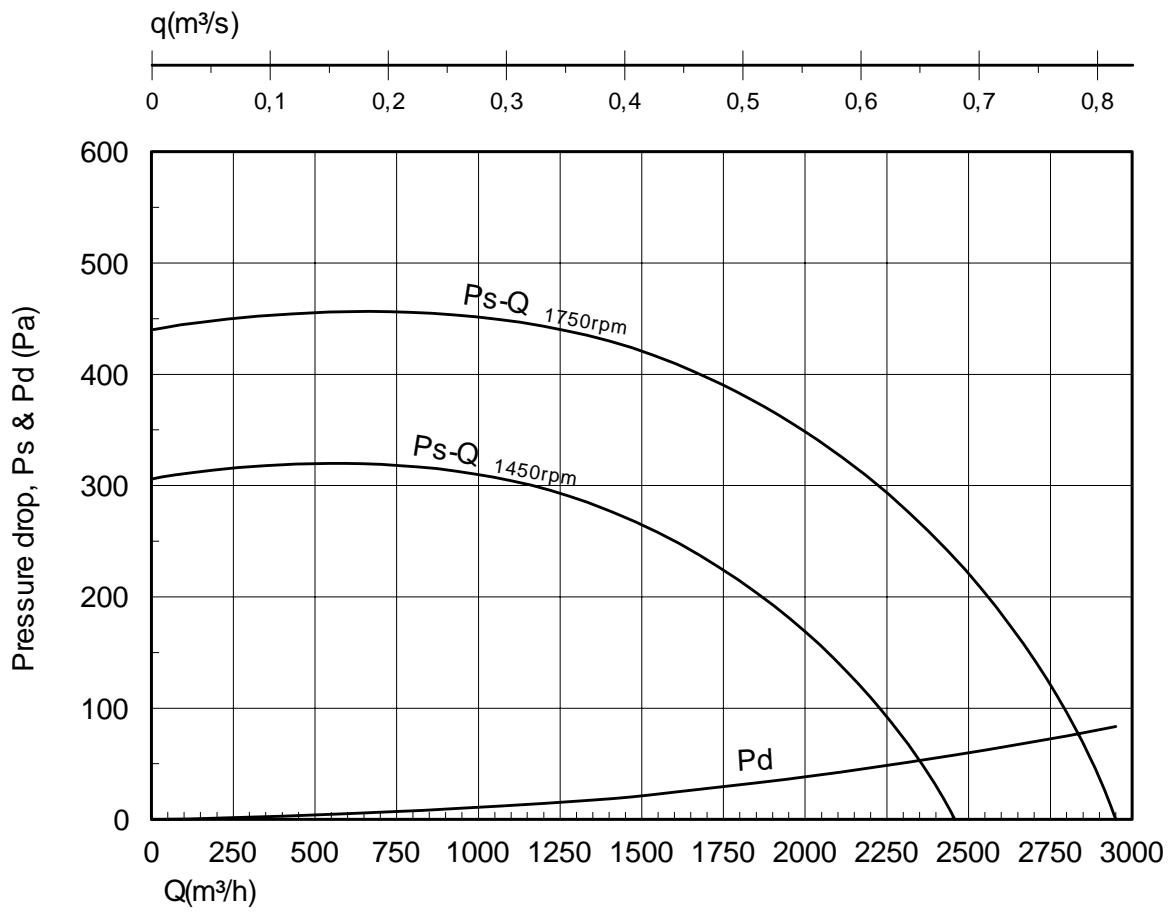
SUV 250 Z



CENTRIFUGAL EXHAUST FAN PERFORMANCE DATA

SUV 300 Z

Imp: 310x70



Nyborg17.prs/3



NYBORG - MAWENT

NYBORG-MAWENT S.A.
ul. Ciepła 6, 82-200 Malbork
tel.: +48 55 646 63 00
fax: +48 55 646 63 09
office@nyborg-mawent.com
www.nyborg-mawent.com



NYBORG AS
N-6230 Sykkylven, Norway
tel.: +47 70 25 40 80
fax: +47 70 25 29 08
office@nyborgfan.com
www.nyborgfan.com

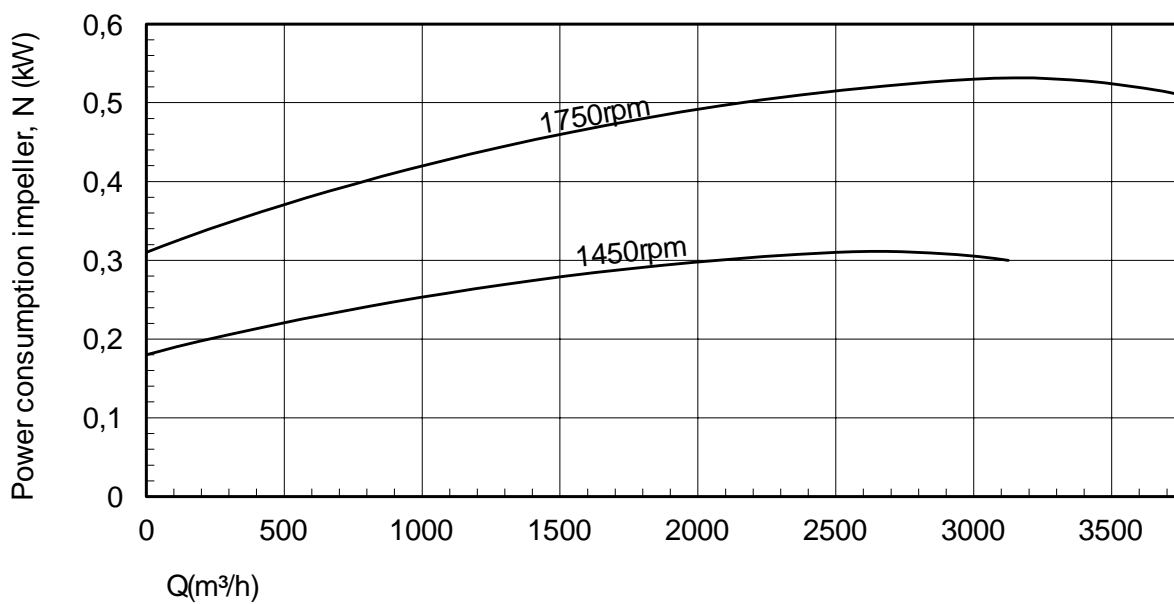
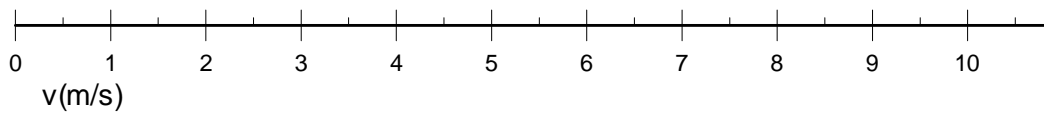
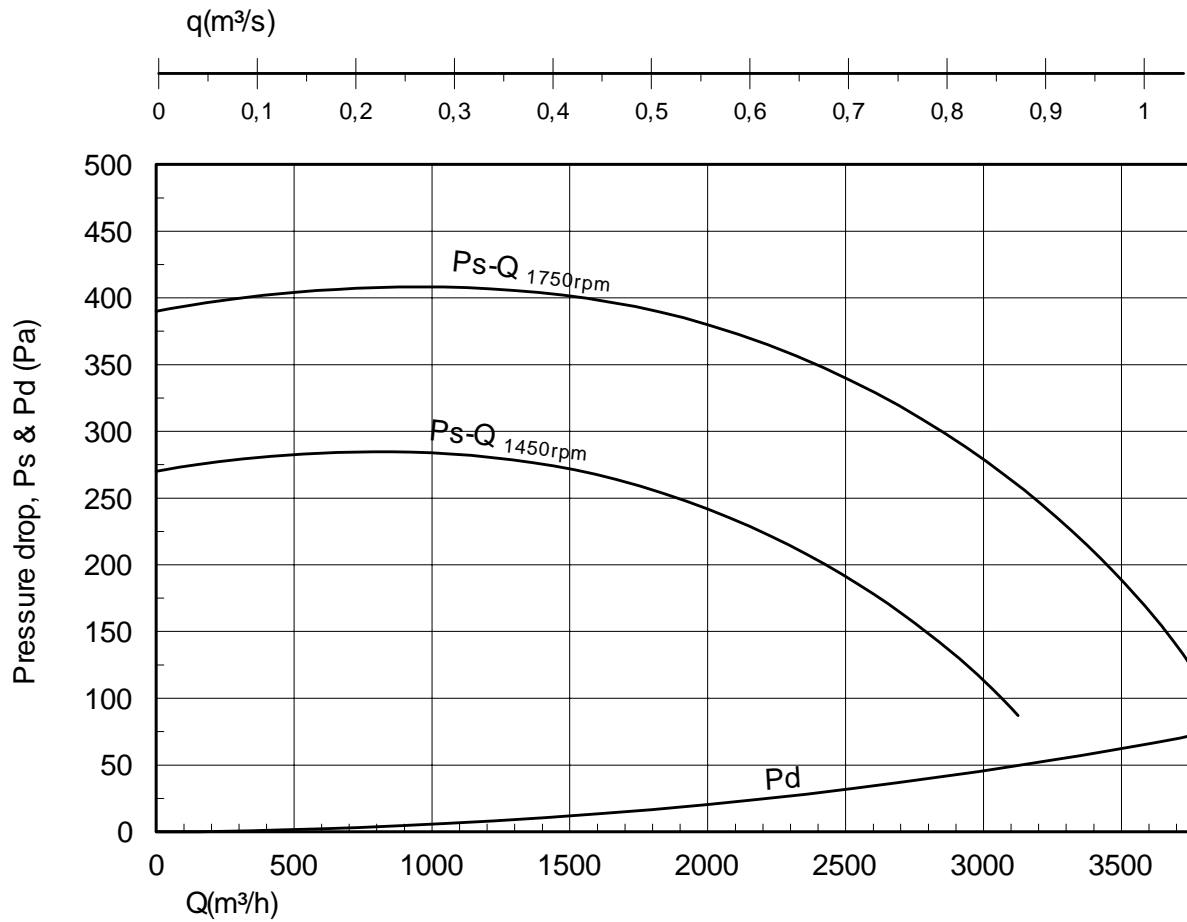
SUV 300 Z



CENTRIFUGAL EXHAUST FAN PERFORMANCE DATA

SUV 350 B

Imp: 350x93



Nyborg17.prs/4



NYBORG - MAWENT

NYBORG-MAWENT S.A.
ul. Ciepla 6, 82-200 Malbork
tel.: +48 55 646 63 00
fax: +48 55 646 63 09
office@nyborg-mawent.com
www.nyborg-mawent.com



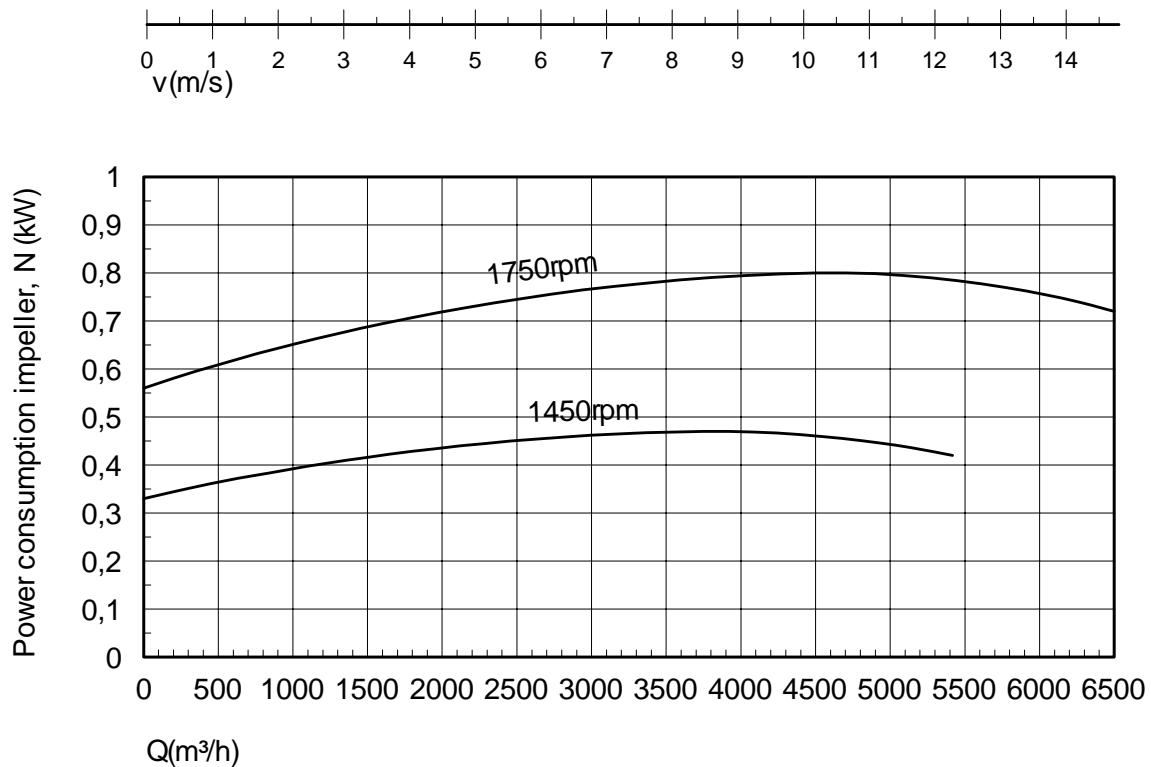
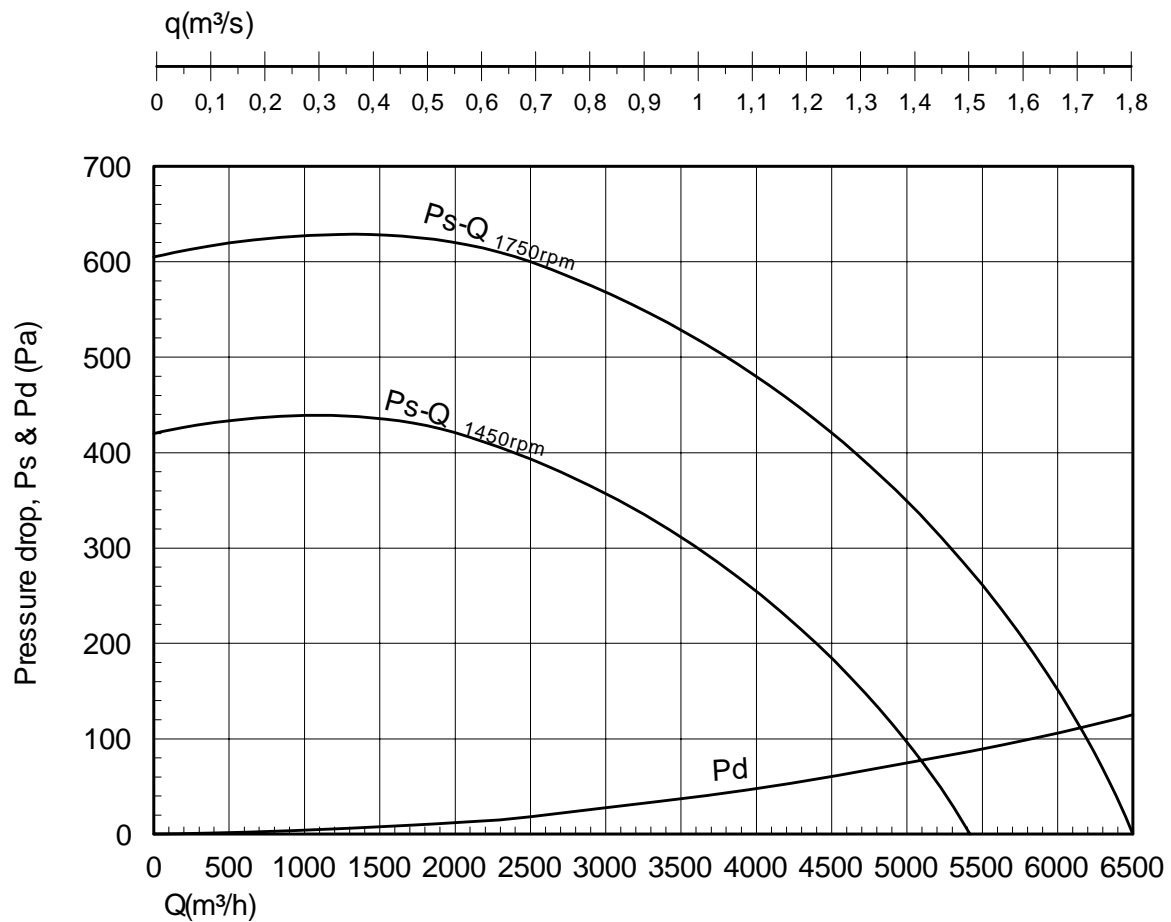
NYBORG AS
N-6230 Sykkylven, Norway
tel.: +47 70 25 40 80
fax: +47 70 25 29 08
office@nyborgfan.com
www.nyborgfan.com

SUV 350 B



CENTRIFUGAL EXHAUST FAN PERFORMANCE DATA

SUV 400 B
Imp: 400x105



Nyborg17.prs/5



NYBORG - MAWENT

NYBORG-MAWENT S.A.
ul. Ciepła 6, 82-200 Malbork
tel.: +48 55 646 63 00
fax: +48 55 646 63 09
office@nyborg-mawent.com
www.nyborg-mawent.com



NYBORG AS
N-6230 Sykkylven, Norway
tel.: +47 70 25 40 80
fax: +47 70 25 29 08
office@nyborgfan.com
www.nyborgfan.com

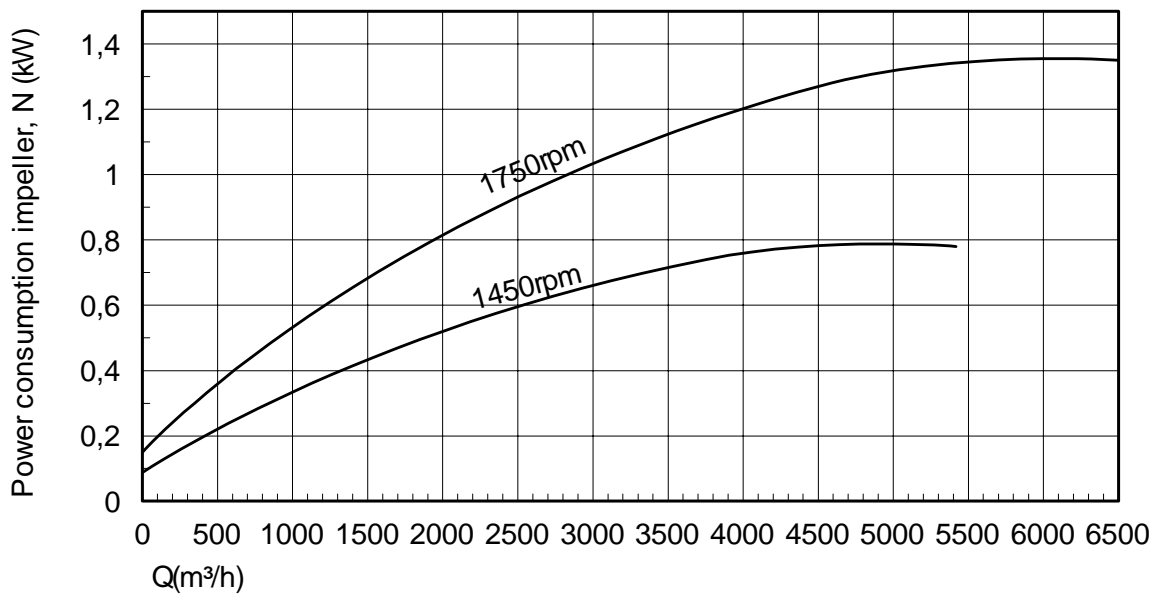
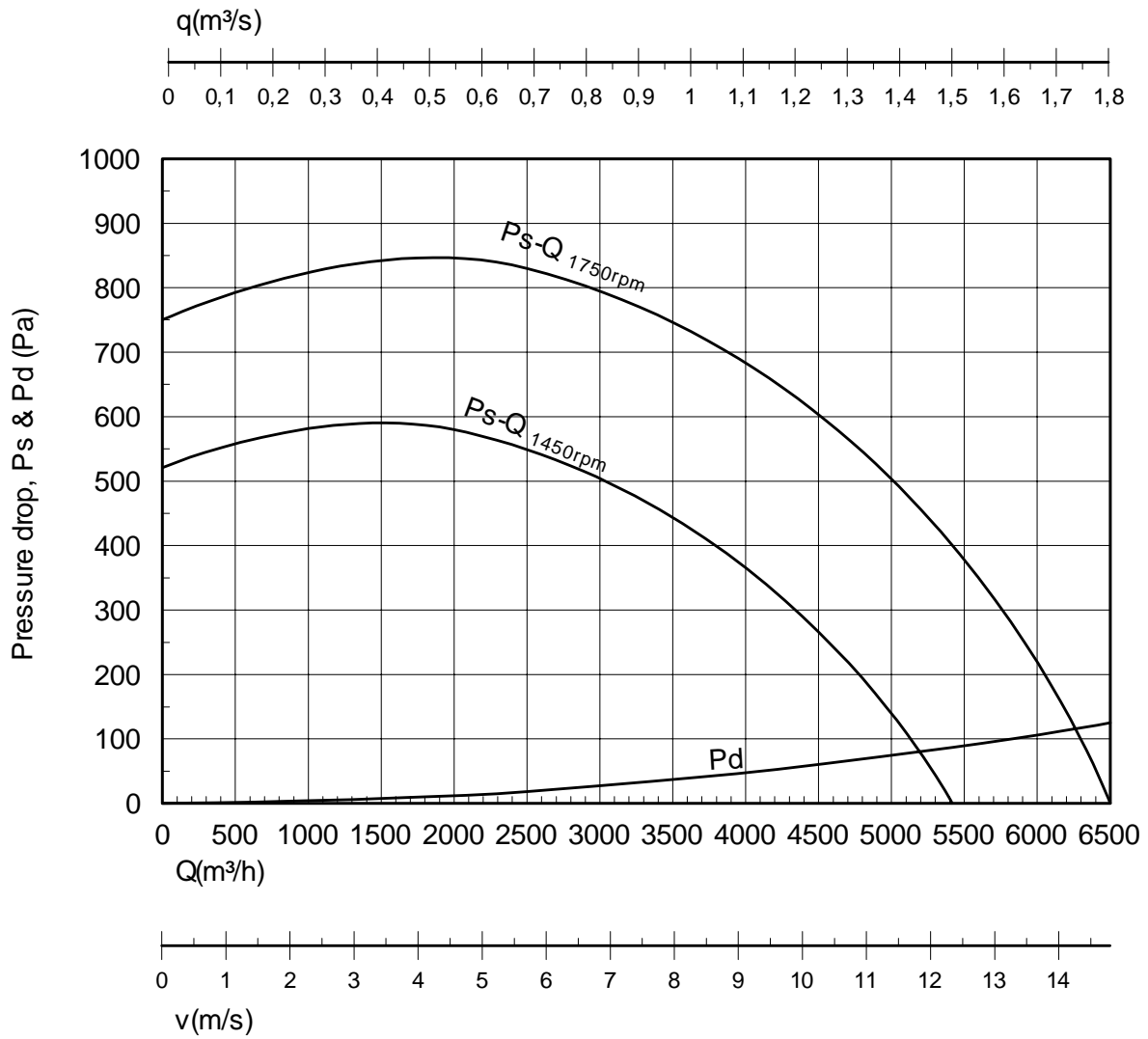
SUV 400 B



CENTRIFUGAL EXHAUST FAN PERFORMANCE DATA

SUV 400 Z

Imp: Z12x400x105



Nyborg17.prs/6



NYBORG - MAWENT

NYBORG-MAWENT S.A.
ul. Ciepła 6, 82-200 Malbork
tel.: +48 55 646 63 00
fax: +48 55 646 63 09
office@nyborg-mawent.com
www.nyborg-mawent.com



NYBORG AS
N-6230 Sykkylven, Norway
tel.: +47 70 25 40 80
fax: +47 70 25 29 08
office@nyborgfan.com
www.nyborgfan.com

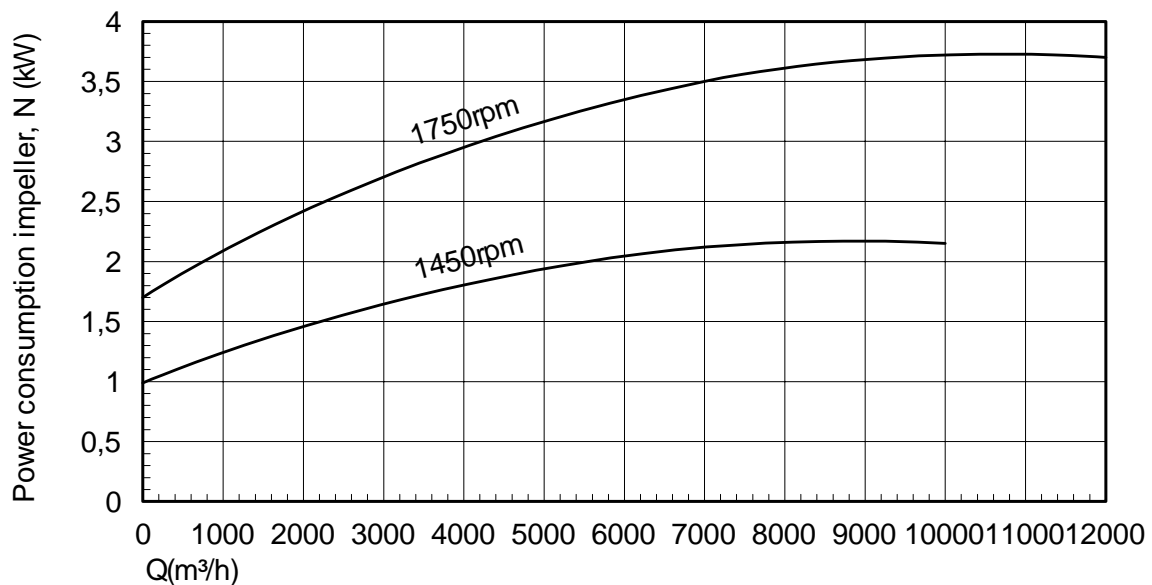
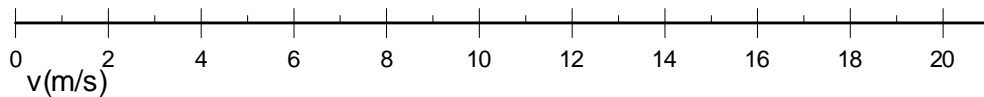
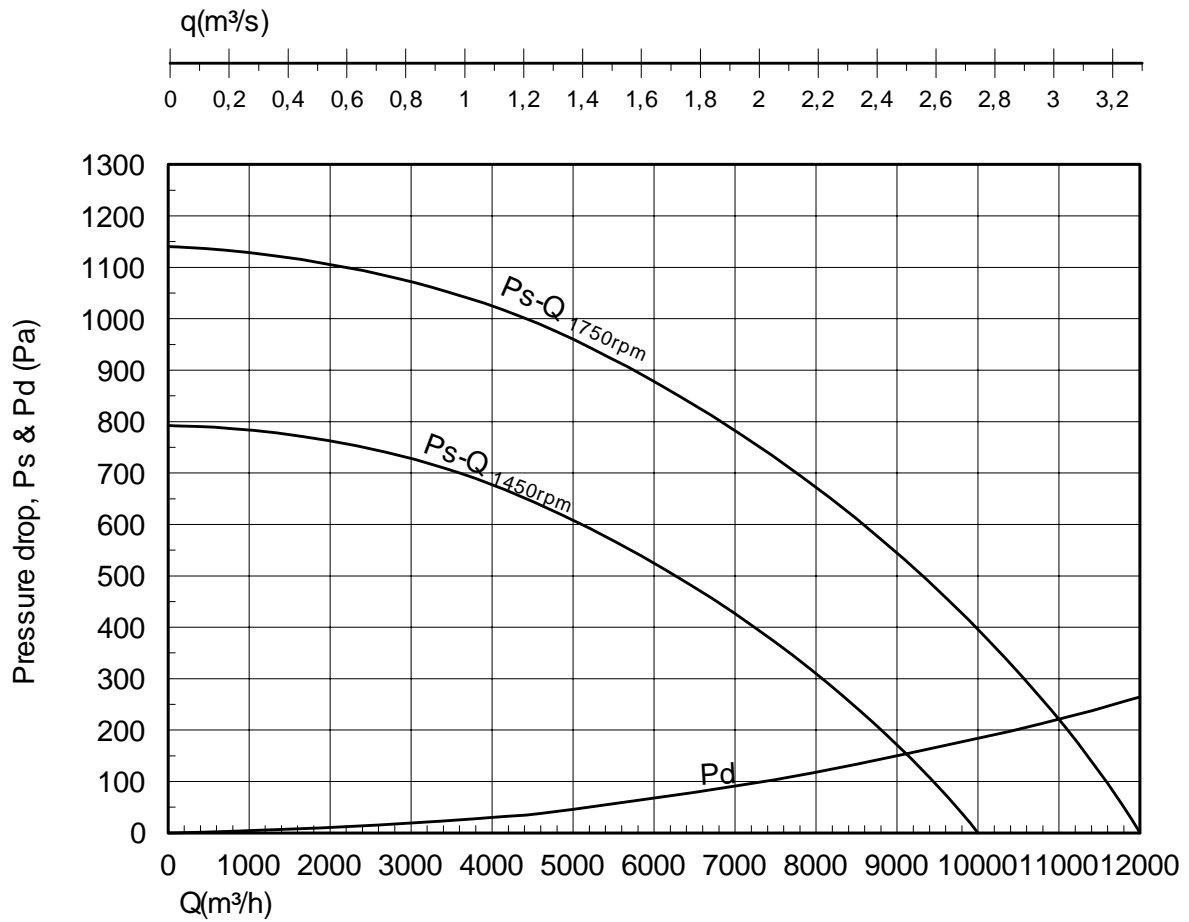
SUV 400 Z



CENTRIFUGAL EXHAUST FAN PERFORMANCE DATA

SUV 450 Z

Imp: Z12x450x105



Nyborg17.prs/7



NYBORG - MAWENT

NYBORG-MAWENT S.A.
ul. Ciepła 6, 82-200 Malbork
tel.: +48 55 646 63 00
fax: +48 55 646 63 09
office@nyborg-mawent.com
www.nyborg-mawent.com



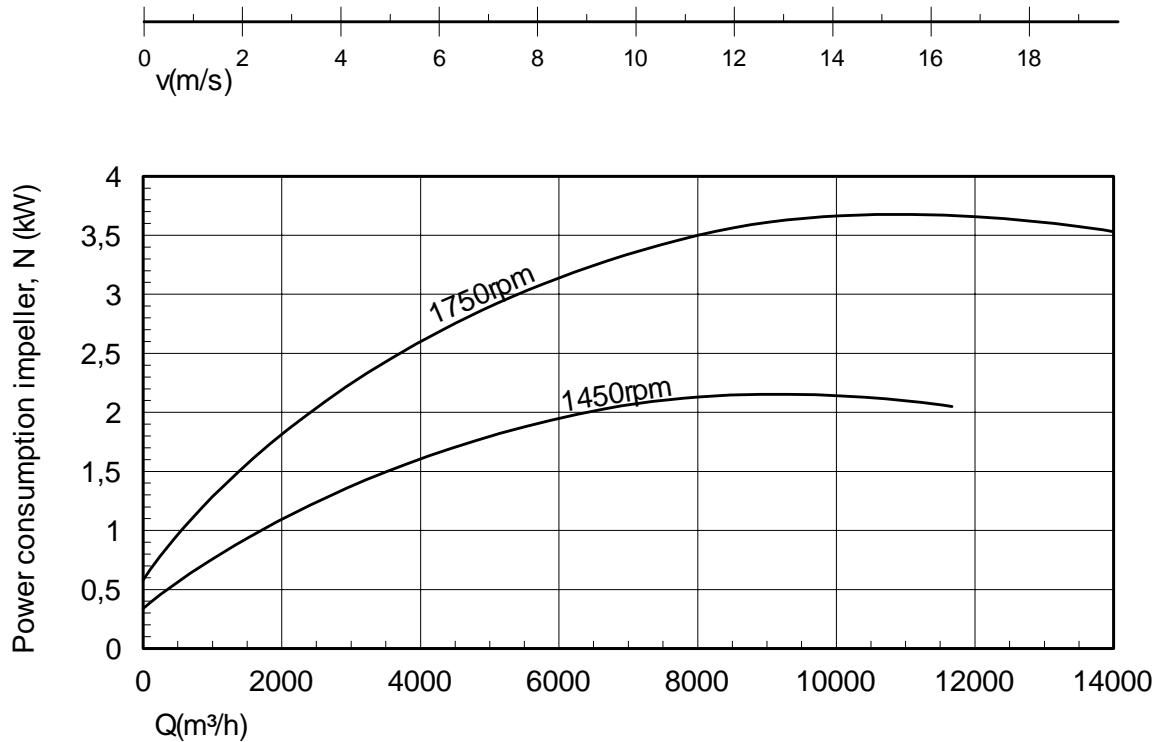
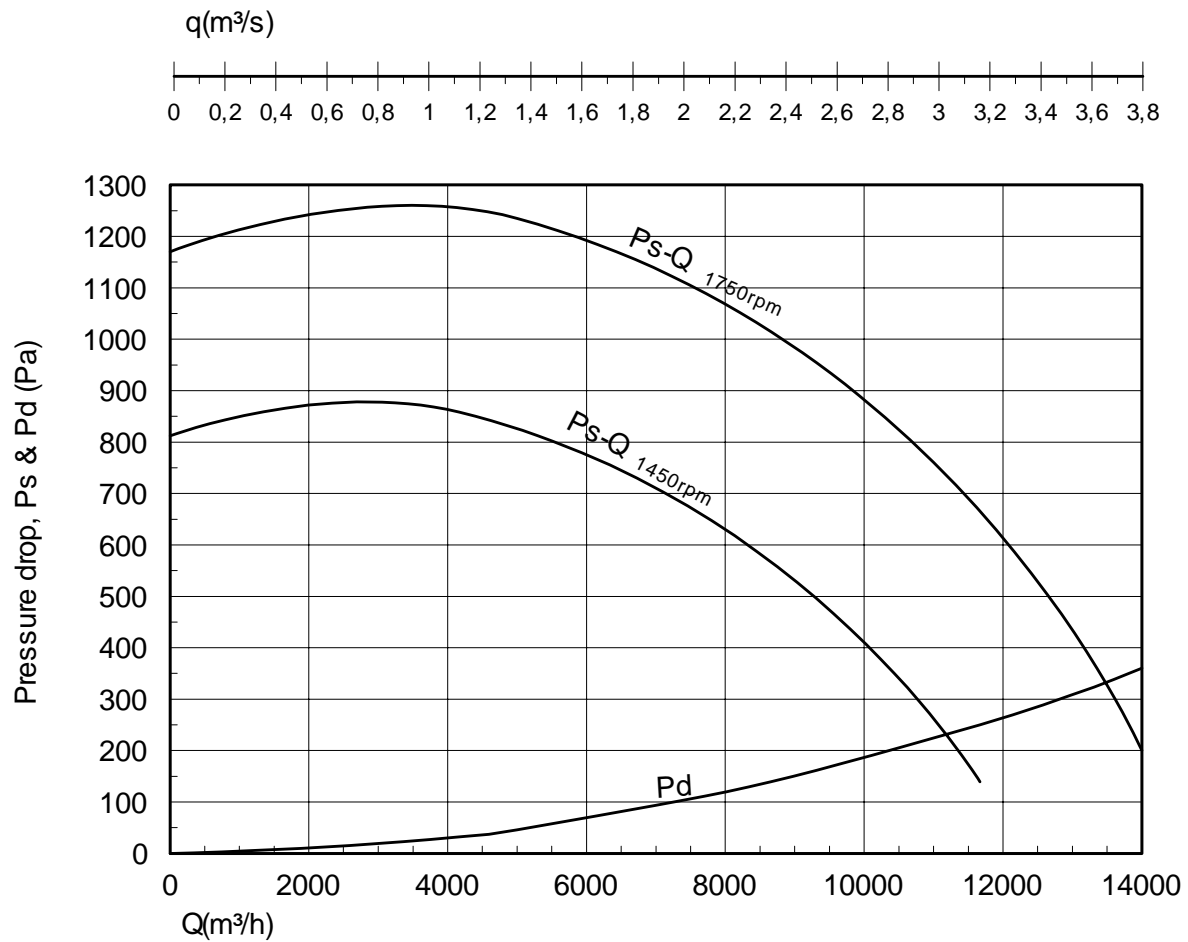
NYBORG AS
N-6230 Sykkylven, Norway
tel.: +47 70 25 40 80
fax: +47 70 25 29 08
office@nyborgfan.com
www.nyborgfan.com

SUV 450 Z



CENTRIFUGAL EXHAUST FAN PERFORMANCE DATA

SUV 500 B
Imp: B6x600x122



Nyborg17.prs/9



NYBORG - MAWENT

NYBORG-MAWENT S.A.
ul. Ciepła 6, 82-200 Malbork
tel.: +48 55 646 63 00
fax: +48 55 646 63 09
office@nyborg-mawent.com
www.nyborg-mawent.com



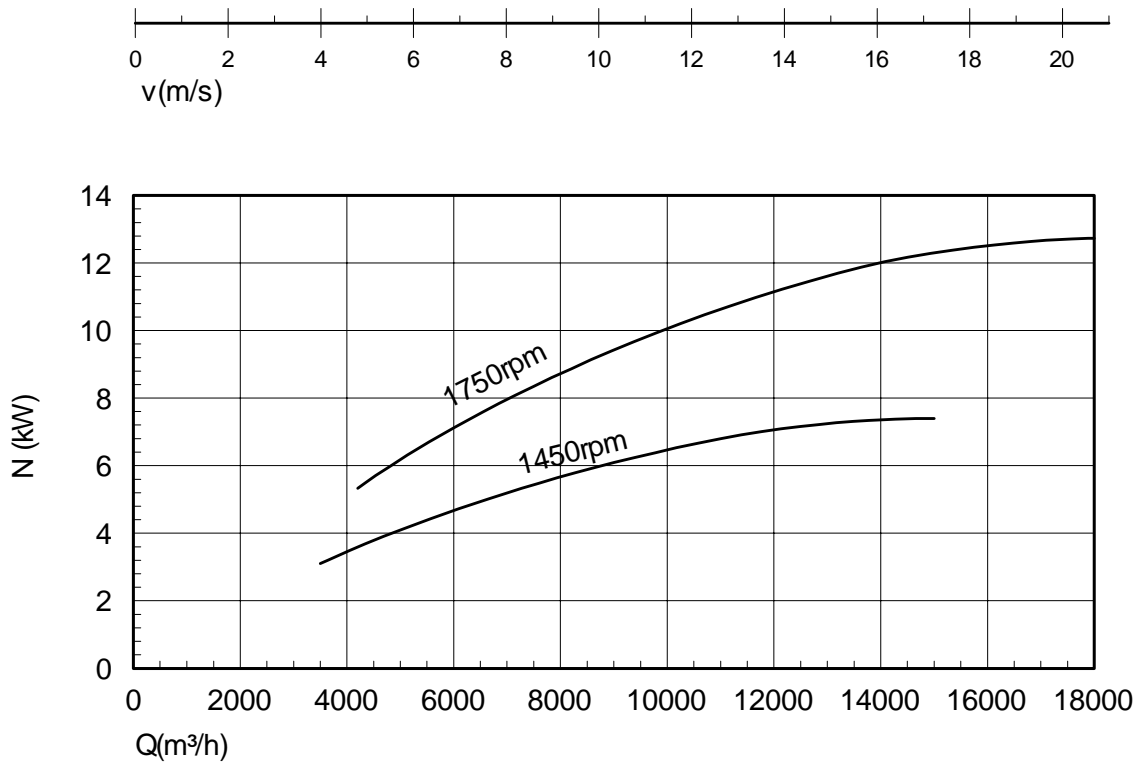
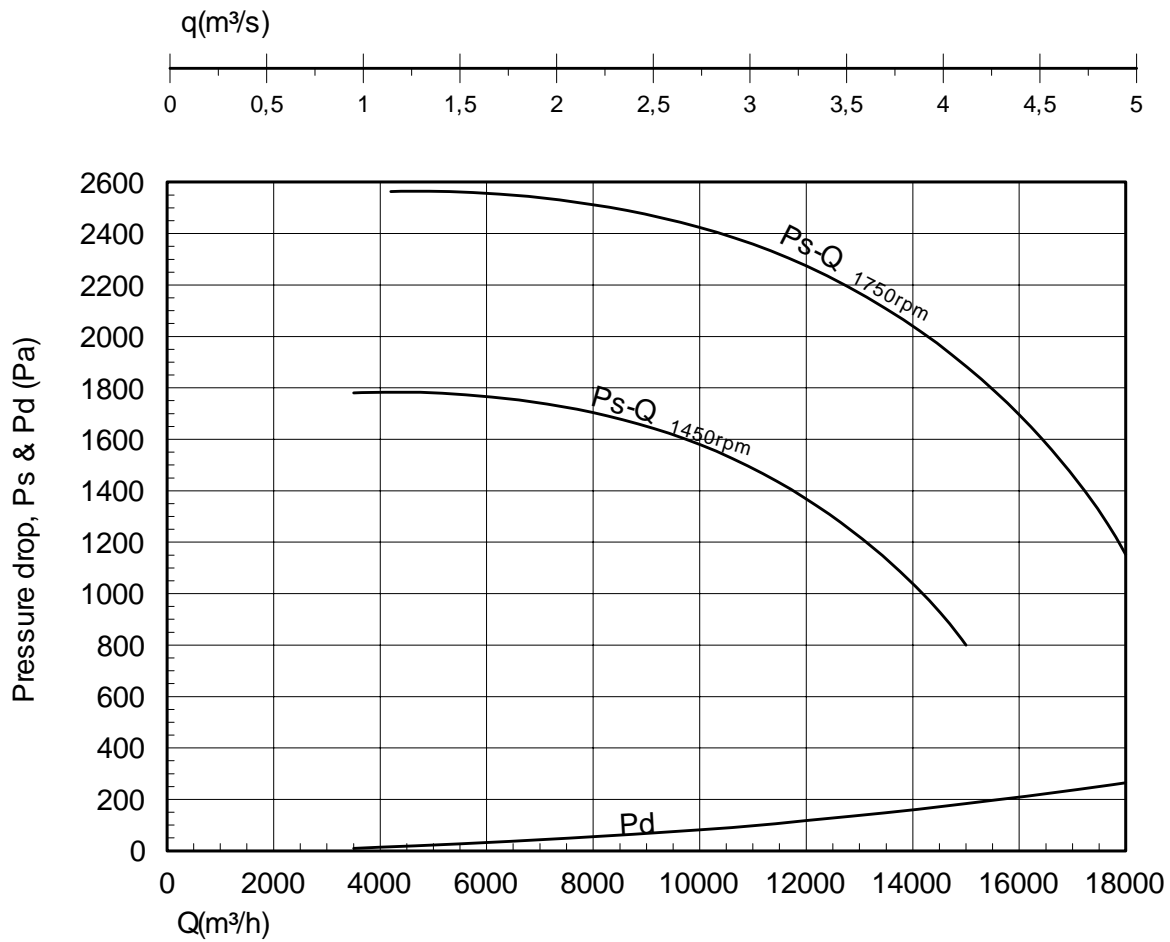
NYBORG AS
N-6230 Sykkylven, Norway
tel.: +47 70 25 40 80
fax: +47 70 25 29 08
office@nyborgfan.com
www.nyborgfan.com

SUV 500 B



CENTRIFUGAL EXHAUST FAN PERFORMANCE DATA

SUV 550 Z
Imp: 615x100



Nyborg17.prs/10



NYBORG - MAWENT

NYBORG-MAWENT S.A.
ul. Ciepła 6, 82-200 Malbork
tel.: +48 55 646 63 00
fax: +48 55 646 63 09
office@nyborg-mawent.com
www.nyborg-mawent.com



NYBORG AS
N-6230 Sykkylven, Norway
tel.: +47 70 25 40 80
fax: +47 70 25 29 08
office@nyborgfan.com
www.nyborgfan.com

SUV 550 Z