



NYBORG-MAWENT S.A.
Ciepła Street 6, 82-200 Malbork, Poland
Phone +48 (55) 272 33 71, fax +48 (55) 272 33 76 e-mail: office@nyborg-mawent.com
www.nyborg-mawent.com

COMMERCIAL-TECHNICAL INFORMATION No A4-30

ONE-SIDE DUCT AXIAL FANS TYPE: WOS-25 AND WOS-31,5

One-side duct axial fans WOS-25 and WOS-31,5 are designed to force neutral agent of temperature not exceeding 318 K (+40°C) and maximal dustiness not higher than 0,3 g/m³.

The fans work in horizontal position with terminal box on the top of motor's casing - N (supply) or - W (exhaust).

Casing of fan is made with one flange on el. motor side to connect fan to duct. The casing is made of common steel. There is mesh on inlet. Impeller is made of aluminium and put direct on shaft of motor. The fans work with three-phase foot-type el. motors IM B3.

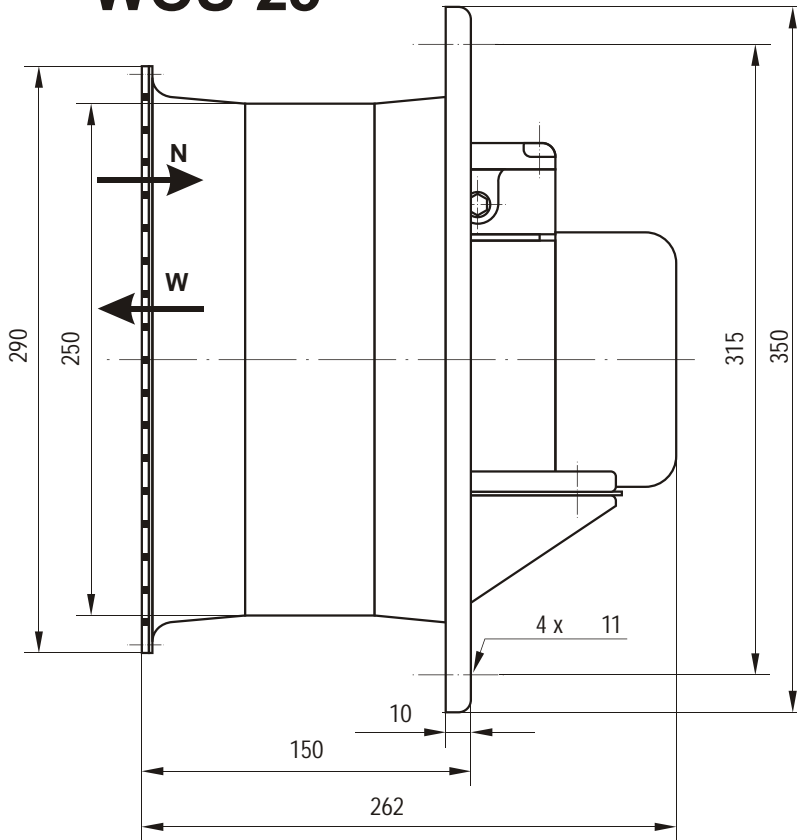
Anticorrosion protection:

- standard execution- general assignment paint
- special execution – hot deep galvanise
- other acc. to client's requirement

CHARACTERYSTICS

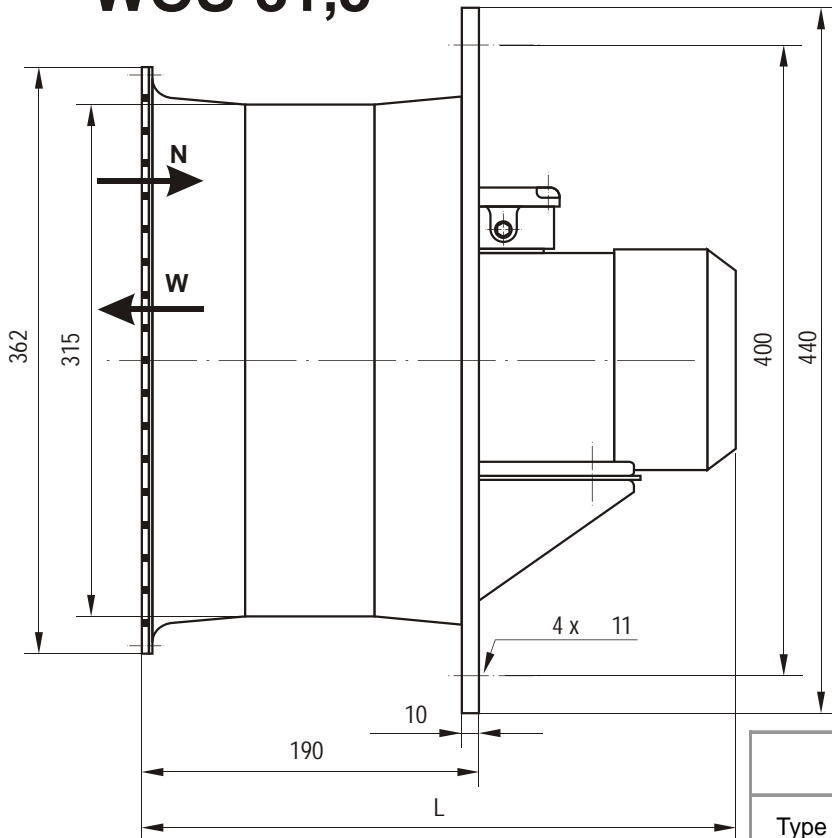
Flow characteristics presents total pressure against capacity for each size of fan, different angle position of blades (for the agent density: 1,2 kg/m³ and correct rotational speed). On characteristics there is a point of maximal efficiency with noise level L_{A0}.

WOS-25



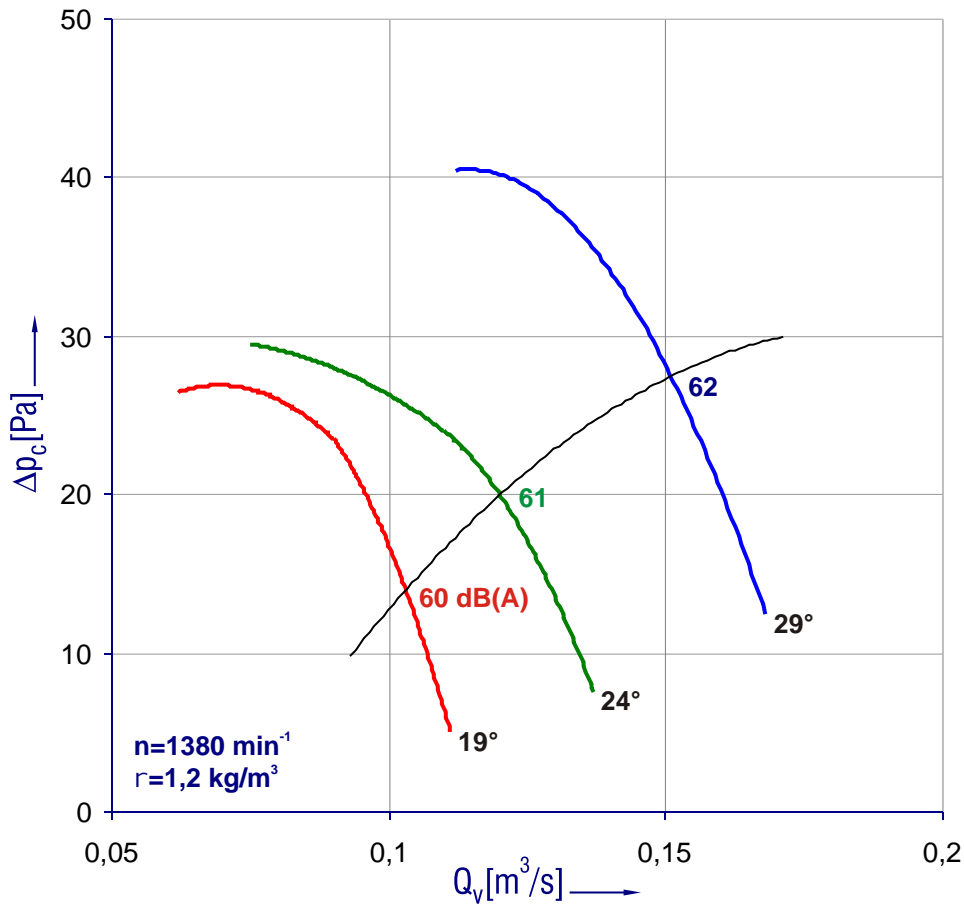
Motor				Weight of fan without motor [kg]
Type	Power [kW]	rpm	Weight [kg]	
Sf63-2A	0,18	2780	3,7	9
Sf63-4A	0,12	1390		

WOS-31,5

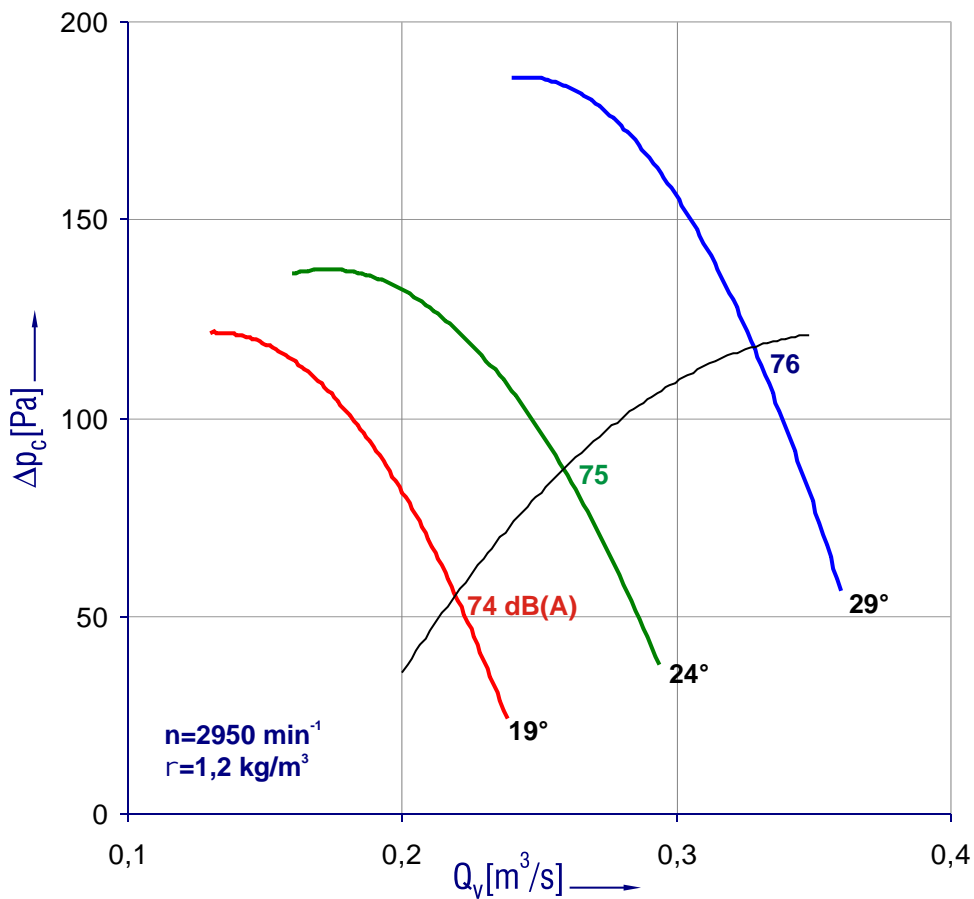


Motor				L mm	Weight of fan without motor [kg]
Type	Power [kW]	rpm	Weight [kg]		
Sf63-4B	0,18	1380	4,3	315	13
Sf71-2B	0,55	2790	6,2	335	15,2
Sf80-2A	0,75	2760	7,9	355	17
Sf80-2B	1,1	2780	9,4	370	18,5

WOS-25

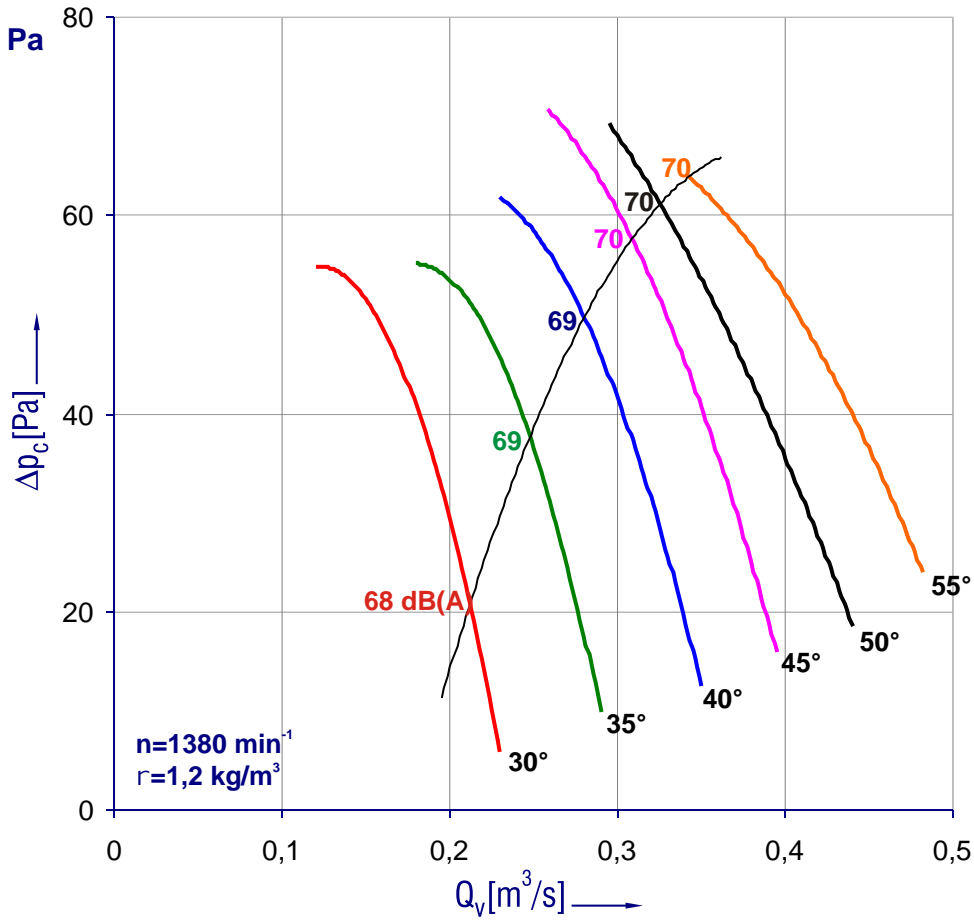


Motor	
Type:	Sf63-4A
Power [kW]:	0,12
Rev. speed:	1390 rpm

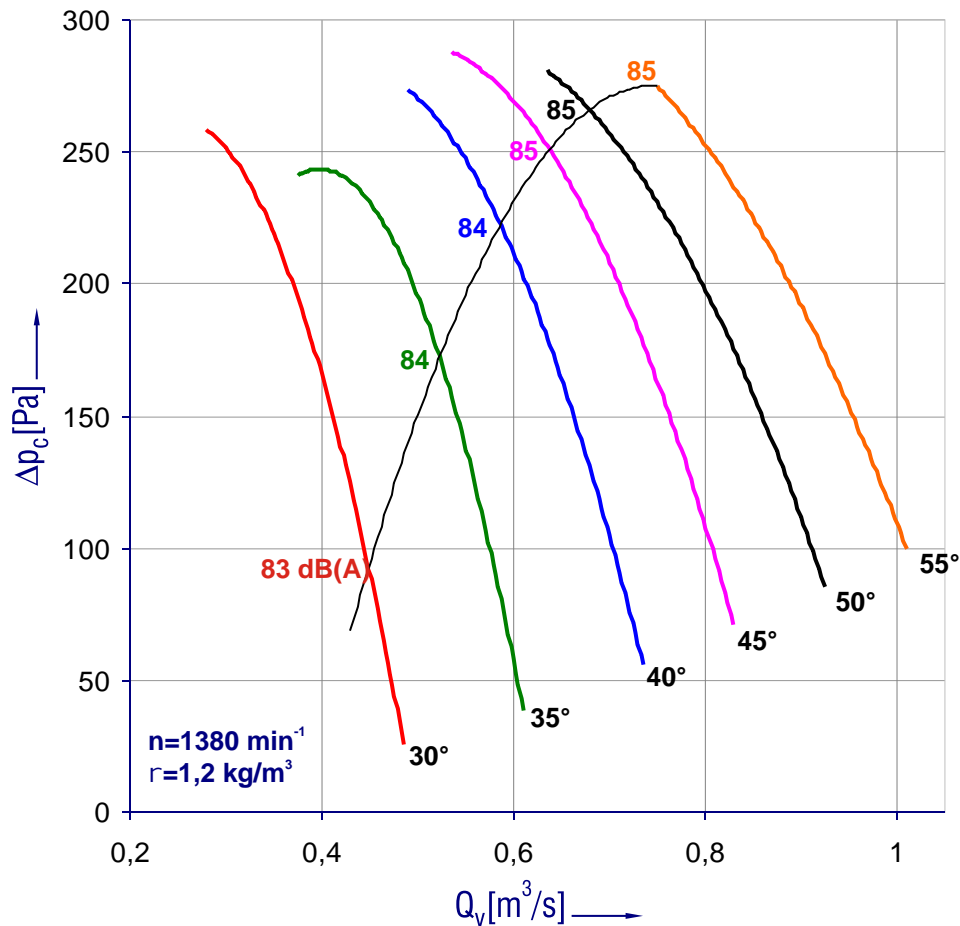


Motor	
Type:	Sf63-2A
Power [kW]:	0,18
Rev. speed:	2780 rpm

WOS-31,5



Motor	
Type:	Sf63-4B
Power:	0,18
Rev. speed:	1380 min^{-1}



Motor	
Angle of impeller:	30°; 35°; 40°
Type:	Sg71-2B
Power:	0,55
Rev. speed:	2790 min^{-1}

Motor	
Angle of impeller:	45°; 50°
Type:	Sg80-2A
Power:	0,75
Rev. speed:	2760 min^{-1}

Motor	
Angle of impeller:	55°
Type:	Sg80-2B
Power:	1,1
Rev. speed:	2780 min^{-1}