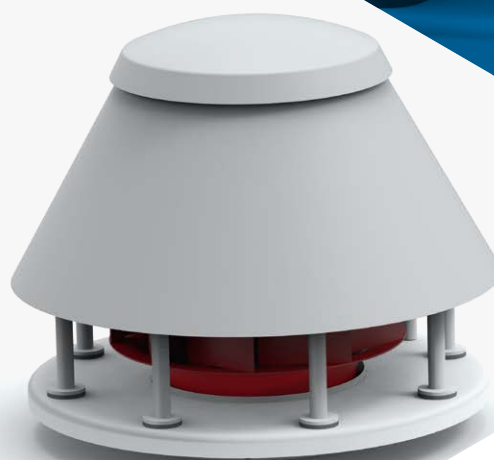




NYBORG - MAWENT



CENTRIFUGAL FANS WD

Nyborg-Mawent S.A.
ul. Ciepła 6, 82-200 Malbork, Poland

tel: +48 55 646 63 00
fax: +48 55 646 63 09
www.nyborg-mawent.com
office@nyborg-mawent.com



APPLICATION:

Roof fans WD are intended for air and other inert gas and steams exhaustion from industry and residential spaces whose construction allows for their vertical installation on the roof. Allowable dust content – 0,1g/m³

CONSTRUCTION:

In standard execution the fan's housing, cylindrical shaped with a flange is made of standard steel of ordinary quality. Impellers are mostly steel or aluminium. In order to improve the air flow onto impeller the inlet cone is used.

DRIVE:

- Direct drive (1) – up to 40°C

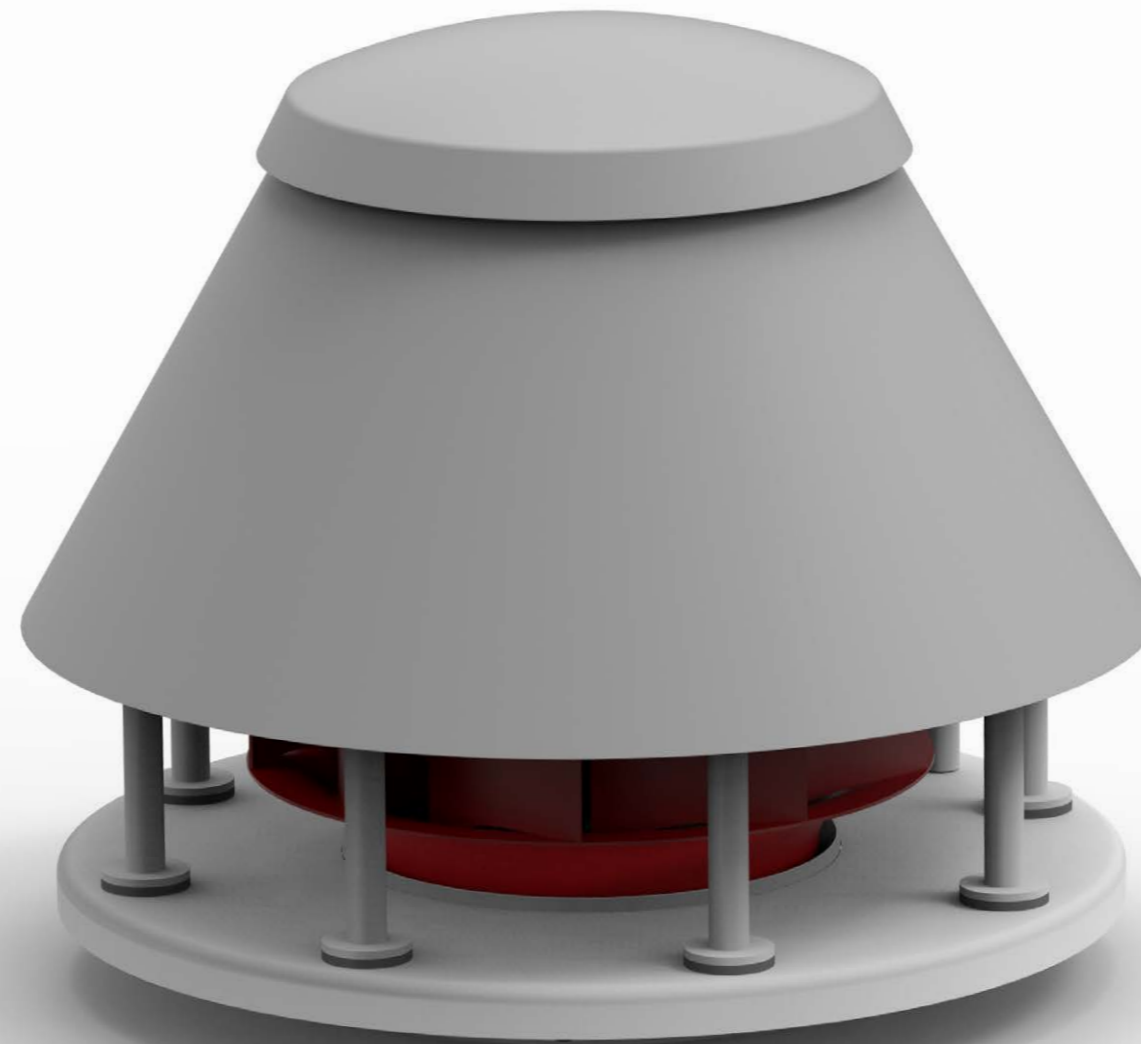
PROTECTION AGAINST CORROSION:

- Standard executions - painting with standard set of paints, C3 class, RAL 5009,
- special execution

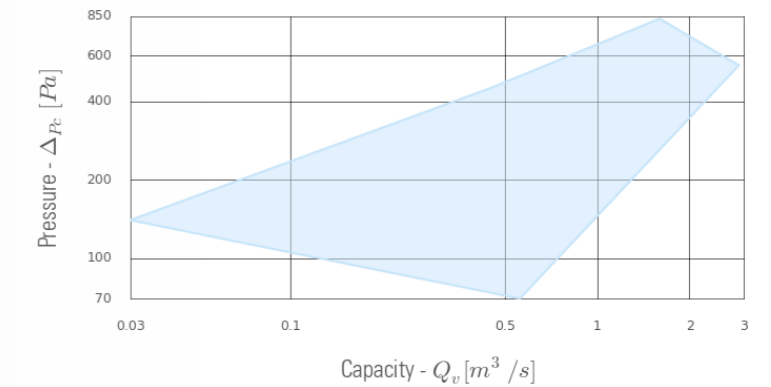
MOTOR:

In standard the fans are driven by flange-mounted, three-phase, inductive, squirrel cage electric motors seated in coned casing of galvanized steel covered with a cap. Motors in IP55 execution, insulation class F, from world-renown producers.

Motors for special execution available on Client's demand.



WORKING FIELD OF THE FAN:



ATEX:

The explosion-proof fans are meant for operation in potentially explosive areas according to ATEX 94/9/WE directive.

Available executions:

- Zones 2 and 1 for gases (3G/2G)
- Zones 22 and 21 for dusts (3D/2D)

MOUNTING POSITIONS:

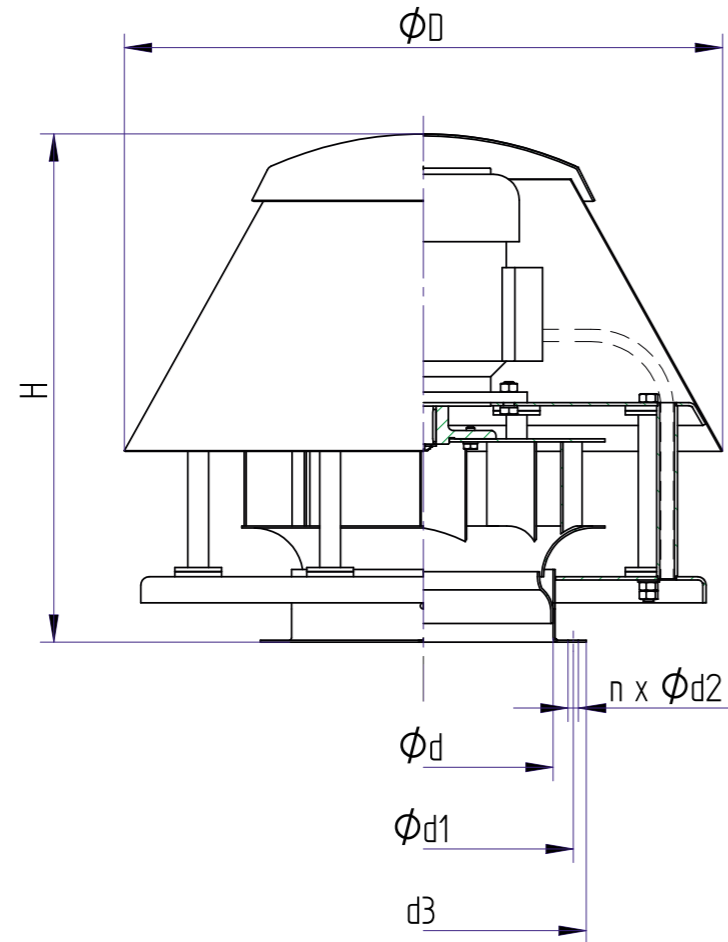
Each size of the type is intended for vertical mounting position.

ACCESSORIES:

Available accessories used for our fans are included in Fan's Accessories Catalogue.

Due to constant improvement of our products we reserve the possibility of design changes which will increase their advantages and safety. Given dimensions are visual, we reserve the possibility of changes.

TECHNICAL DATA

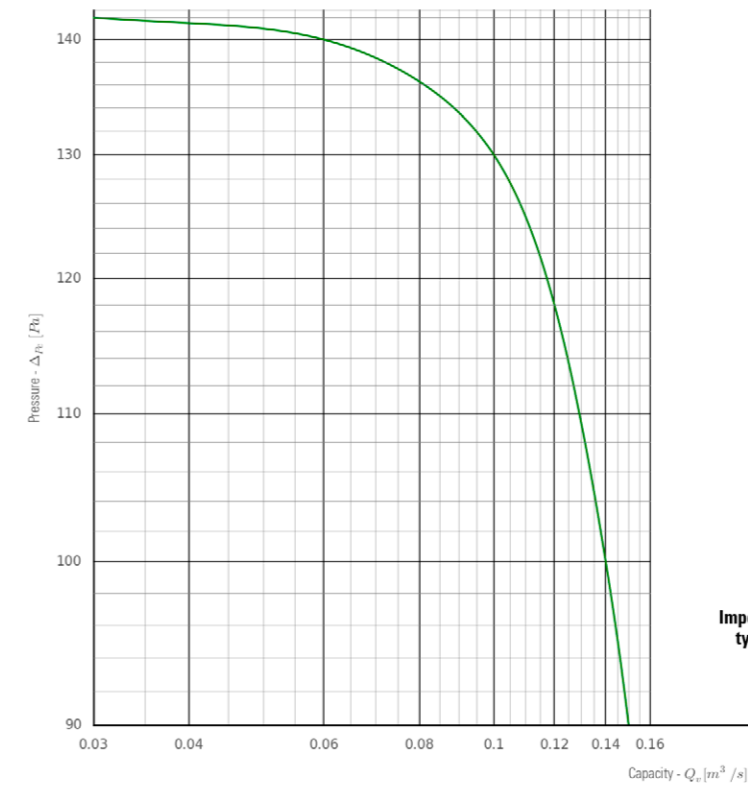


Visual drawing. We reserve the right to implement changes.

FAN TYPE WD 16-40

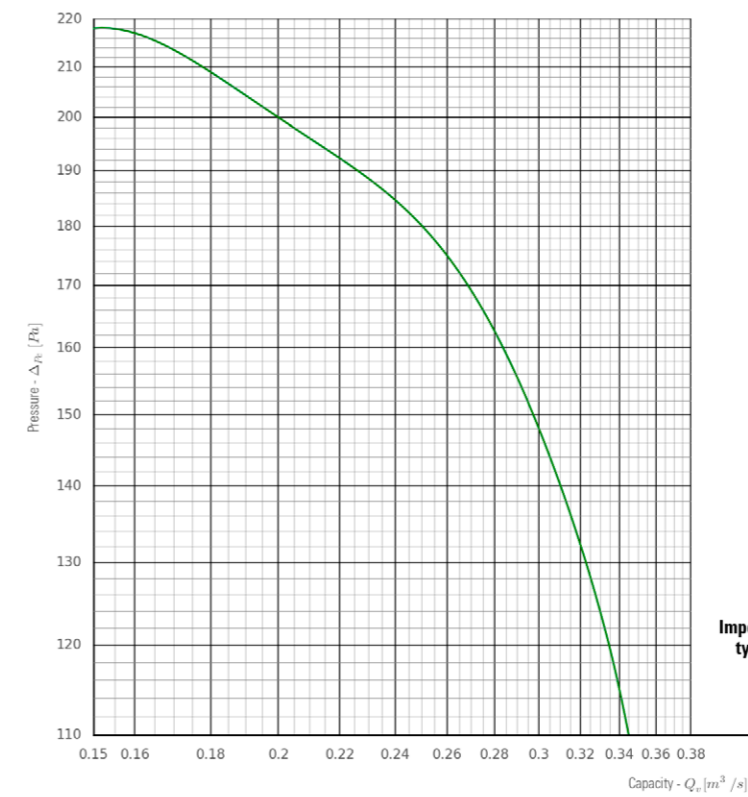
Fan type	Motor power	D	H	d	d1	d2	d3	n	Fan weight
	[kW]								[mm]
WD-16	0,12	450	350	160	192	10	225	8	22,8
WD-20	0,12	450	390	200	239	10	264	8	24,1
WD-25	0,37	580	490	250	289	10	314	8	39
	0,55								43
WD-31,5	0,18	580	518	315	361	12	394	8	41,5
	0,55								48,1
	0,75								54,1
WD-40	0,37	830	660	400	446	12	484	12	77,5
	0,75								86,3
	2,2								109

FLOW CHARACTERISTICS



WD-16

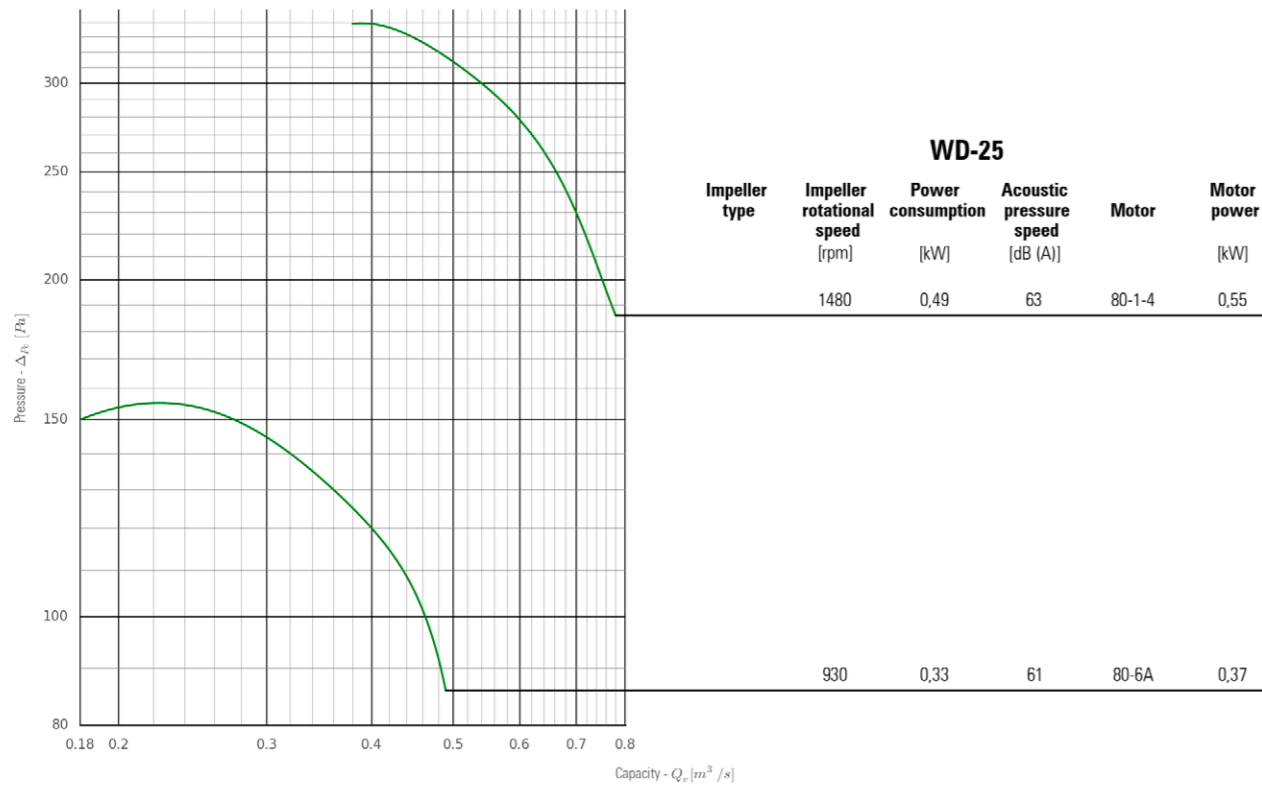
Impeller type	Impeller rotational speed [rpm]	Power consumption [kW]	Acoustic pressure speed [dB (A)]	Motor	Motor power [kW]
	1485	0,10	59	63-1-4	0,12



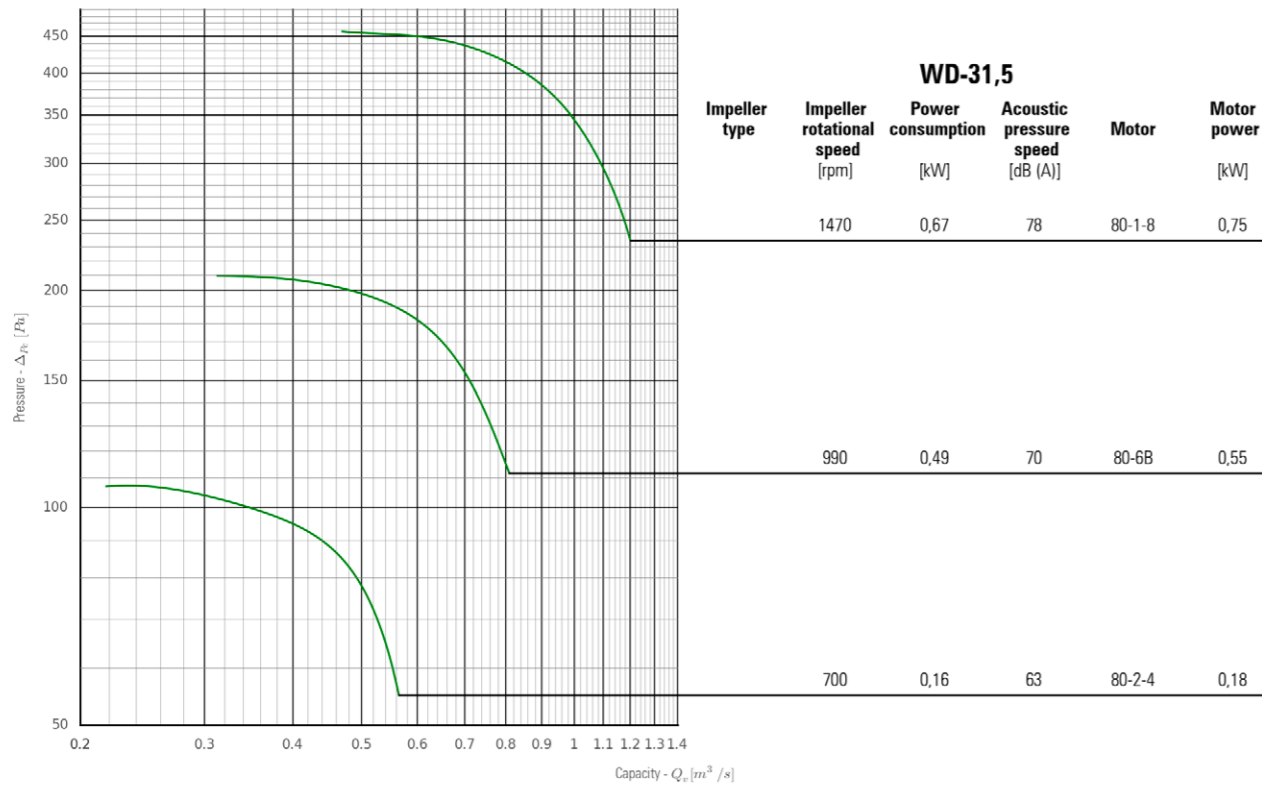
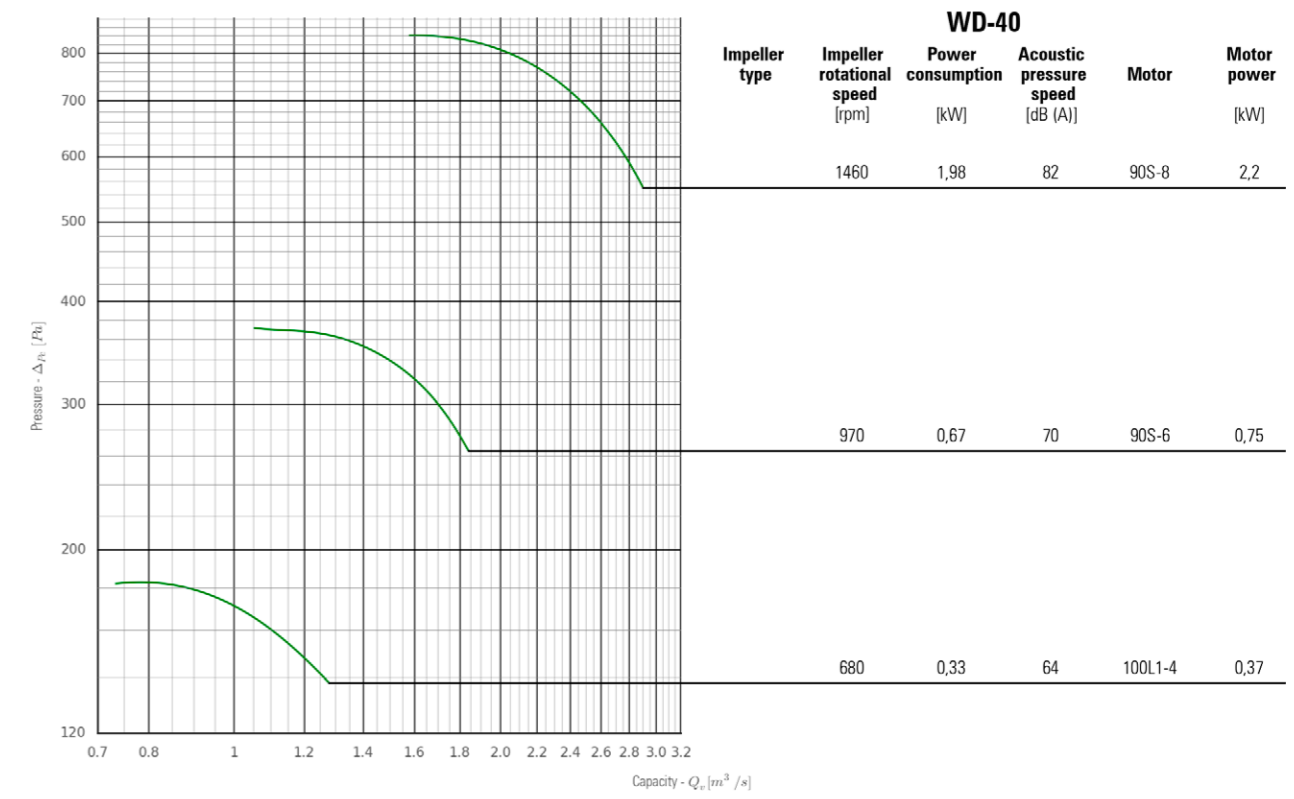
WD-20

Impeller type	Impeller rotational speed [rpm]	Power consumption [kW]	Acoustic pressure speed [dB (A)]	Motor	Motor power [kW]
	1460	0,10	64	63-1-4	0,12

FLOW CHARACTERISTICS



FLOW CHARACTERISTICS



NYBORG - MAWENT

The image features a 3D rendering of industrial machinery components, likely part of a pump or turbine assembly. The components are shown in various colors: orange, grey, white, and blue. The orange part is a large, curved, conical structure on the left. The grey part is a smaller, curved structure below it. The white part is a large, cylindrical structure in the center. The blue part is a large, curved, conical structure on the right. The background is white.

Nyborg-Mawent S.A.
ul. Ciepła 6, 82-200 Malbork, Poland

tel: +48 55 646 63 00
fax: +48 55 646 63 09
www.nyborg-mawent.com
office@nyborg-mawent.com